

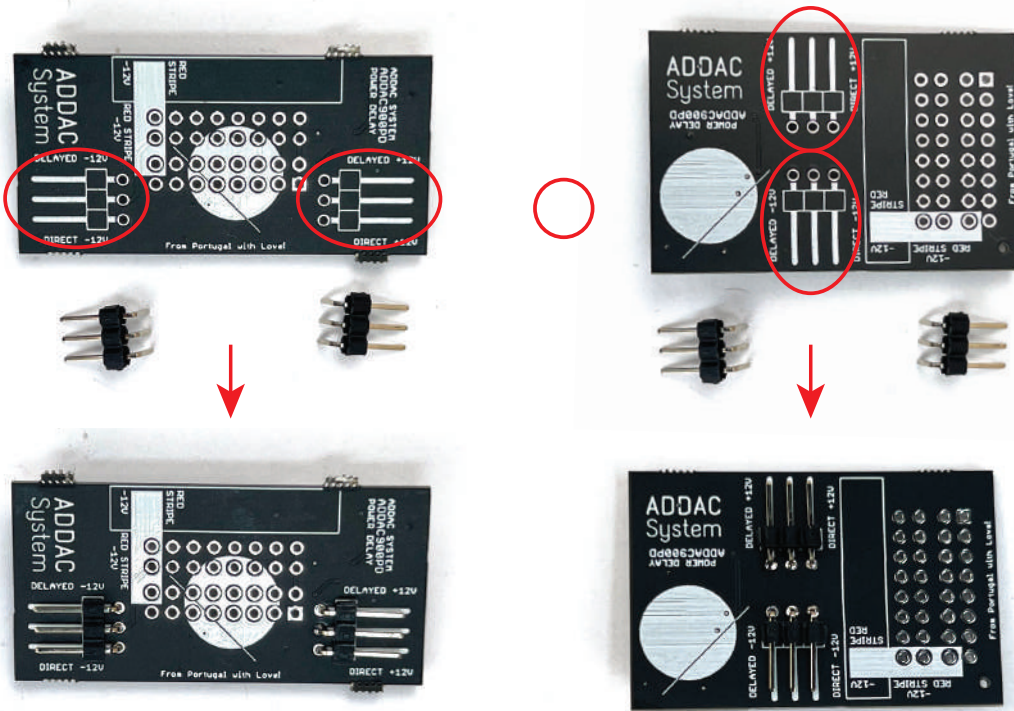
## ADDAC900PD POWER DELAYS ASSEMBLY GUIDE

Revision.01 February.2023

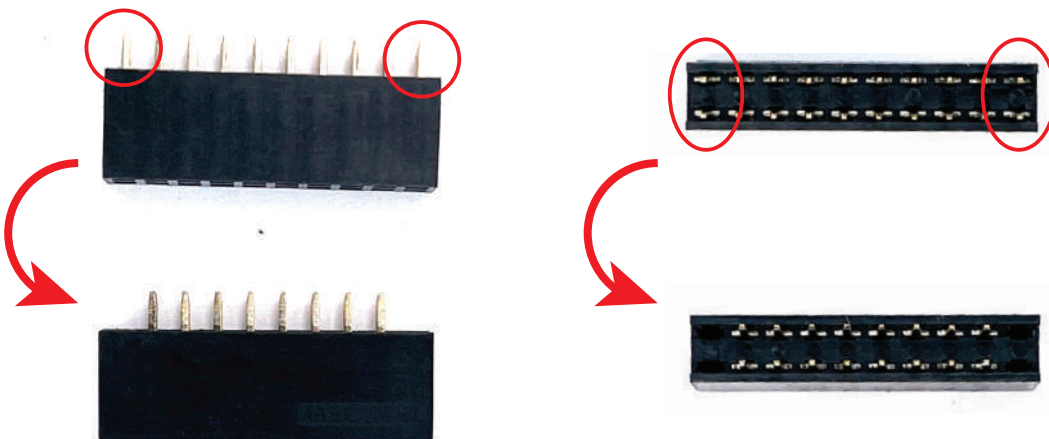


## ADDAC900PD Assembly Guide

STEP 1:  
Start by placing and solder the 90 degree 1x3 pinheaders

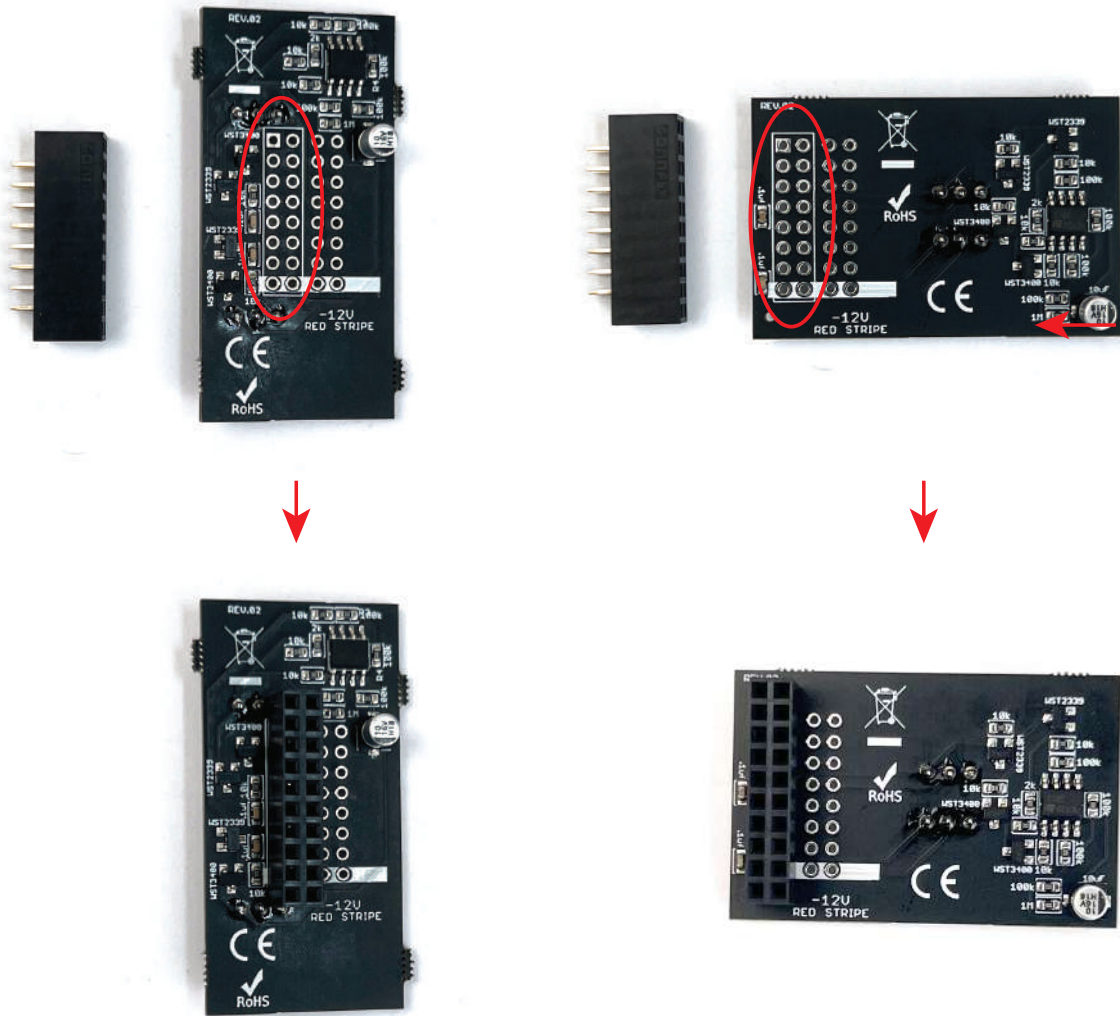


STEP 2:  
Locate the 2x10 pinheader and using pliers pull the 4 legs at both edges like shown below. As we use Boxed Headers in all our Busboards the extra length of this connector will prevent an offsetted connection that could cause a short circuit in the psu.



## ADDAC900PD Assembly Guide

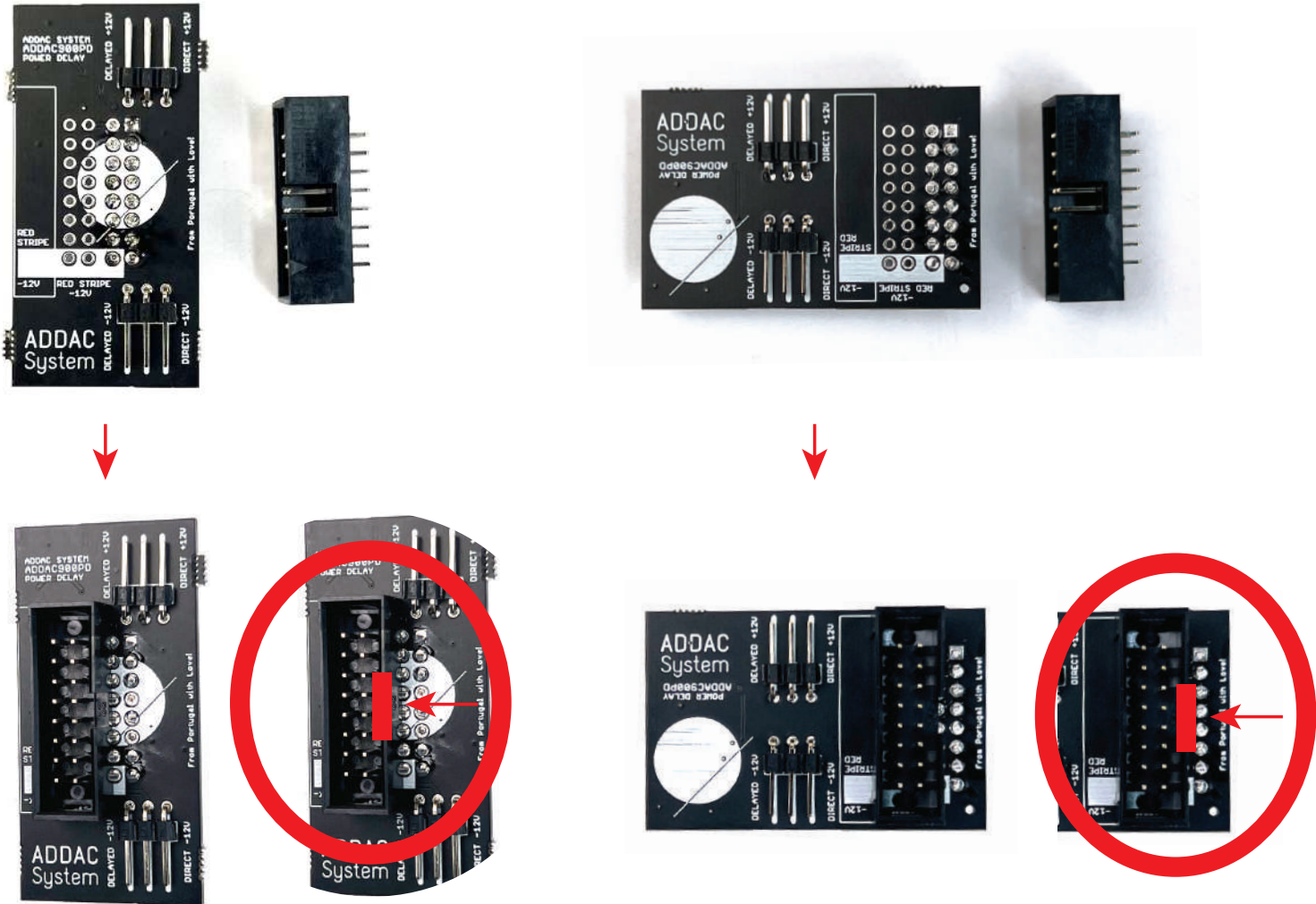
STEP 3:  
Place and solder the 2x8 modified pinheader.



# ADDAC900PD Assembly Guide

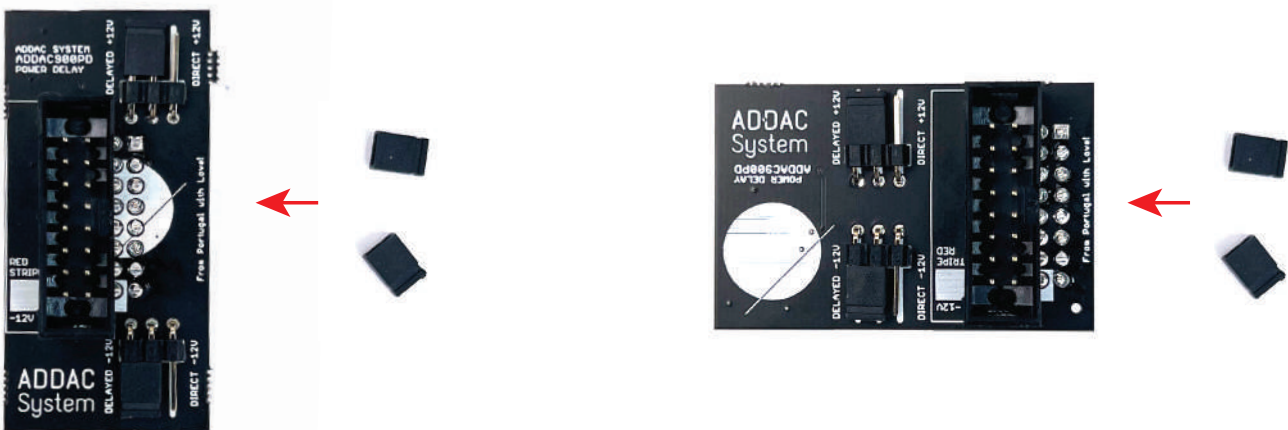
## STEP 4:

Place and solder the 2x8 boxed pinheader like shown below, notice the indent orientation.

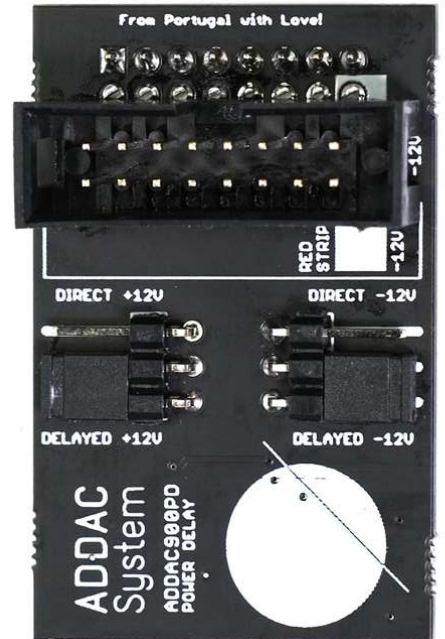
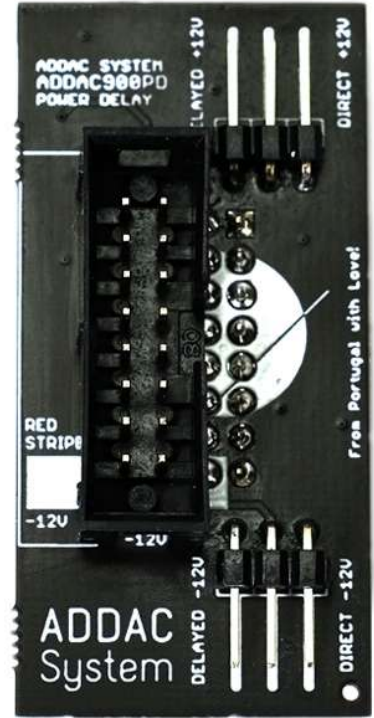


## STEP 5:

Finish by placing the jumpers as you please.



You're all done!  
Happy patching!



For feedback, comments or problems please contact us at:  
[addac@addacsystem.com](mailto:addac@addacsystem.com)