



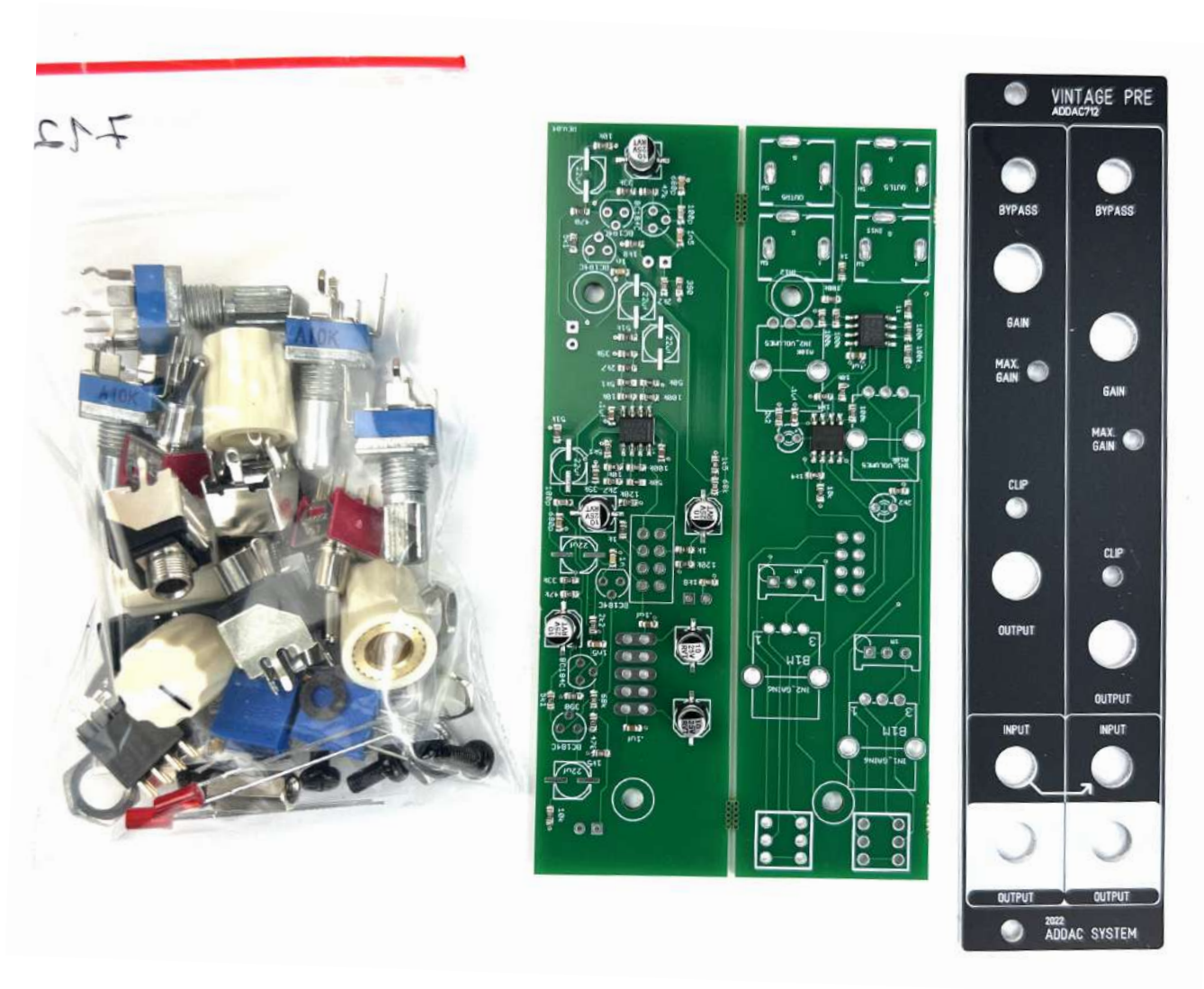
ADDAC712 VINTAGE PRE
ASSEMBLY GUIDE

Revision.01 February,2023

ADDAC System

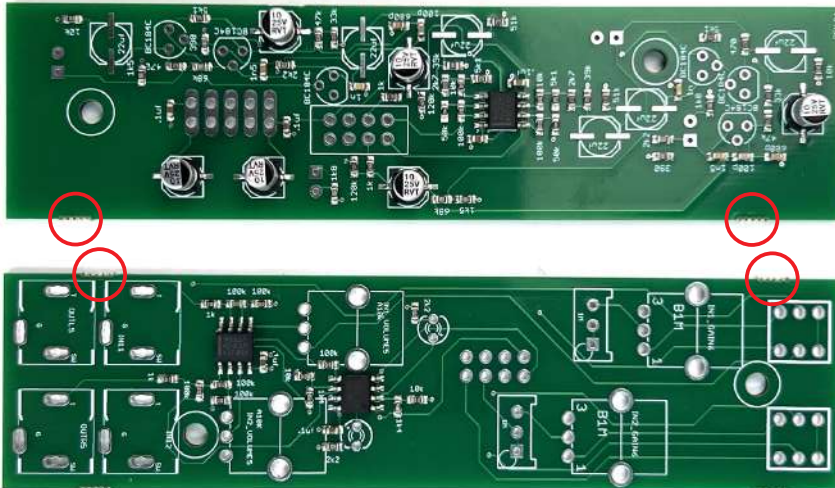
ADDAC712 Assembly Guide

February, 2023



STEP 1:

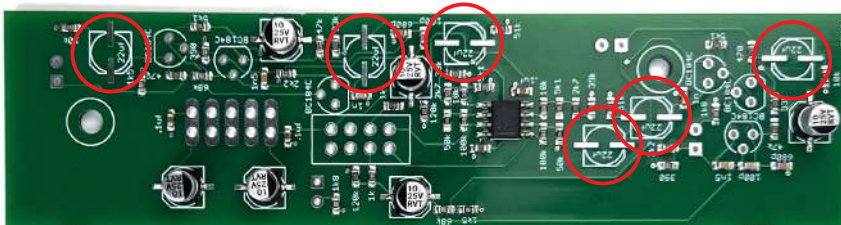
Grab the pcb, gently brake it apart and trim the excess with a cutting plier.



STEP 2:

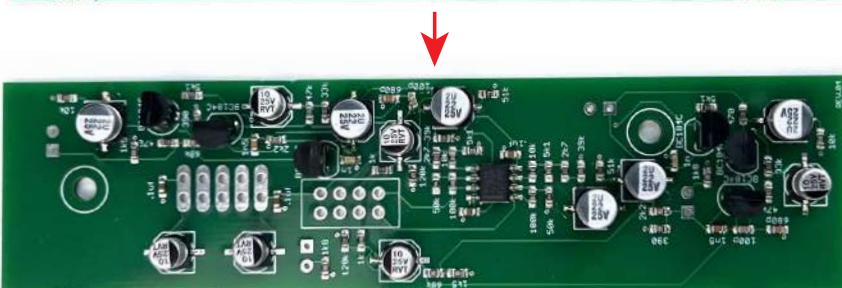
Proceed by locating the six 22uf capacitors, notice the orientation printed on the pcb.

Tip: soldering these caps is easy, just place a dab of solder on the pad on your right (left pad if you're left handed) and then, with the help of a tweezer, put the capacitor in place and reflow the previously tinned pad to melt the solder while pushing the capacitor down. Then solder the other pad.



STEP 3:

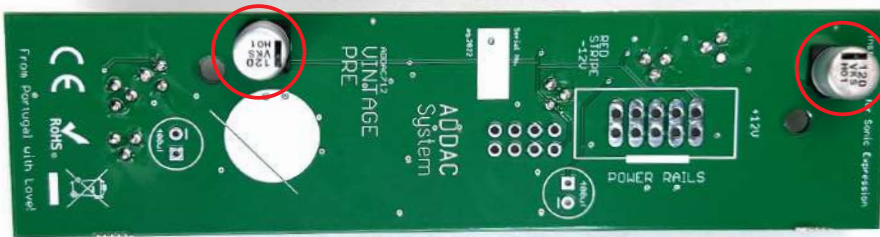
Next place and solder all transistors, then trim the excess legs with a cutting pliers.



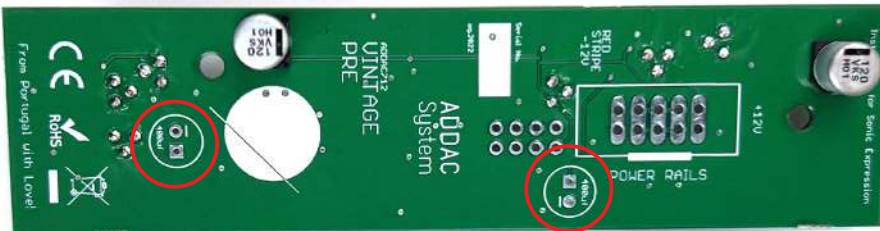
STEP 4:
Locate the two 120uf capacitors, straighten their legs as shown below.



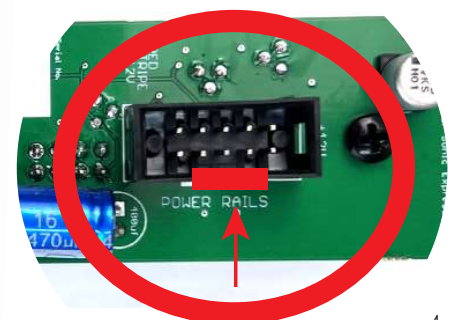
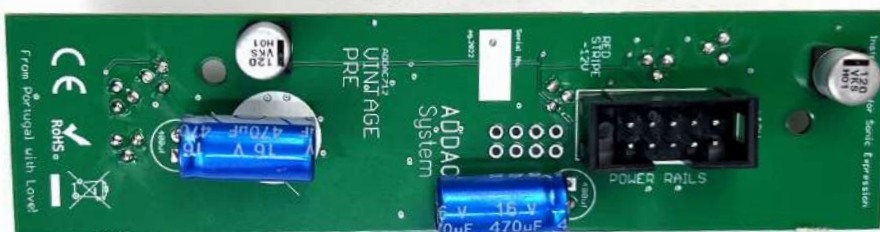
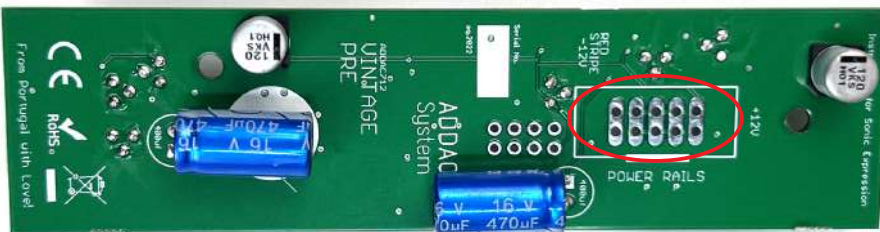
STEP 5:
Notice the capacitors orientation, place their legs through the pcb holes and solder them to the pcb.



STEP 6:
Place and solder the remaining 470uf capacitors. Notice the part polarity orientation.

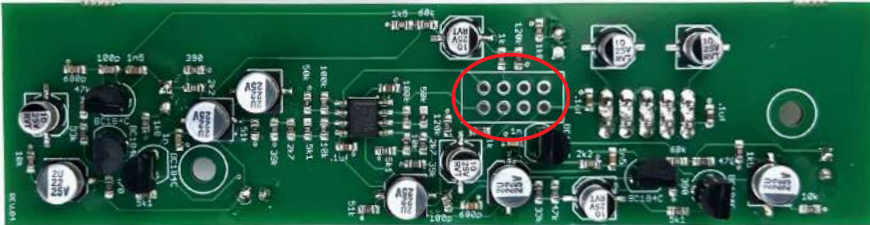


STEP 7:
Place and solder the 2x5 boxed pinheader. Notice the indent orientation.

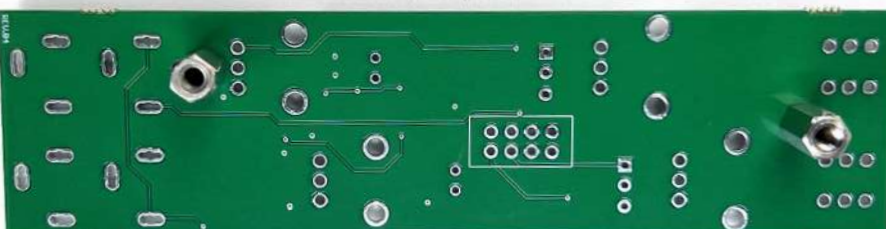


ADDAC712 Assembly Guide

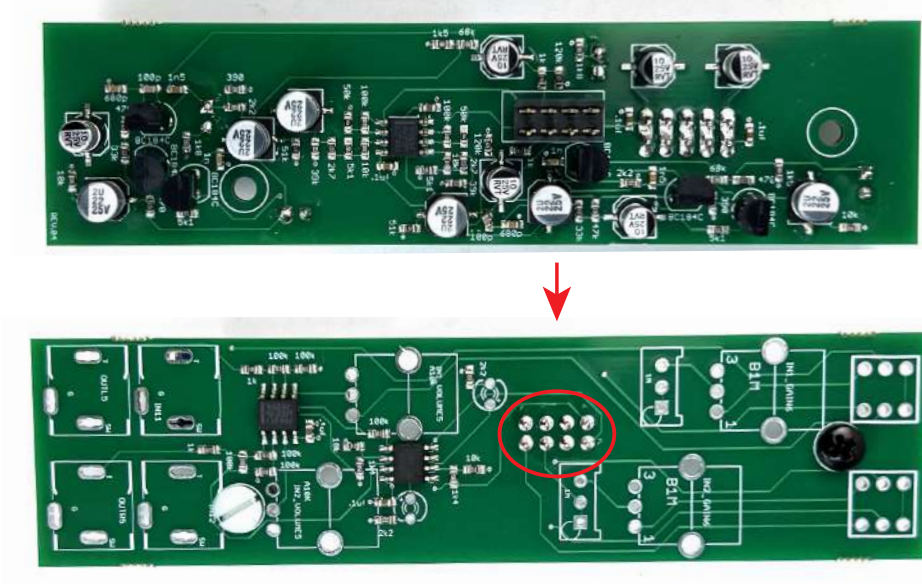
STEP 8:
Place and solder the 2x4 pinheader.



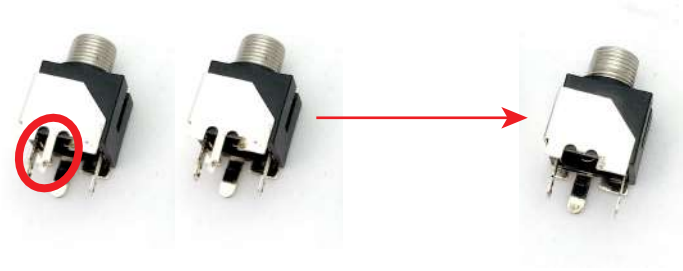
STEP 9:
Attach the spacers to the front pcb as shown below, notice the white plastic screw location.



STEP 10:
Align both pcbs together and solder the pinheader to the top pcb.

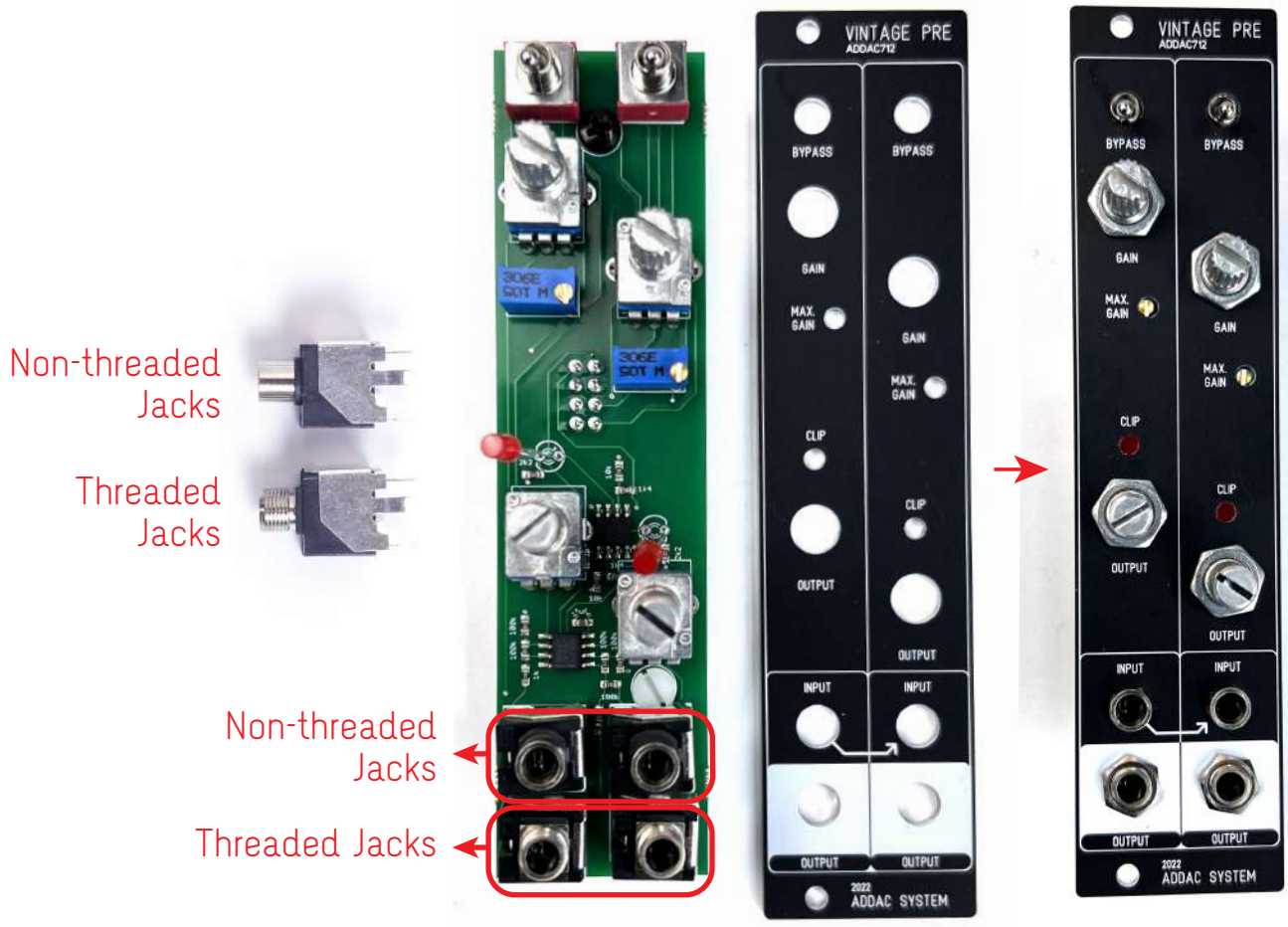


STEP 11:
Next locate the jacks and cut the thinnest leg like shown below.



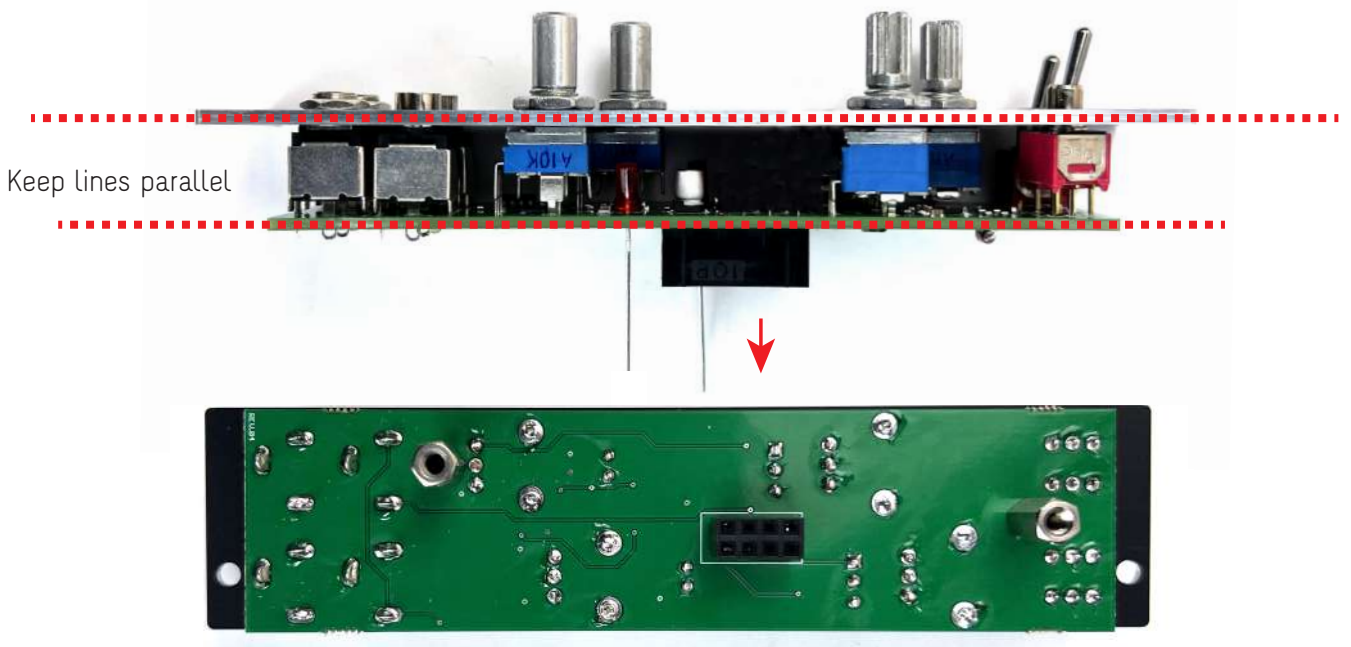
STEP 12:

Place the remaining parts on the pcb, align the front panel and tighten the jacks and pots' nuts.



STEP 13:

Adjust the height of the pcb keeping it parallel to the front panel and proceed to solder all parts.



Finish it by placing the knobs and you've finished the assembly process!

You're all done!

Happy patching!



For feedback, comments or problems please contact us at:
addac@addacsystem.com

STEP 14:

Next attach the bottom pcb and tighten the two bottom screws.

