



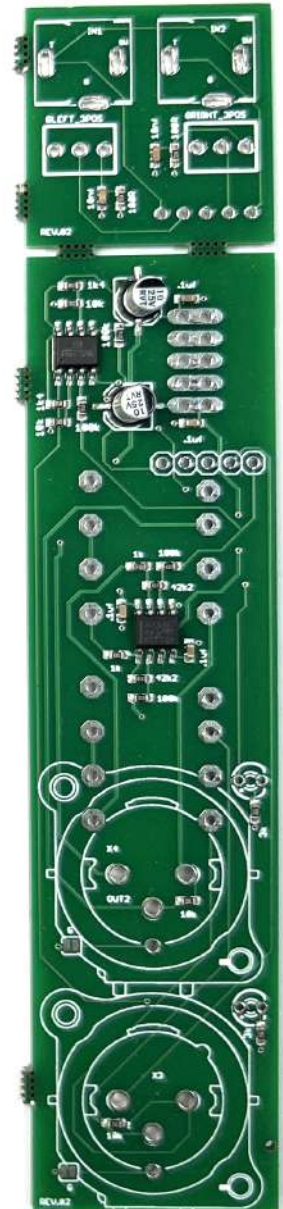
ADDAC710 BALANCED OUTPUTS
ASSEMBLY GUIDE

Revision.01 February.2023

ADDAC System

ADDAC710 Assembly Guide

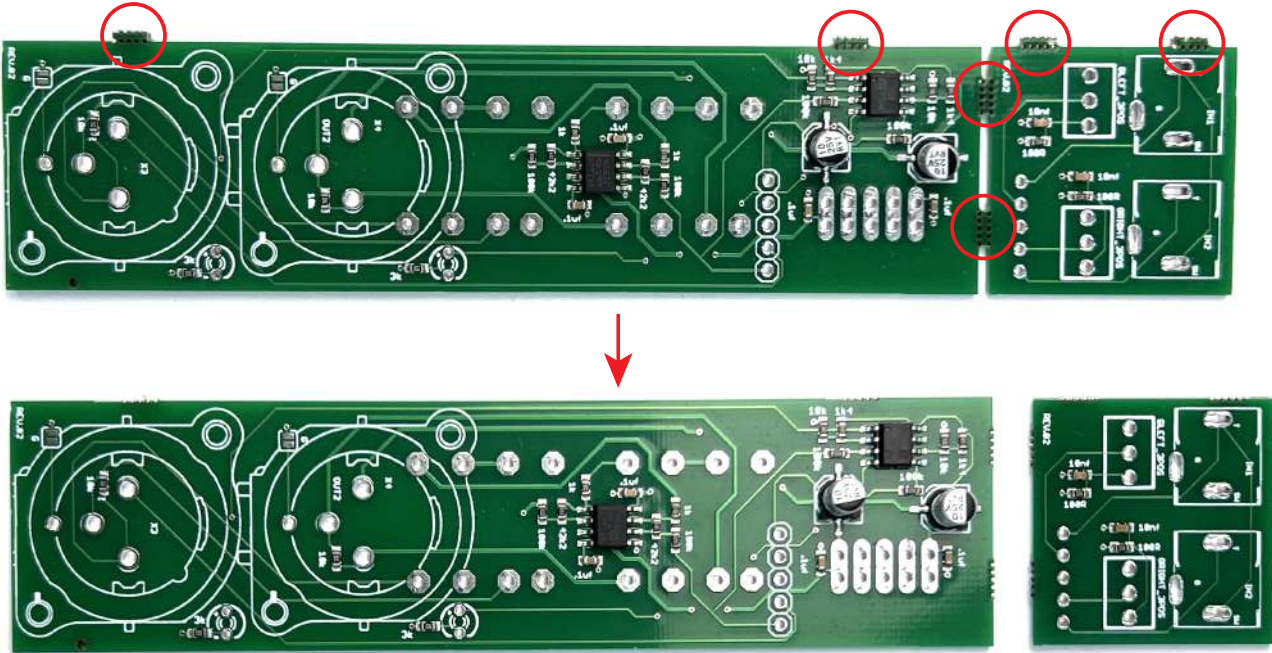
February.2023



ADDAC710 Assembly Guide

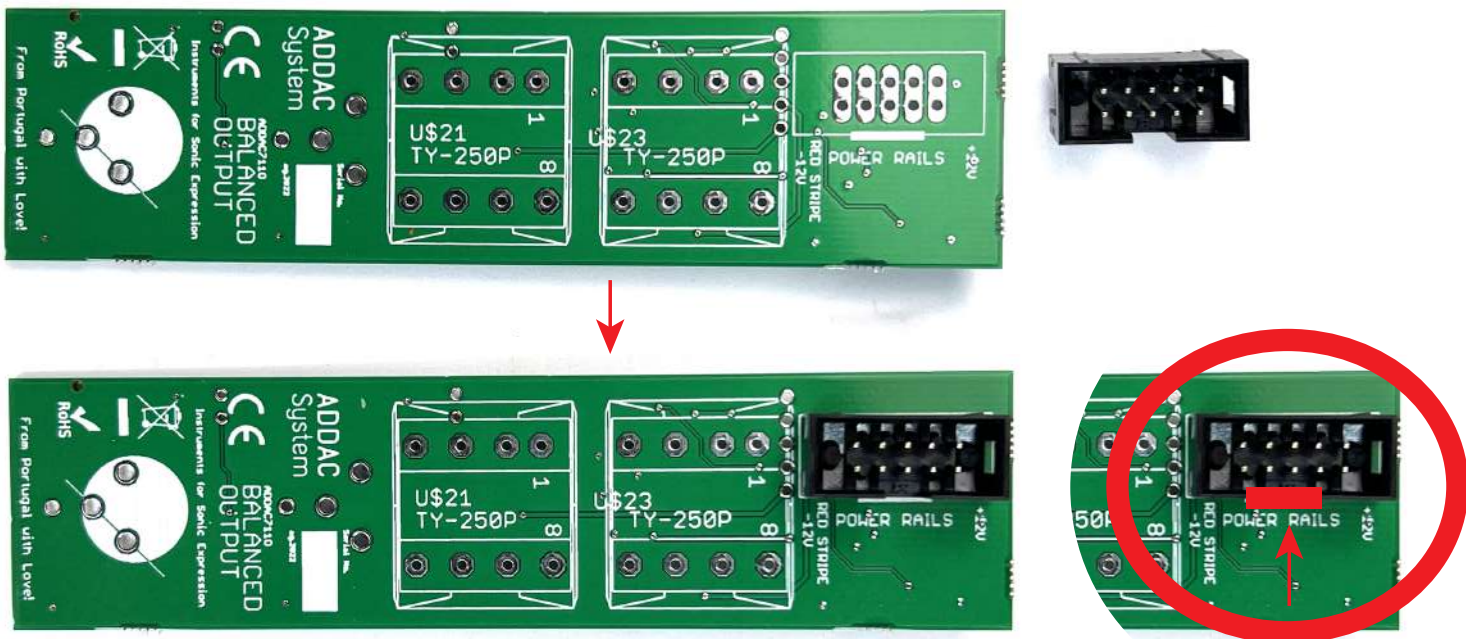
STEP 1:

Grab the pcb, gently brake it apart and trim the excess with a cutting plier.

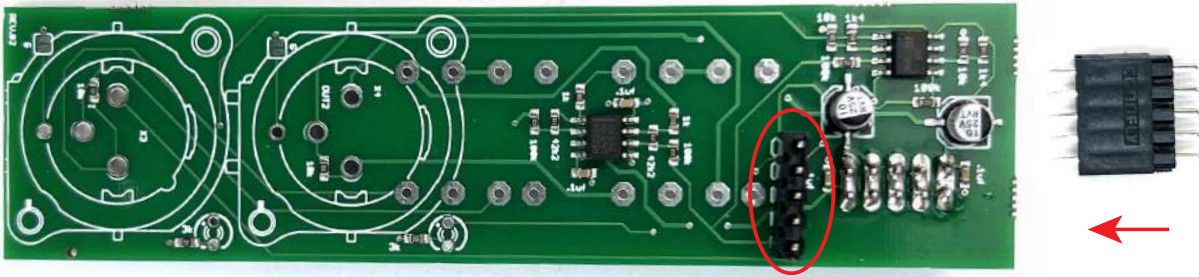


STEP 2:

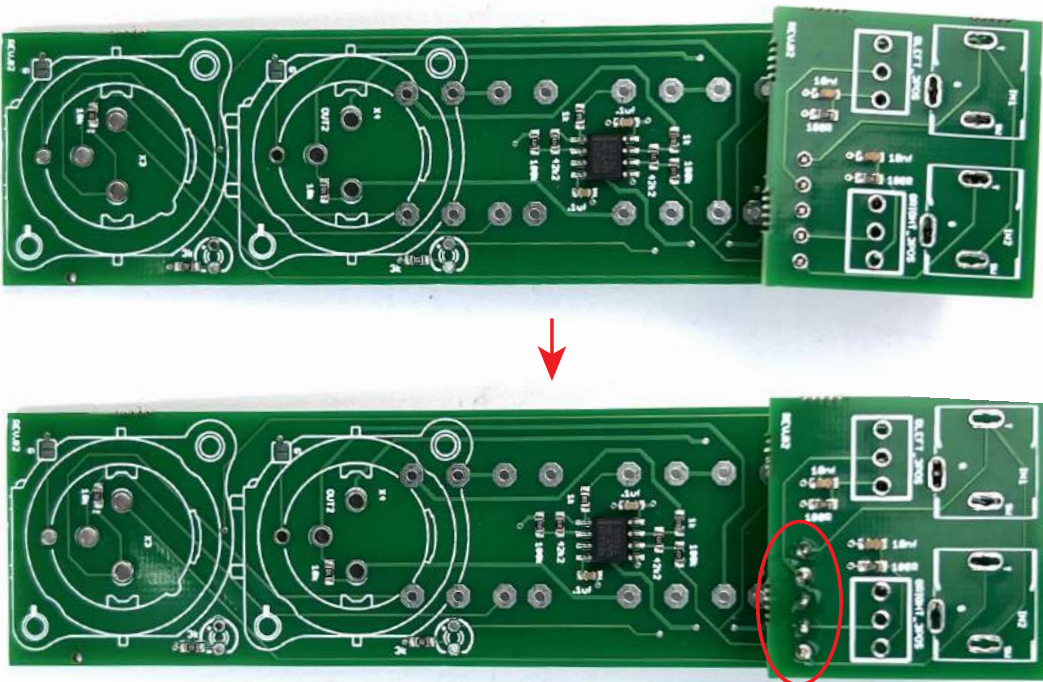
Place and solder the 2x5 boxed pinheader. Notice the indent orientation.



STEP 3:
Place and solder the 1X5 pinheader.

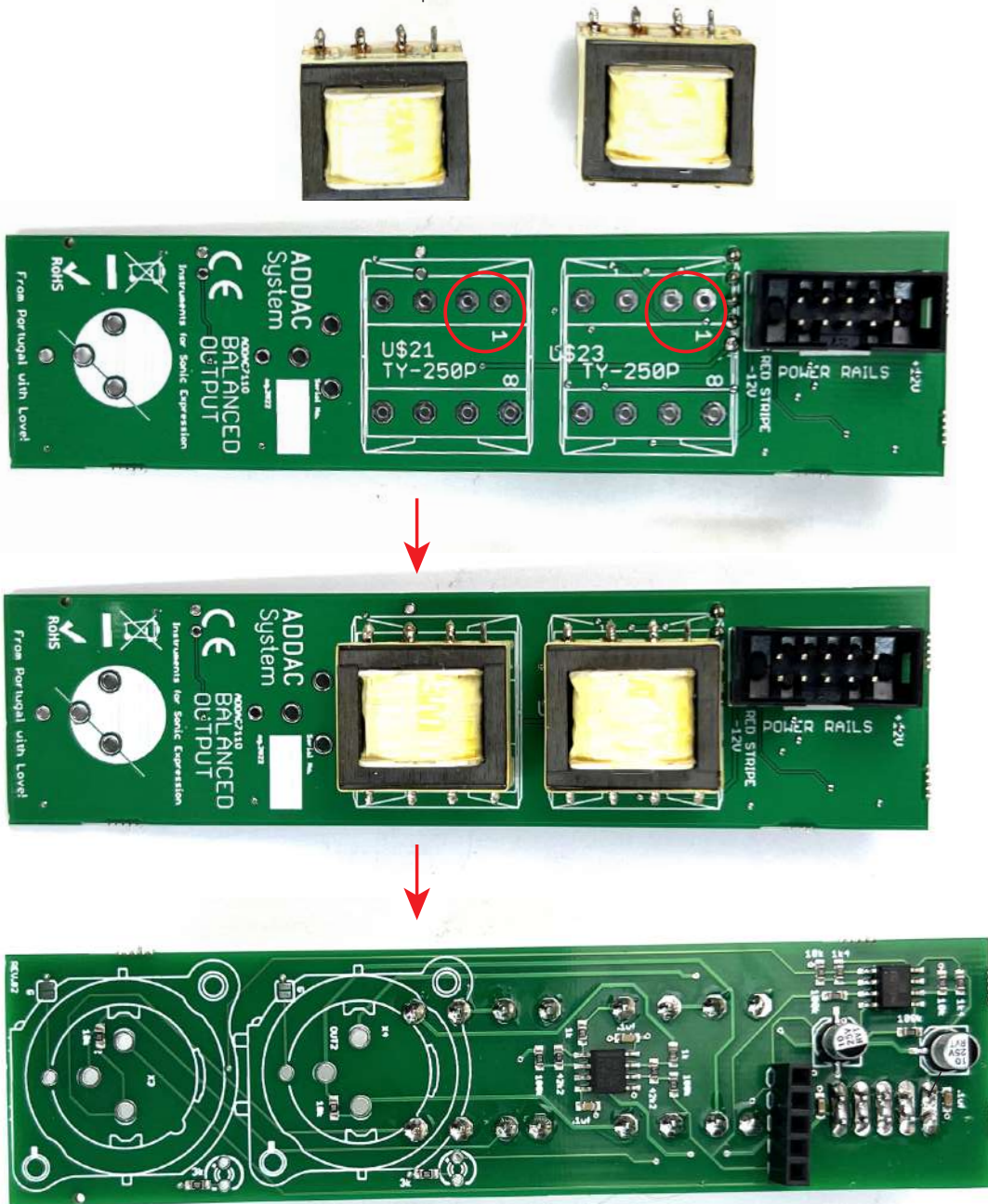


STEP 4:
Align both pcbs and solder the pinheader to the top pcb

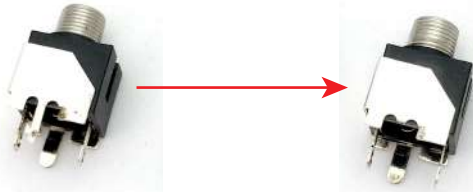


STEP 5:

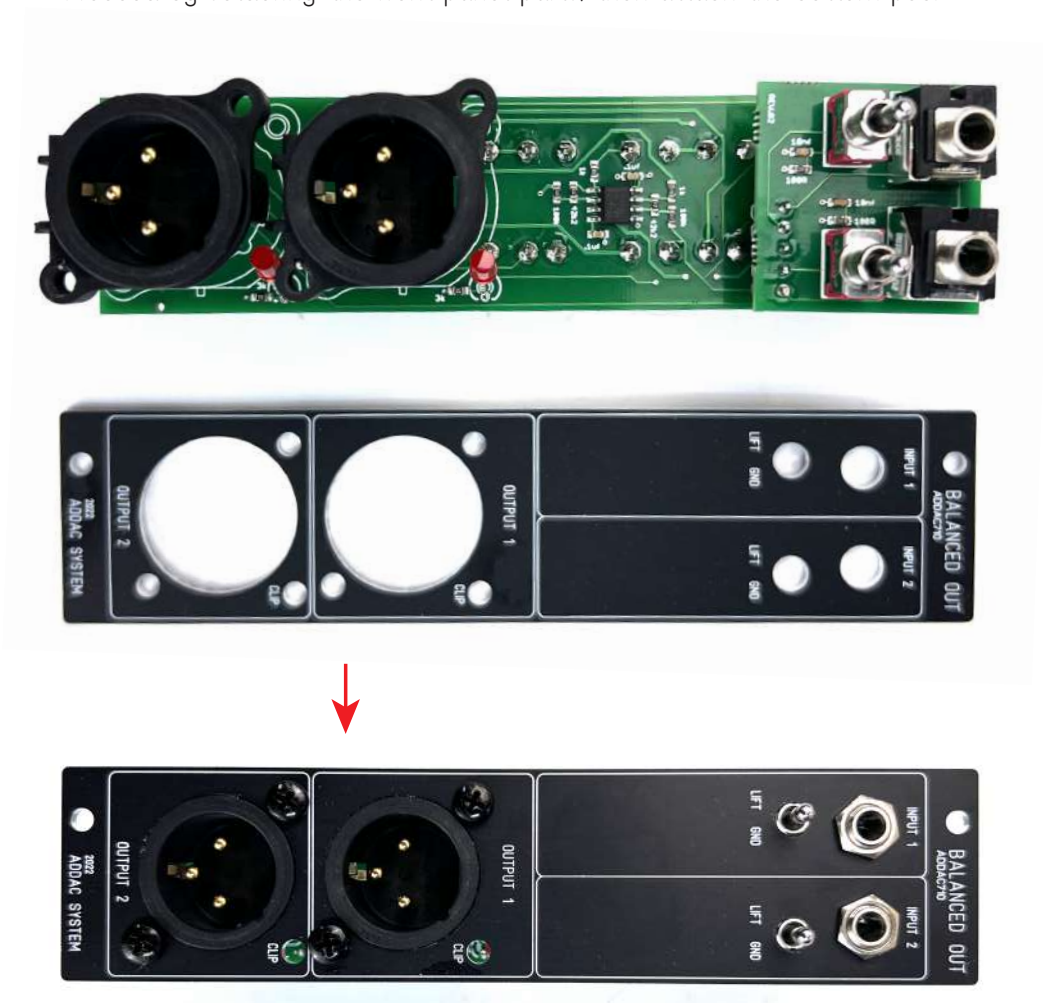
Place and solder the transformers, notice there's one leg which is placed at an odd spacing which defines the orientation of the part.



STEP 6:
Locate the jacks and cut the thinnest leg like shown below.



STEP 7:
Place the remaining parts on the pcbs, align the front panel and tighten the jack nuts. Proceed by soldering the front panel parts, then attach the bottom pcb.



Finish it by fixing the XLR connectors with the screws and soldering the connectors.

You're all done!

Happy patching!



For feedback, comments or problems please contact us at:
addac@addacsystem.com