



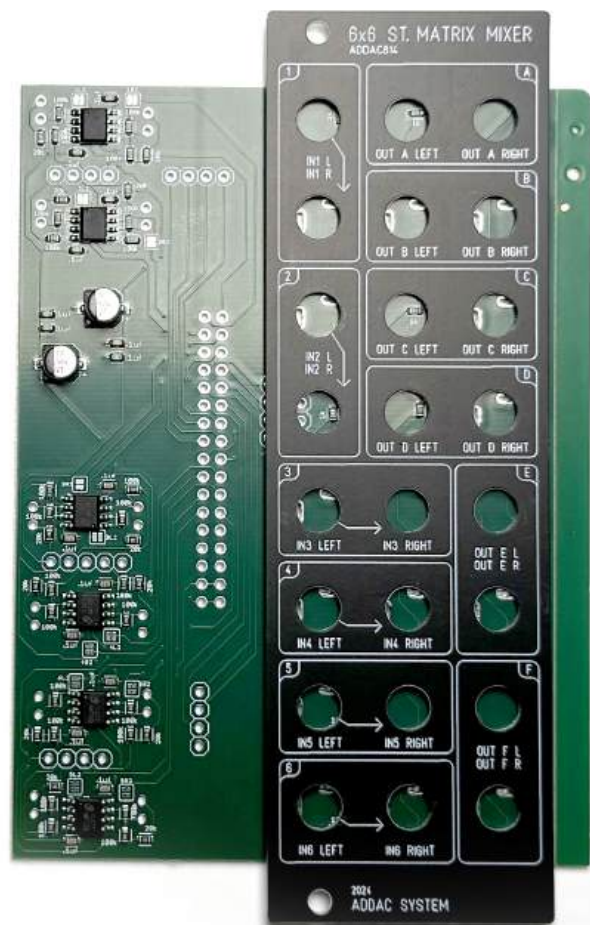
# System

ADDAC814 MATRIX MIXER  
ASSEMBLY GUIDE Revision.01 March.2025

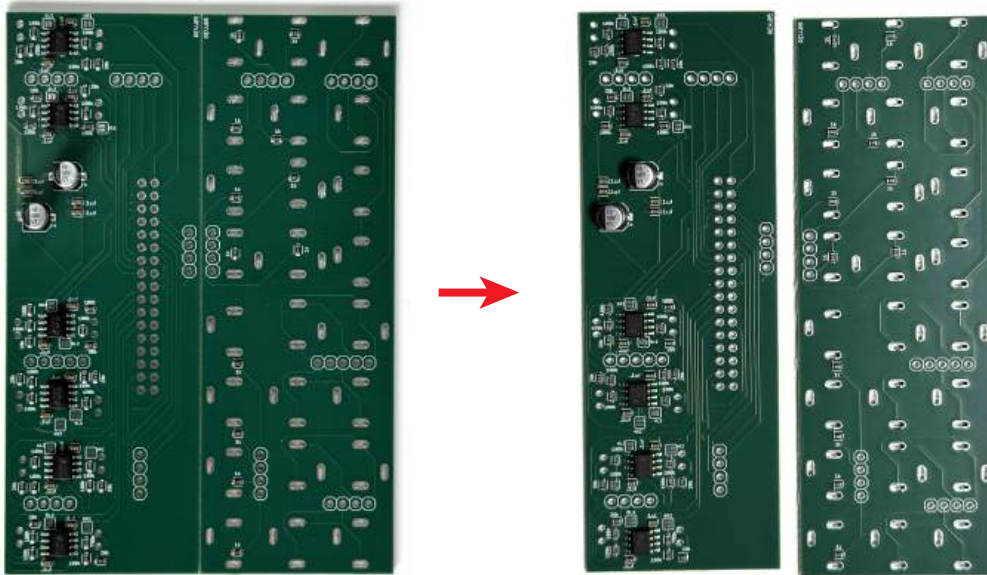
# ADDAC System

## ADDAC814 Jacks Assembly Guide

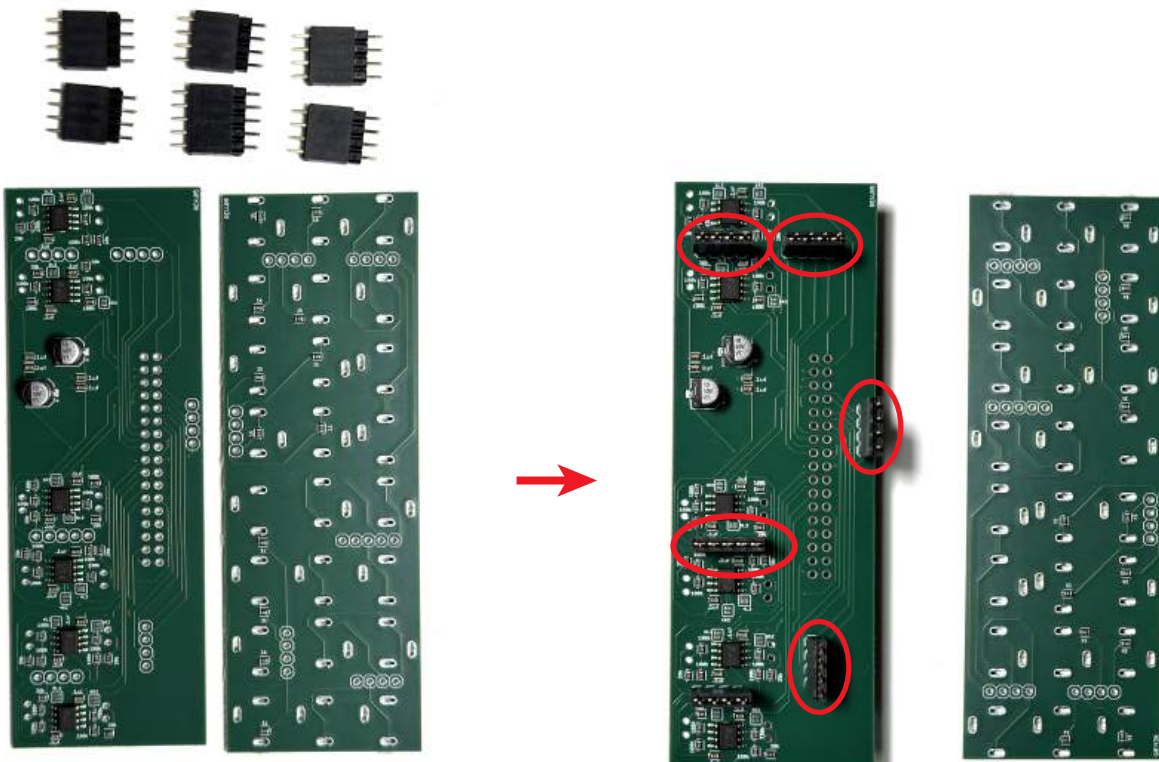
March.2025



STEP 1:  
Carefully break the pcbs apart like shown below.

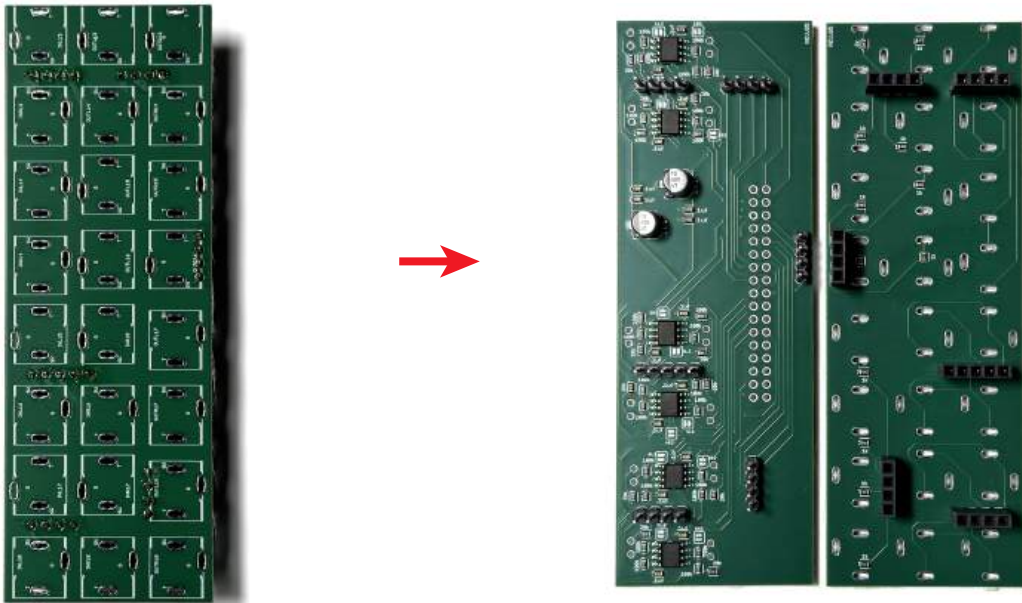


STEP 2:  
Locate the pinheaders and place them like shown below.



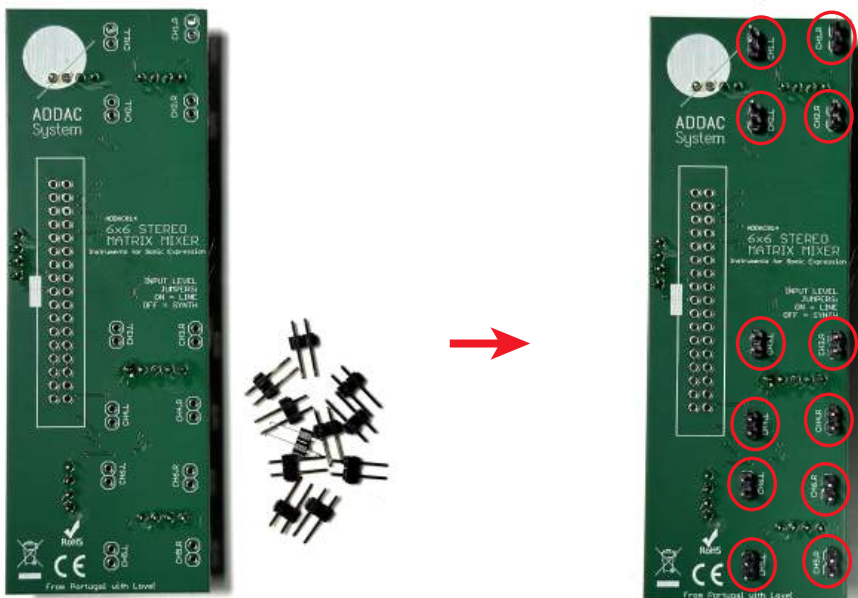
STEP 3:

Place the top pcb on top of the pinheaders and solder the pinheaders on both pcs. Once soldered split them apart.



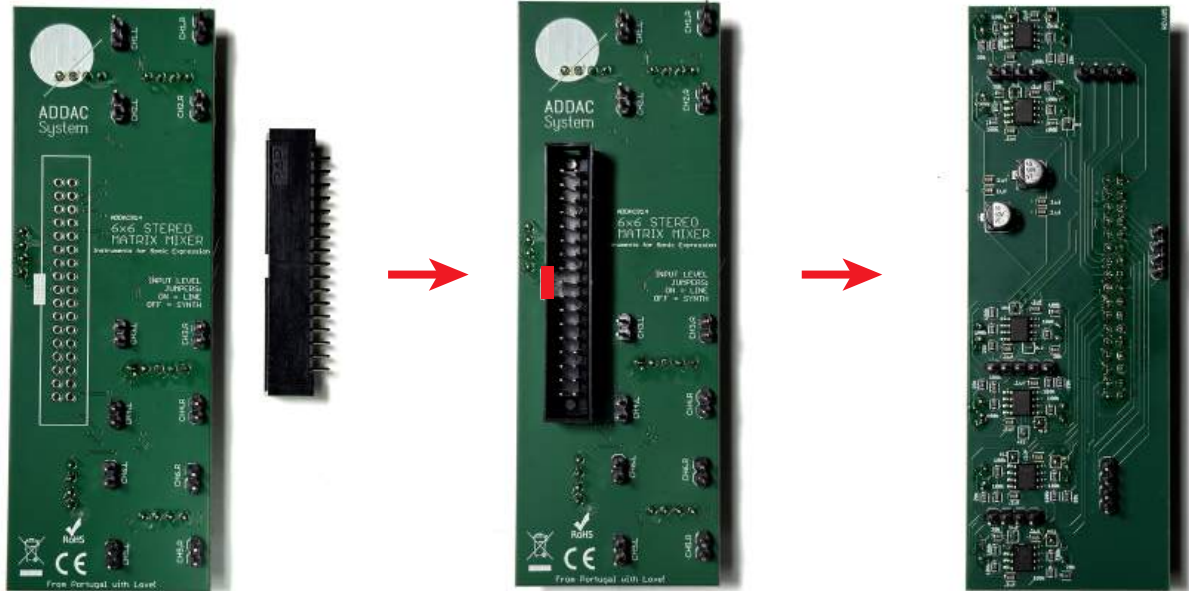
STEP 4:

Next locate all the 2x1 pinheaders place and solder them like shown below.



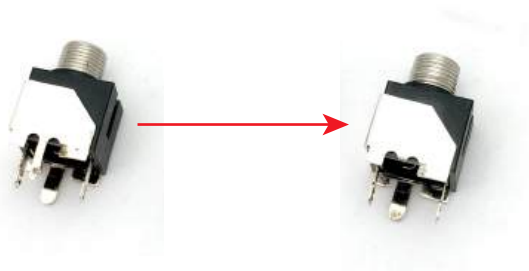
STEP 5:

Locate the 2x17 IDC header, notice the orientation of the indent, place and solder it like shown below.



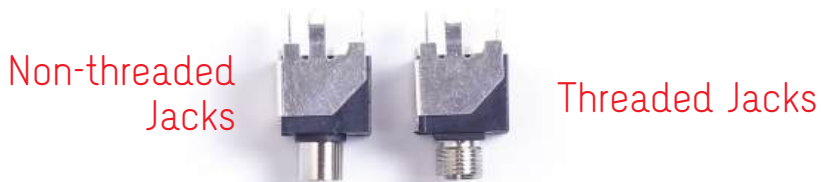
STEP 6:

Locate the jacks below and cut the thinnest leg like shown below.



STEP 7:

Next notice there are 2 jack types, threaded and non-threaded. Separate them by type.



STEP 8:

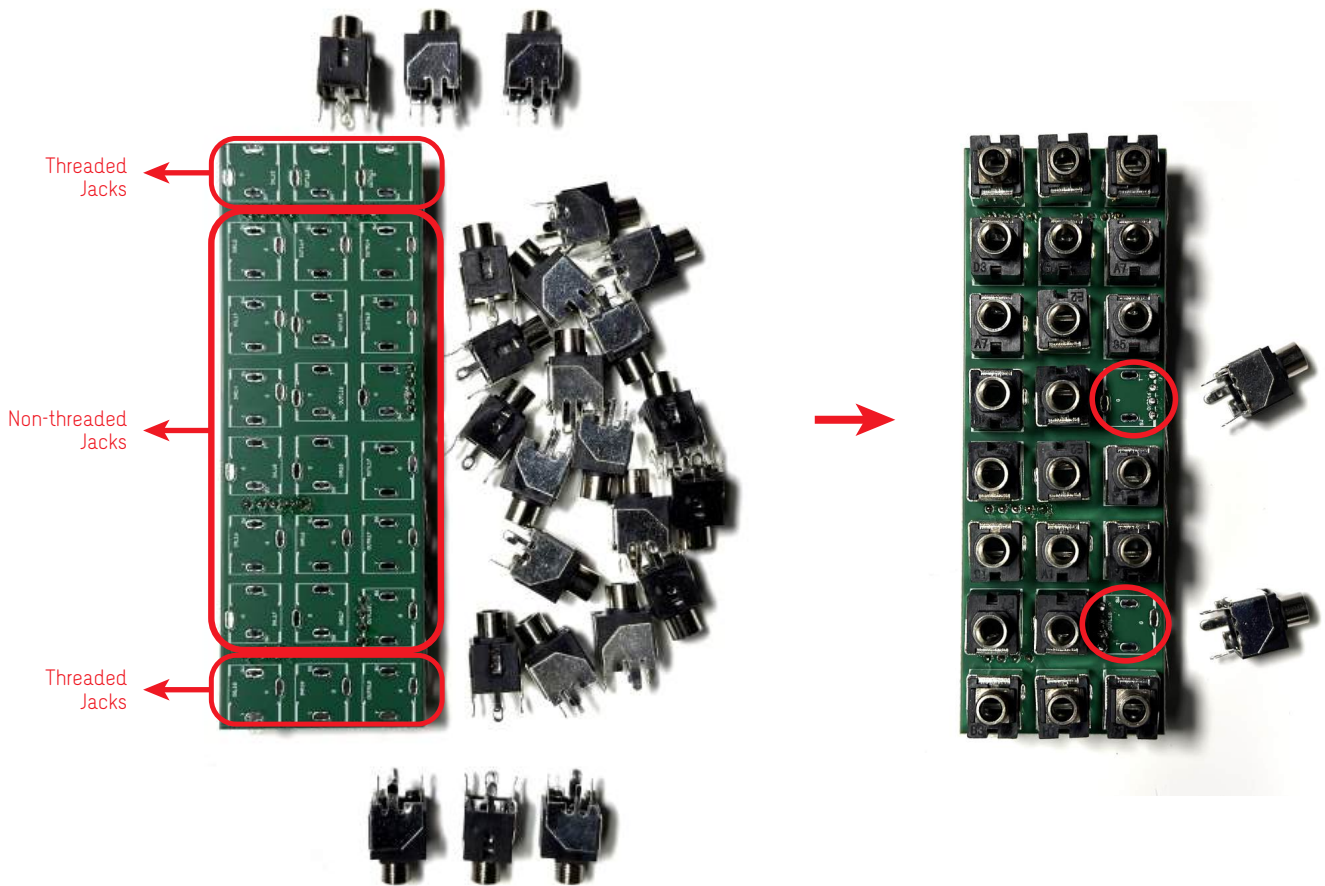
Before placing the jacks, using a cutter, trim the top of these pinheaders flush with the pcb.



STEP 9:

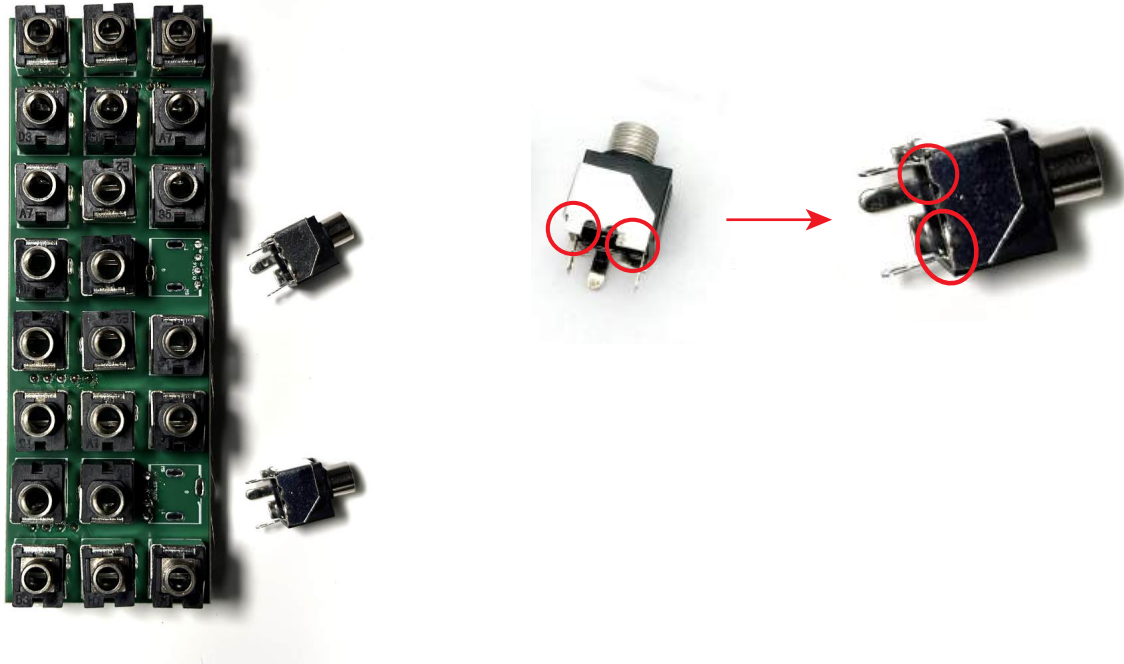
Here's the different jack types locations, 3 threaded jacks on the top row and 3 on the bottom row, all other rows are non-threaded jacks.

Place the jacks on the pcb but leave the two marked jacks on the side



STEP 10:

For the remaining 2 jacks cut the extra support points on the side of the thin leg that was cut on step 6. This prevents shorting the pinheaders below the jacks.

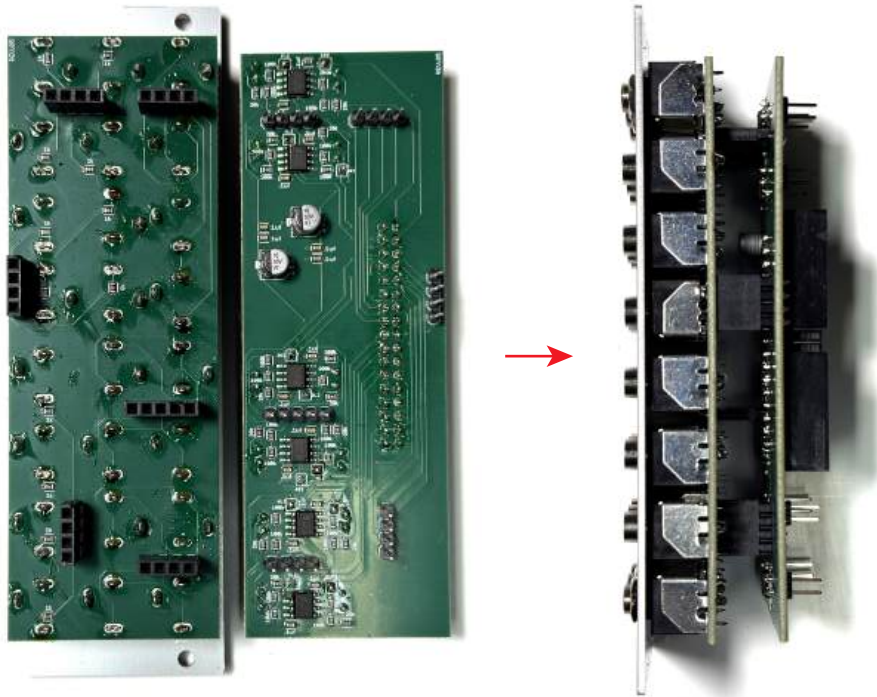


STEP 11:

Place the remaining 2 jacks, place the front panel and tighten the 3 top and 3 bottom nuts. Proceed by soldering all jacks legs



STEP 12:  
Put together both pcbs and you're done.



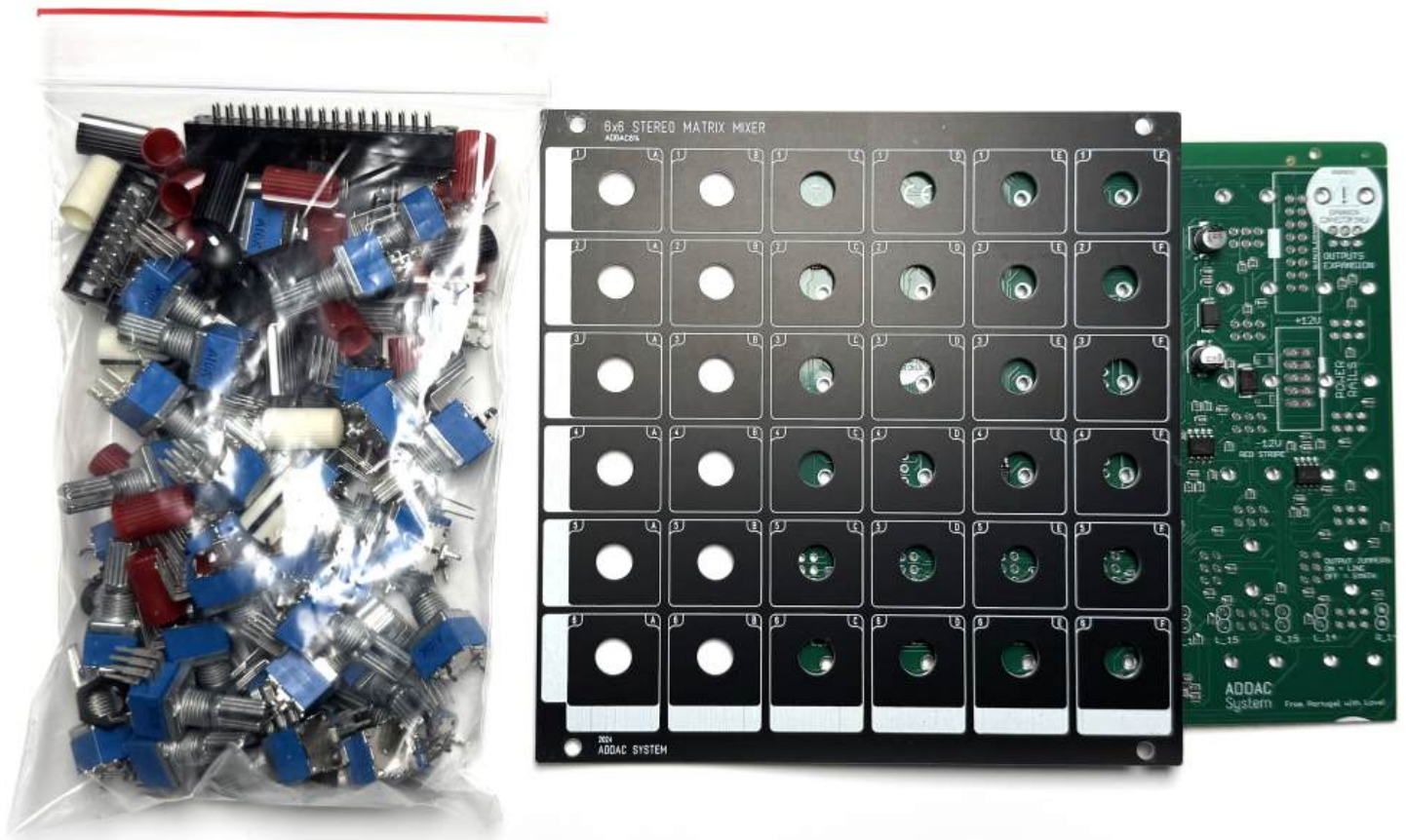
Proceed to the User's Guide to get info about connections.  
[https://www.addacsystem.com/contents/productdownload/ADDAC814\\_MatrixMixer\\_UsersGuide\\_6302.pdf](https://www.addacsystem.com/contents/productdownload/ADDAC814_MatrixMixer_UsersGuide_6302.pdf)



# ADDAC System

## ADDAC814 Controls Assembly Guide

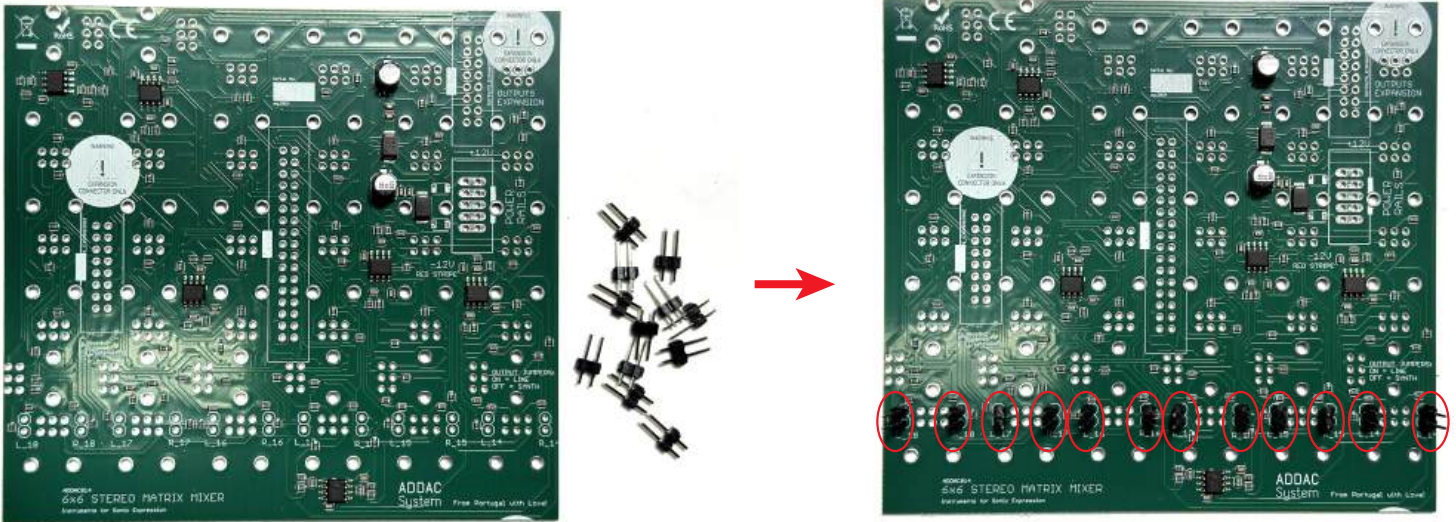
March.2025



## ADDAC814 Assembly Guide

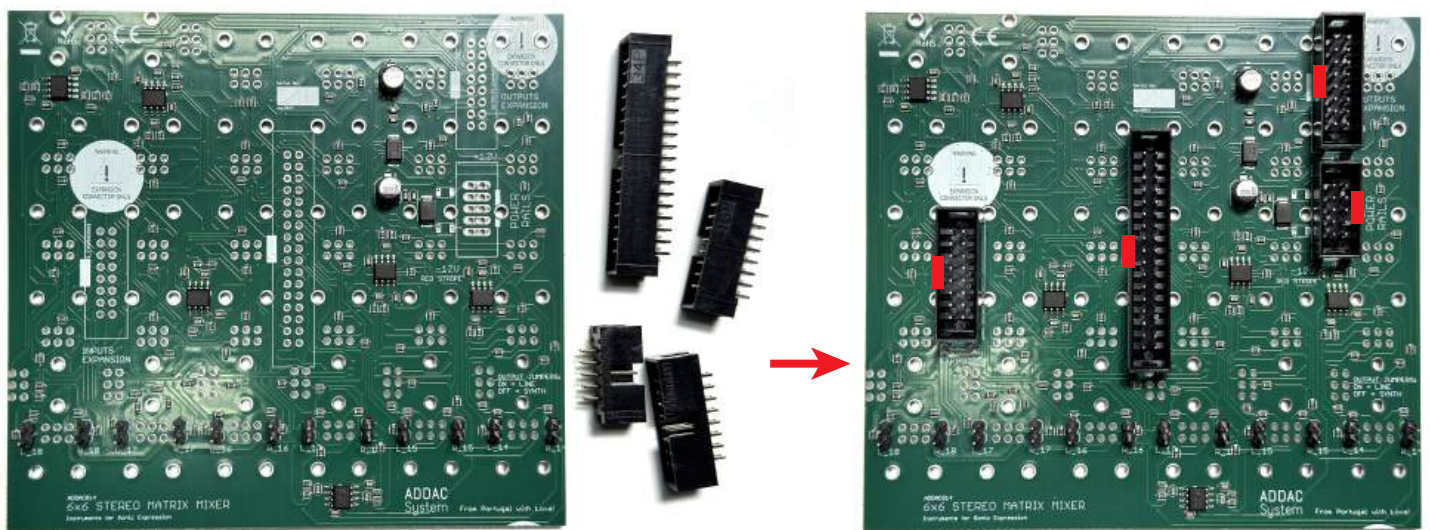
### STEP 1:

Locate and place the 2 pin pinheaders, proceed by soldering them.

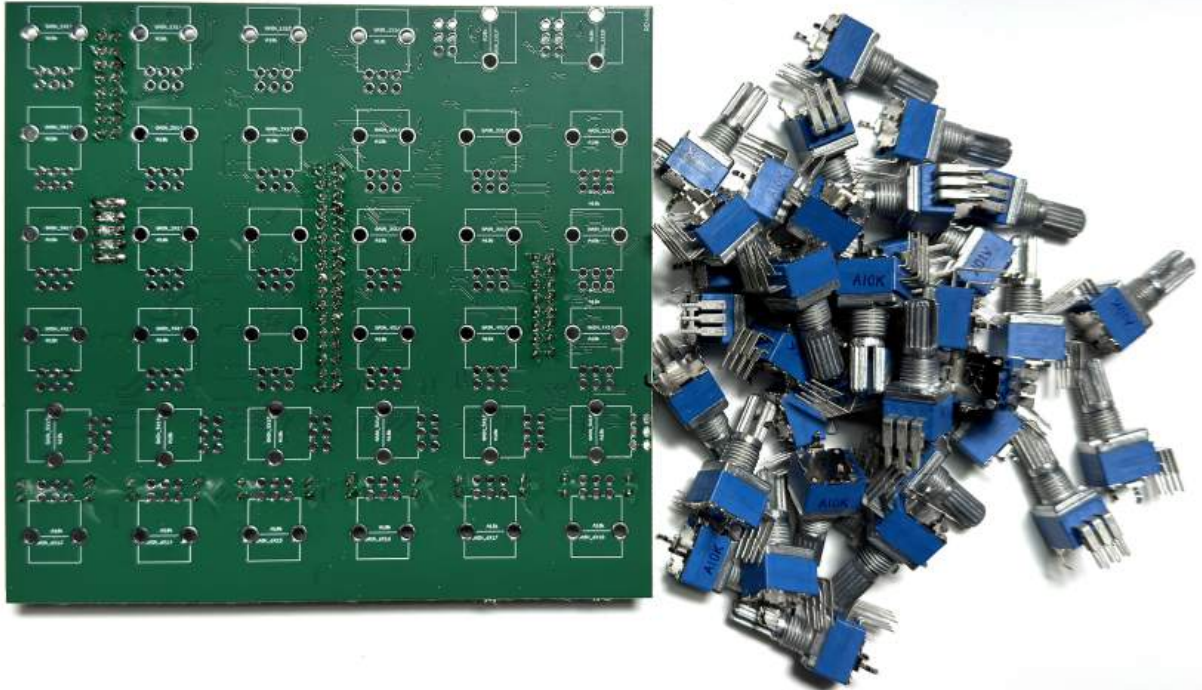


### STEP 2:

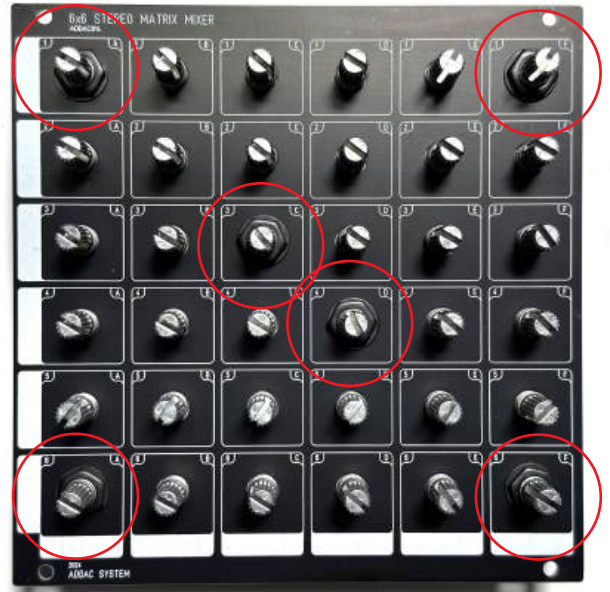
Locate and place the IDC connectors, notice the orientation of the indent. Proceed by soldering them.



STEP 3:  
Locate and place all potentiometers, do not solder them just yet.



STEP 4:  
Place the front panel and tighten the 6 nuts as shown below.



STEP 5:  
Proceed by soldering all pots.  
Finish it by placing all the knobs.



Proceed to the [User's Guide](https://www.addacsystem.com/contents/productdownload/ADDAC814_MatrixMixer_UsersGuide_6302.pdf) to get info about connections.

# ADDAC System

## ADDAC814 Expansion Assembly Guide

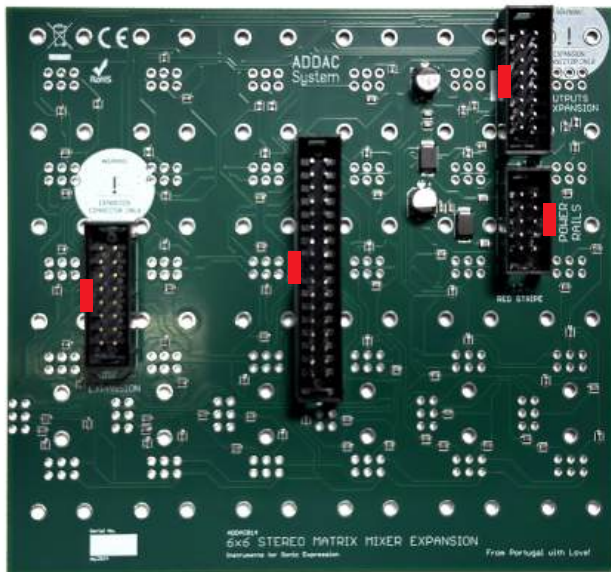
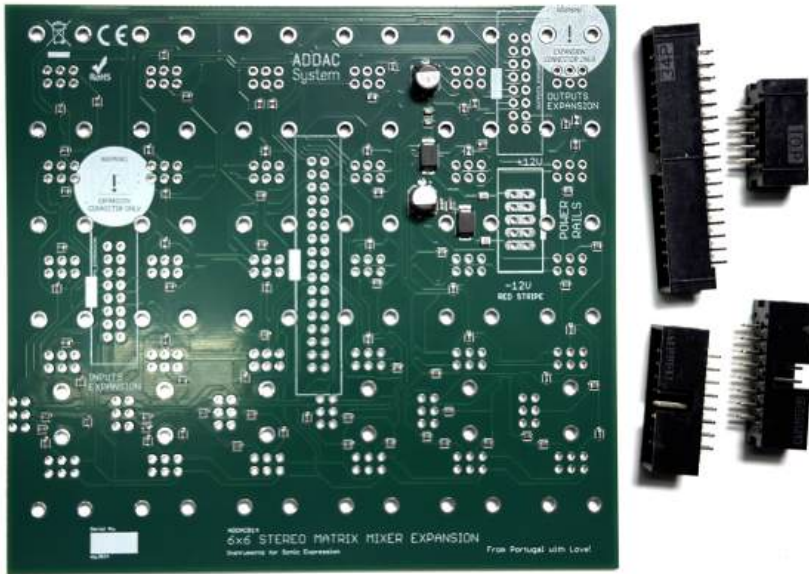
March.2025



## ADDAC814 Assembly Guide

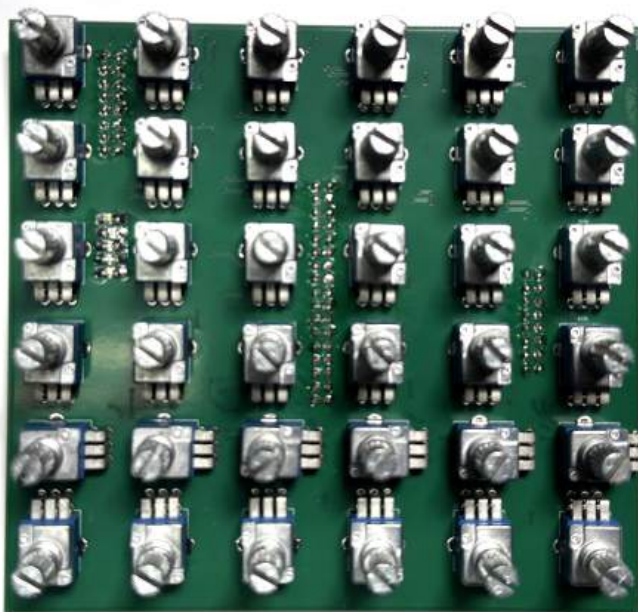
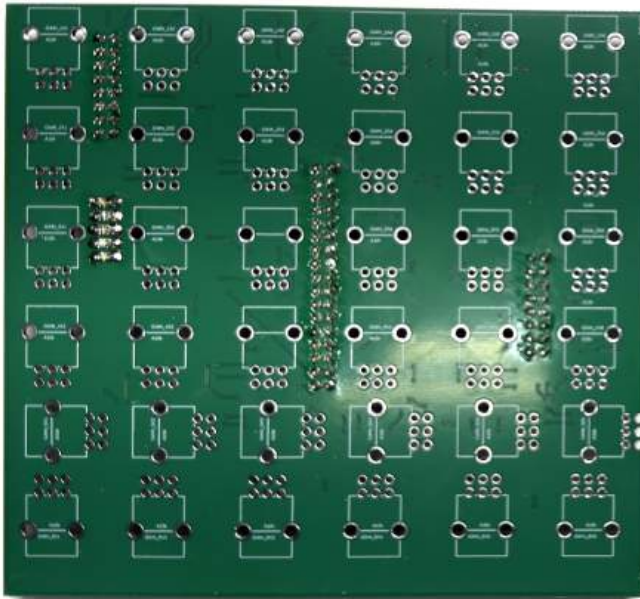
### STEP 1:

Locate and place the IDC connectors, notice the orientation of the indent. Proceed by soldering them.

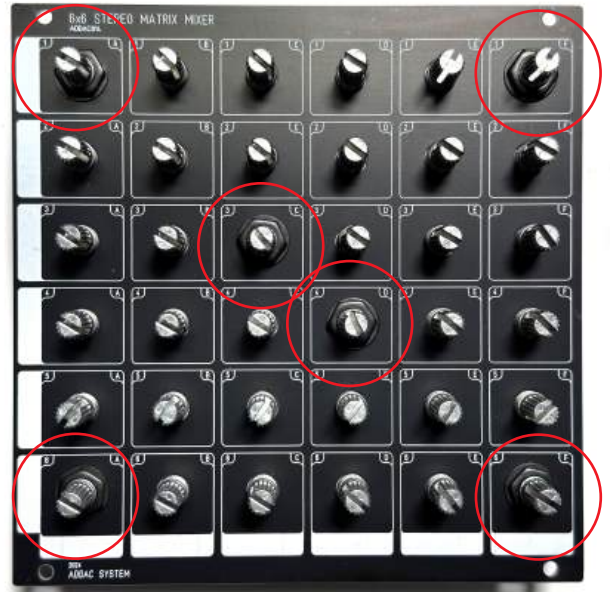


STEP 2:

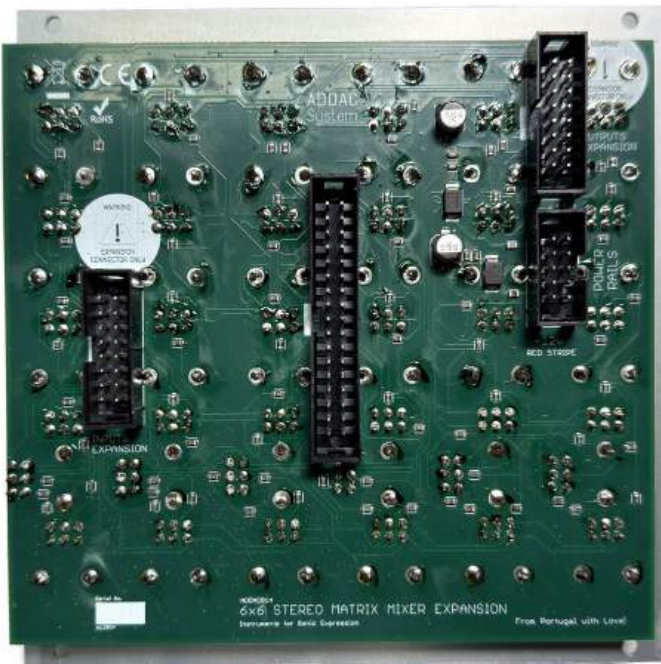
Locate and place all potentiometers, do not solder them just yet.



STEP 3:  
Place the front panel and tighten the 6 nuts as shown below.



STEP 4:  
Proceed by soldering all pots.  
Finish it by placing all the knobs.



Proceed to the User's Guide to get info about connections.  
[https://www.addacsystem.com/contents/productdownload/ADDAC814\\_MatrixMixer\\_UsersGuide\\_6302.pdf](https://www.addacsystem.com/contents/productdownload/ADDAC814_MatrixMixer_UsersGuide_6302.pdf)



For feedback, comments or problems please contact us at:  
[addac@addacsystem.com](mailto:addac@addacsystem.com)