



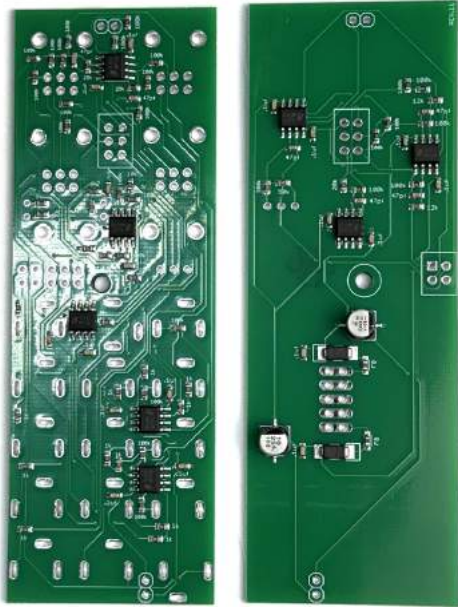
# ADDAC System

## ADDAC813 Assembly Guide

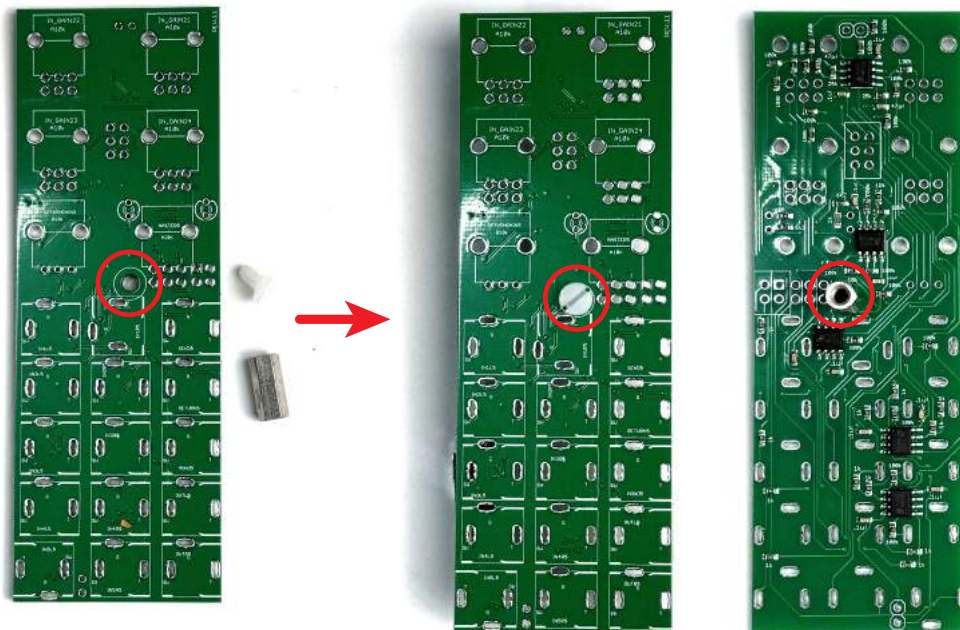
May.2024



STEP 1:  
Start by grabbing the pcb and gently brake it apart.

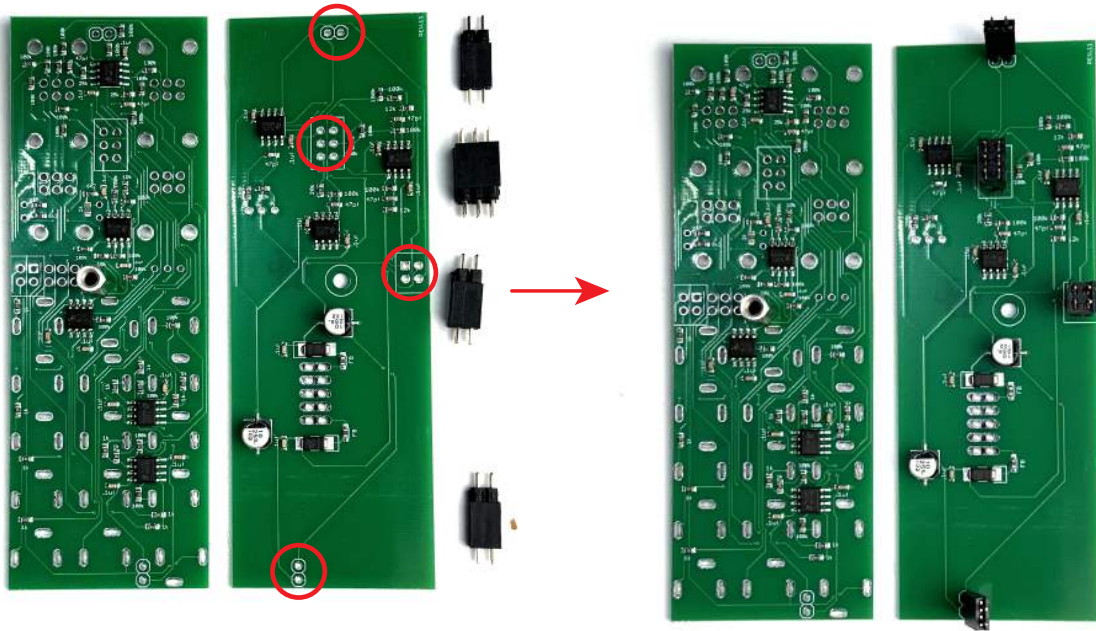


STEP 2:  
Locate the plastic screw and attach it to the spacer like shown below.

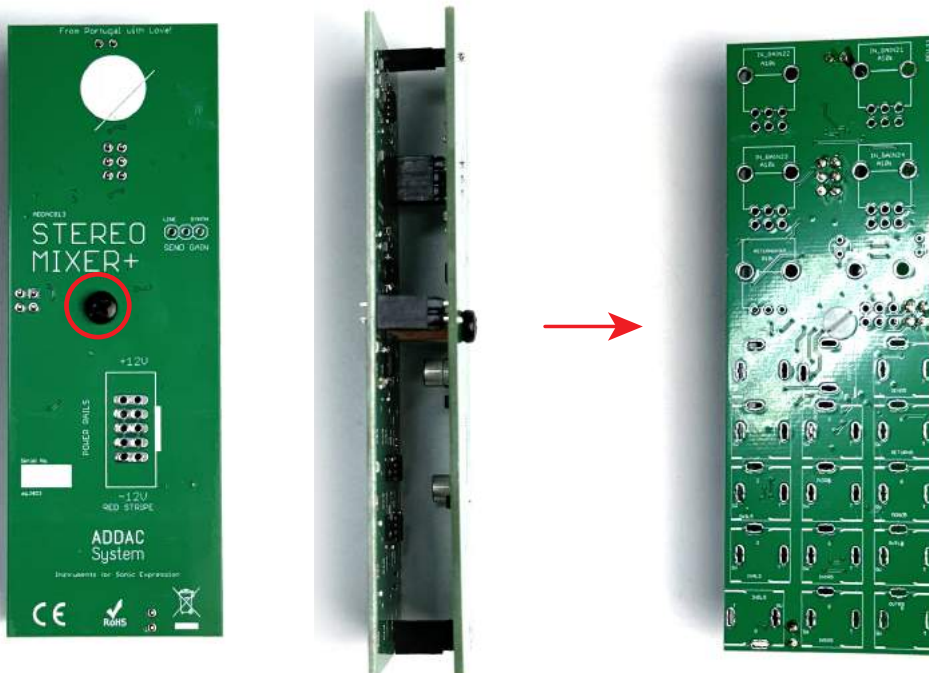




STEP 3:  
Next let's place all pinheaders.

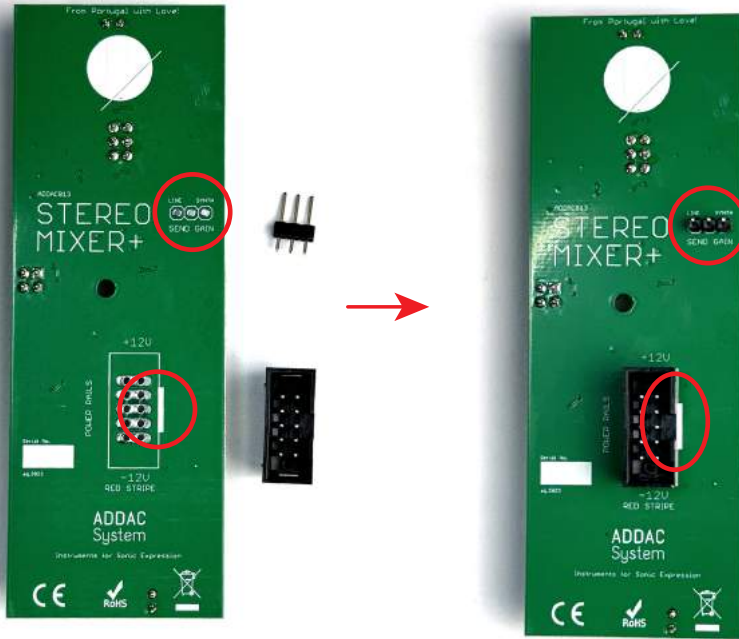


STEP 4:  
Proceed by placing the back screw to hold the pinheaders in place and solder them to both pcs



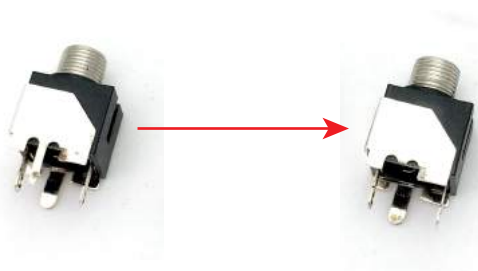
STEP 5:

Next place and solder the remaining pinheader and boxed header. Notice the orientation of the boxed header.



STEP 6:

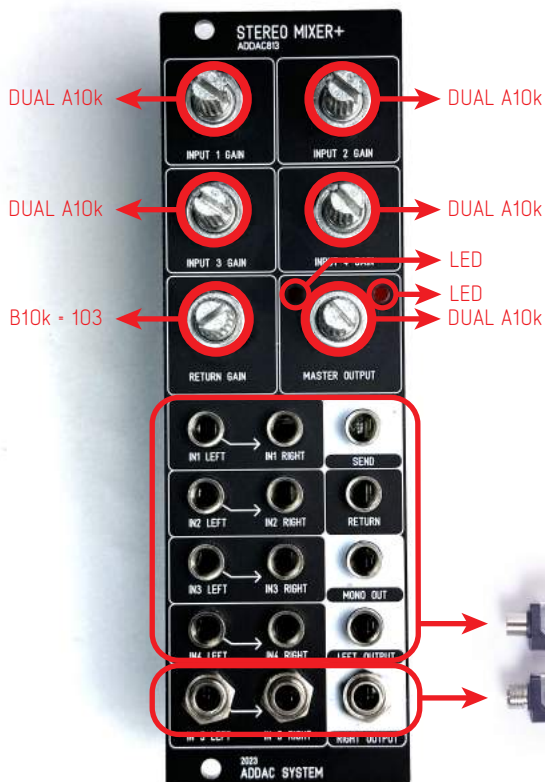
Locate the jacks and cut the thinnest leg like shown below.



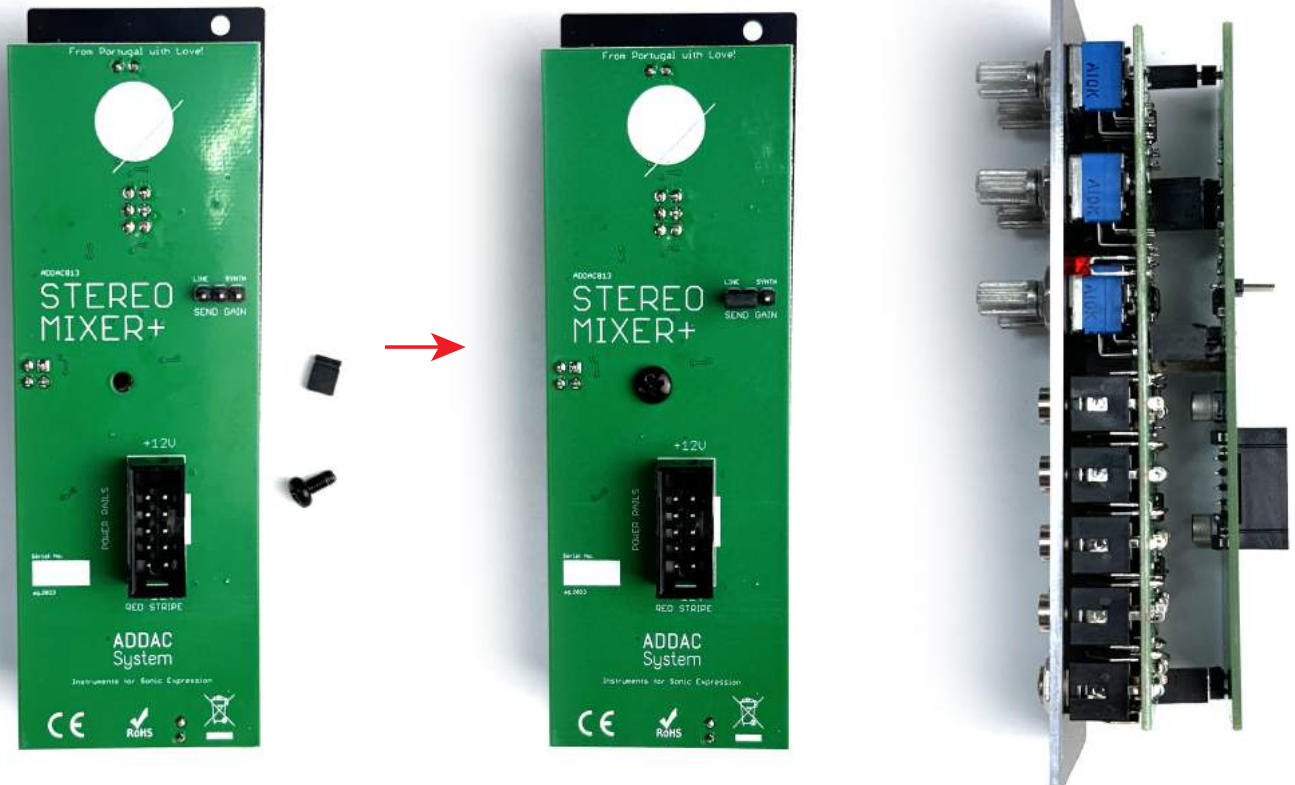
STEP 7:

Proceed by placing all parts in the pcb and then attach the frontpanel using the nuts to secure everything in place.

Notice all parts' details below, make sure the panel is parallel to the pcb, it's recommended to slightly raise the potentiometers from the pcb to get the best result.



STEP 8:  
Next place the bottom screw and the jumper at the setting of your liking.





Complete it by placing the knobs and you've finished the assembly process!

Happy patching!





For feedback, comments or problems please contact us at:  
[addac@addacsystem.com](mailto:addac@addacsystem.com)