

# ADDAC System

ADDAC810 PHONO PRE-AMP  
ASSEMBLY GUIDE

Revision.01 February.2017

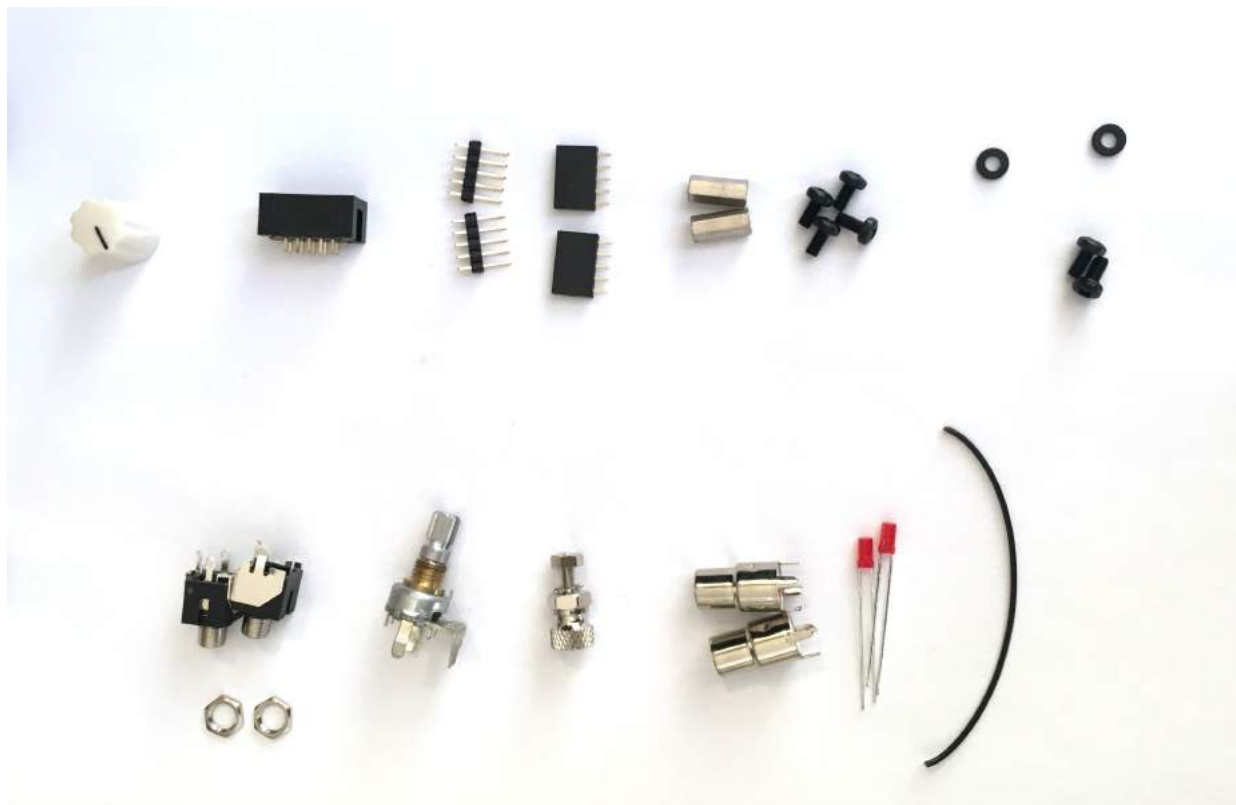
# ADDAC System

---

## ADDAC810 Assembly Guide

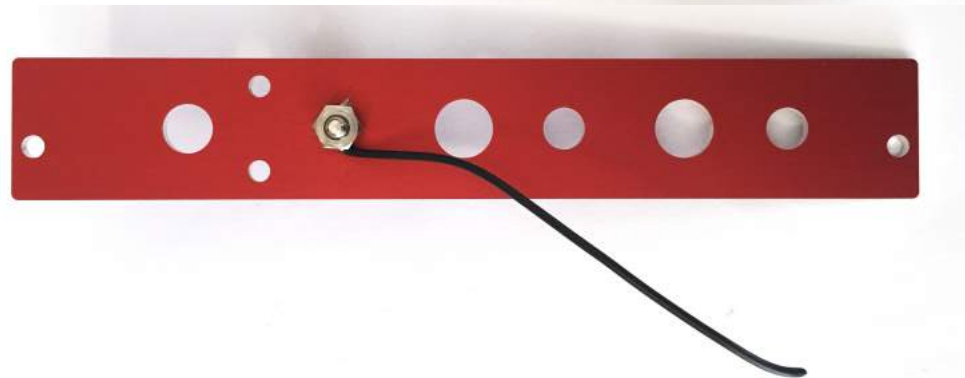
February.2017

Unpack and separate all kit parts



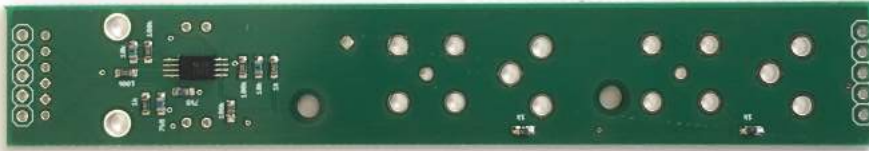
## ADDAC810 Assembly Guide : Prepare panel

Locate the front panel, earth connector and short wire. Strip about 1cm of of the wire, place the earth connector on the panel wrapped the stripped wire around the connector and use the washer and nut to hold it against the panel. Tighten the nut and connector.



## ADDAC810 Assembly Guide : Front pcb and panel

Locate the front pcb



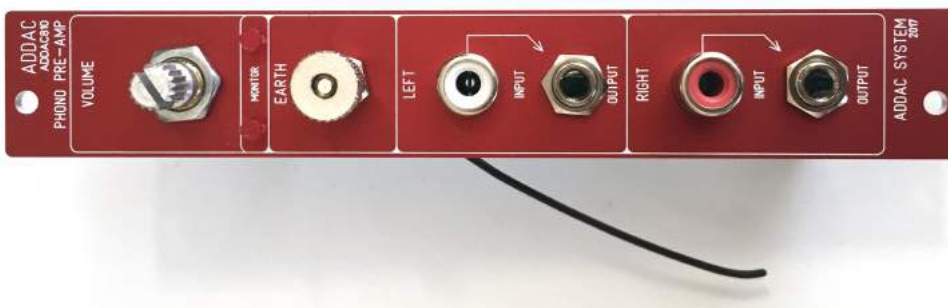
Locate the front pcb and the female headers, solder both at each end of the pcb



Turn the pcb around and place the pot, 2 leds, 2 rca connectors and 2 jacks



Insert the front panel and screw the pot and jack nuts



You can now solder all parts to the pcb.

**TIP:** When soldering the RCA connectors pull them as close to the panel as possible. This will allow the RCA jack to go all the way in when plugged in.

## ADDAC810 Assembly Guide : Front pcb and panel

---

After soldering all parts, strip the loose end of the short wire insert and solder it to the pcb Earth hole



Insert 2 of the 6mm screws and tight them to the spacers



## ADDAC810 Assembly Guide : Back pcb and final steps

---

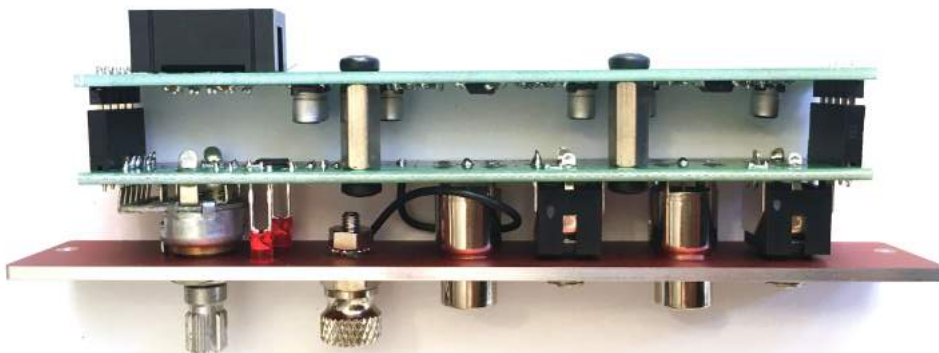
Pick the back pcb, place and solder the male headers to each end of the pcb



Place the IDC power connector in the back of the pcb and solder it



Attach both pcs and place the last 2 screws to fix both pcs together



Attach the Knob to the potentiometer shaft and you're done!

For feedback, comments or problems please contact us at:  
addac@addacsystem.com

