



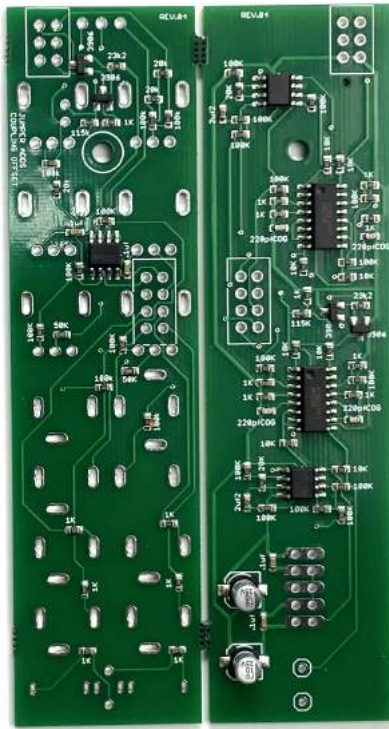
ADDAC604
ASSEMBLY GUIDE

DUAL FILTER
Revision.02 June.2024

ADDAC System

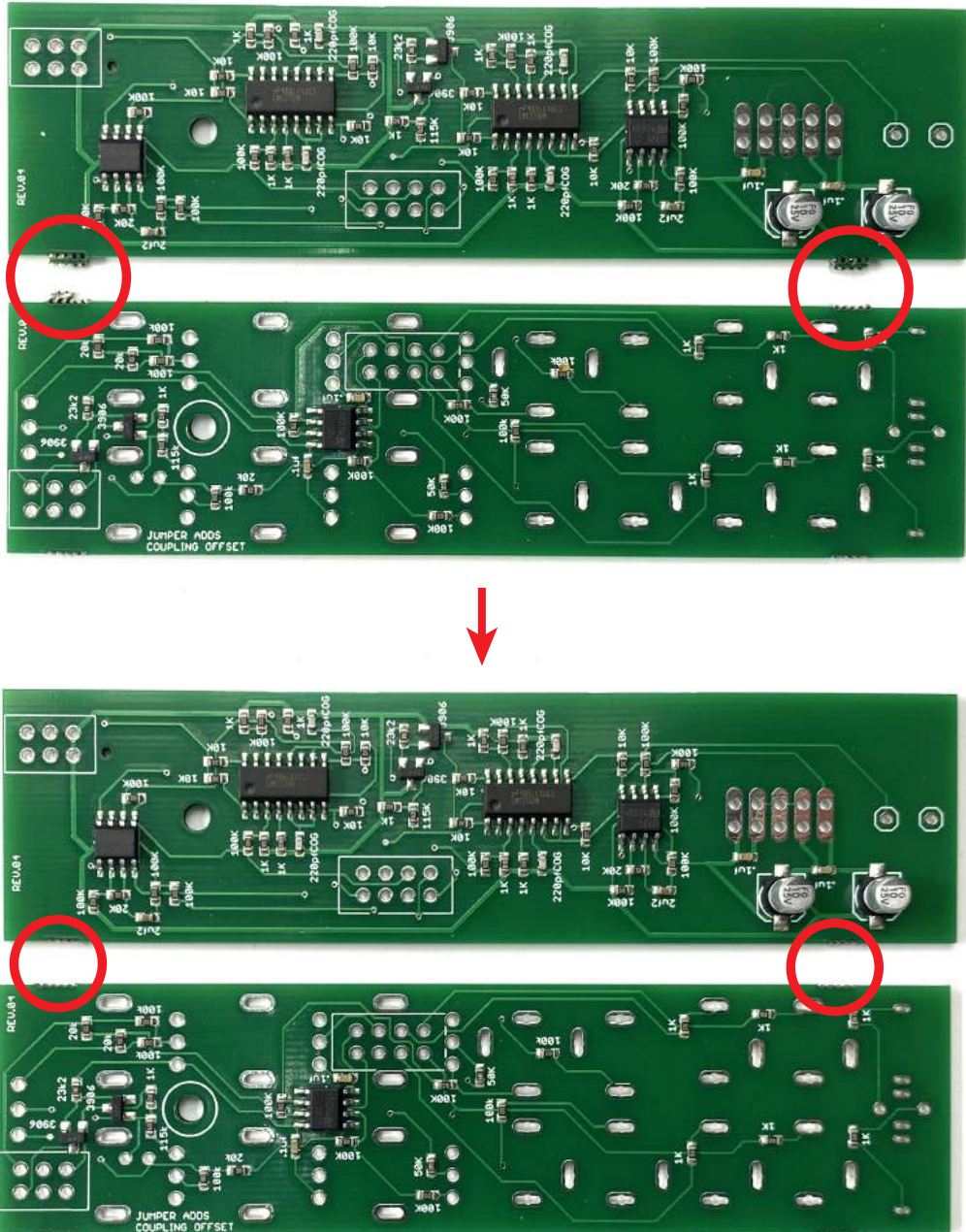
ADDAC604 Assembly Guide

June.2024



STEP 1:

Start by separating the pcbs and trim the excess material with cutting pliers like shown below.



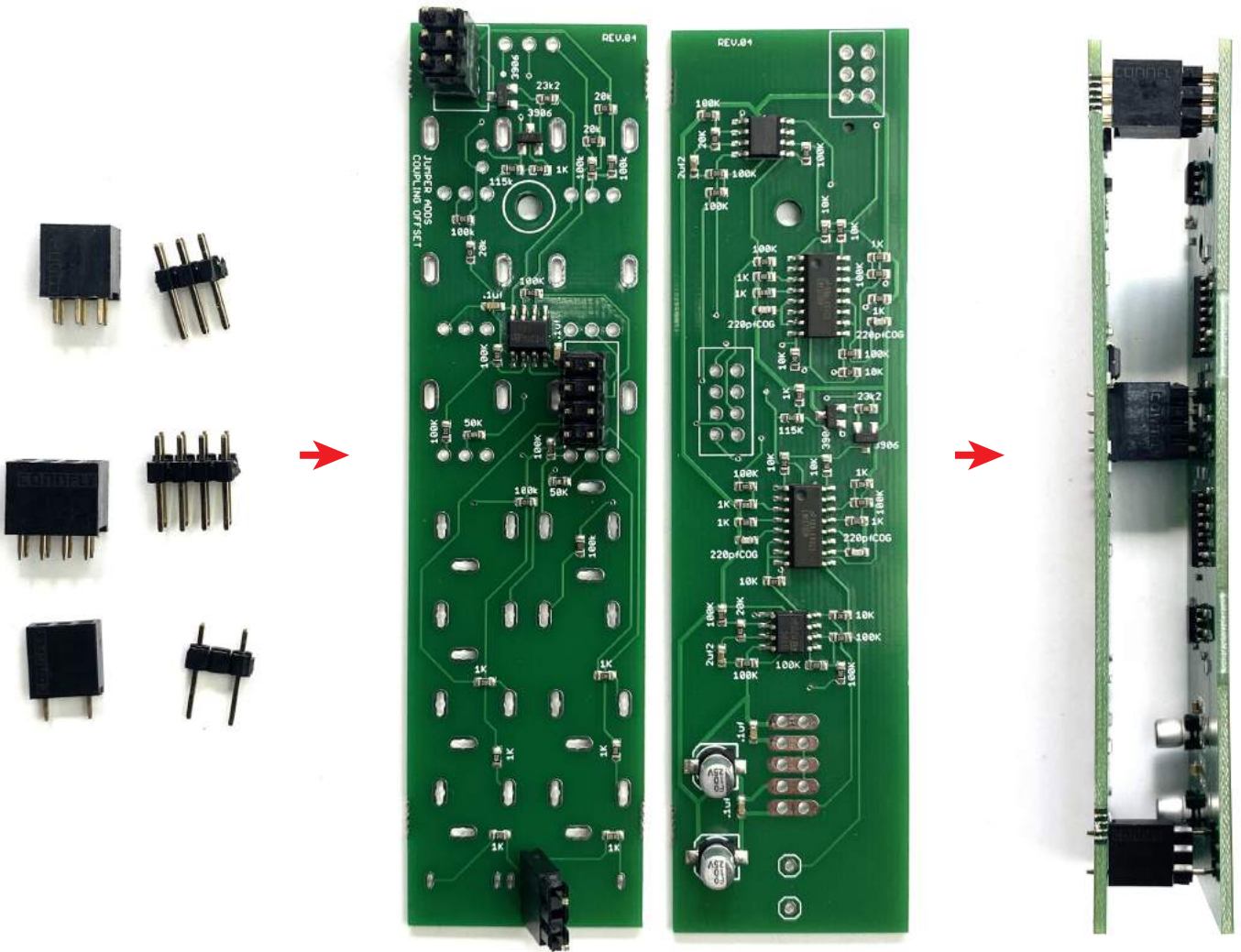
STEP 2:

Next locate the 3 pin male and female pinheaders and use a pliers to remove the middle pin like shown below.



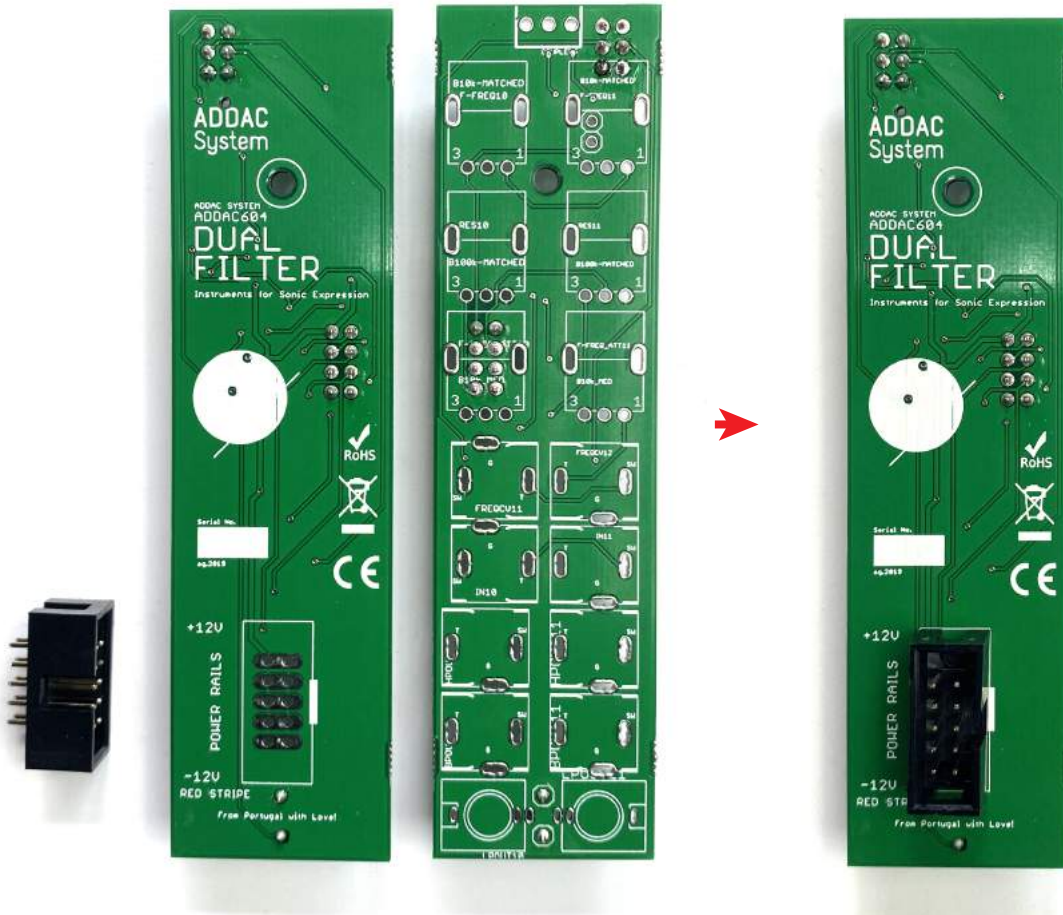
STEP 3:

Locate the remaining pinheaders and place them like shown below. Then proceed to solder all pins on both boards.



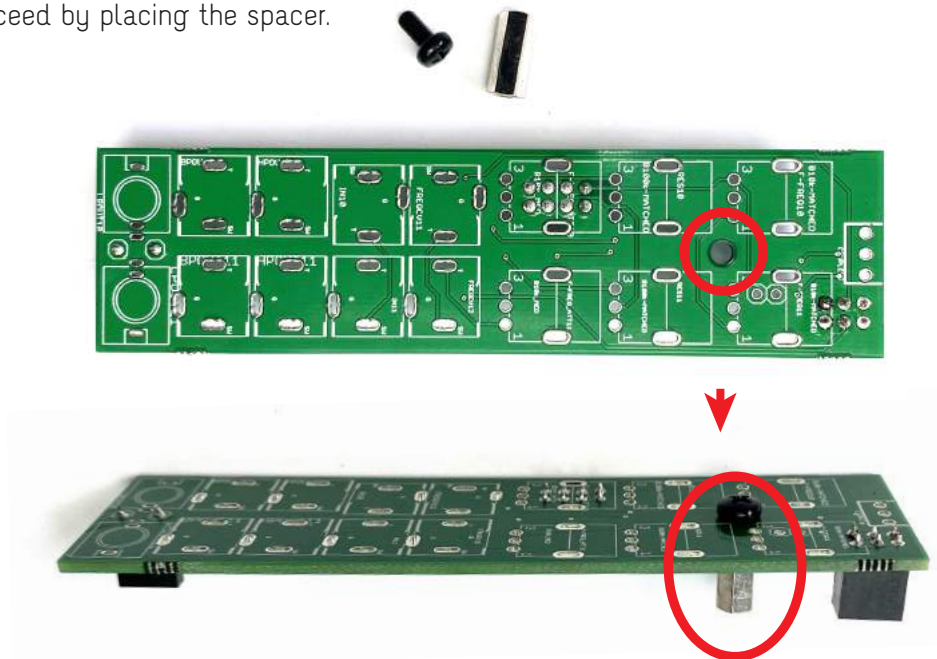
STEP 4:

Next locate and solder the 2x5 power connector, notice the hole orientation marking on the pcb.



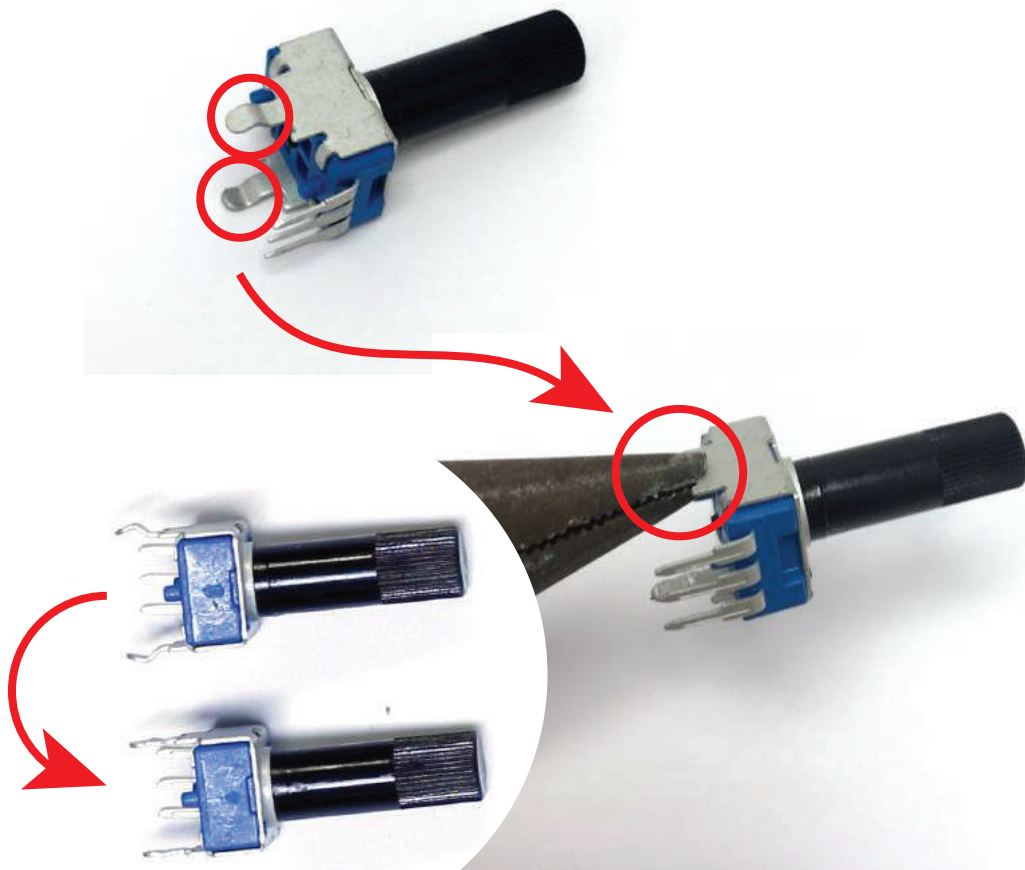
STEP 5:

Proceed by placing the spacer.



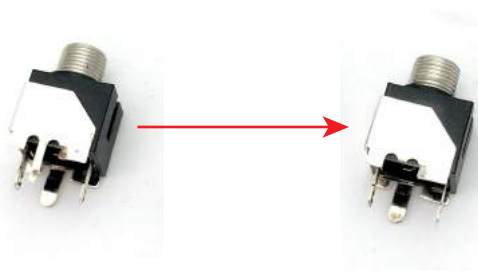
STEP 6A:

Next locate all 6 plastic shaft trim pots and flatten out their legs with the help of some pliers, like shown below.



STEP 6B:

Locate the jacks below and cut the thinnest leg like shown.

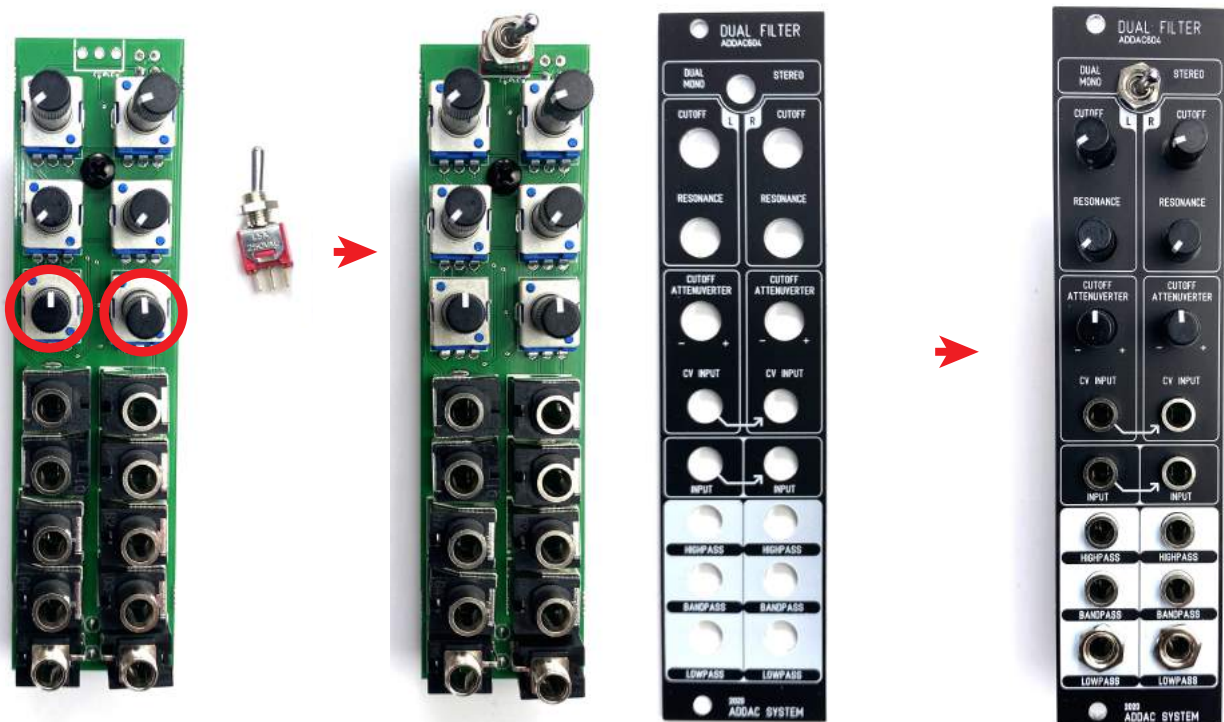
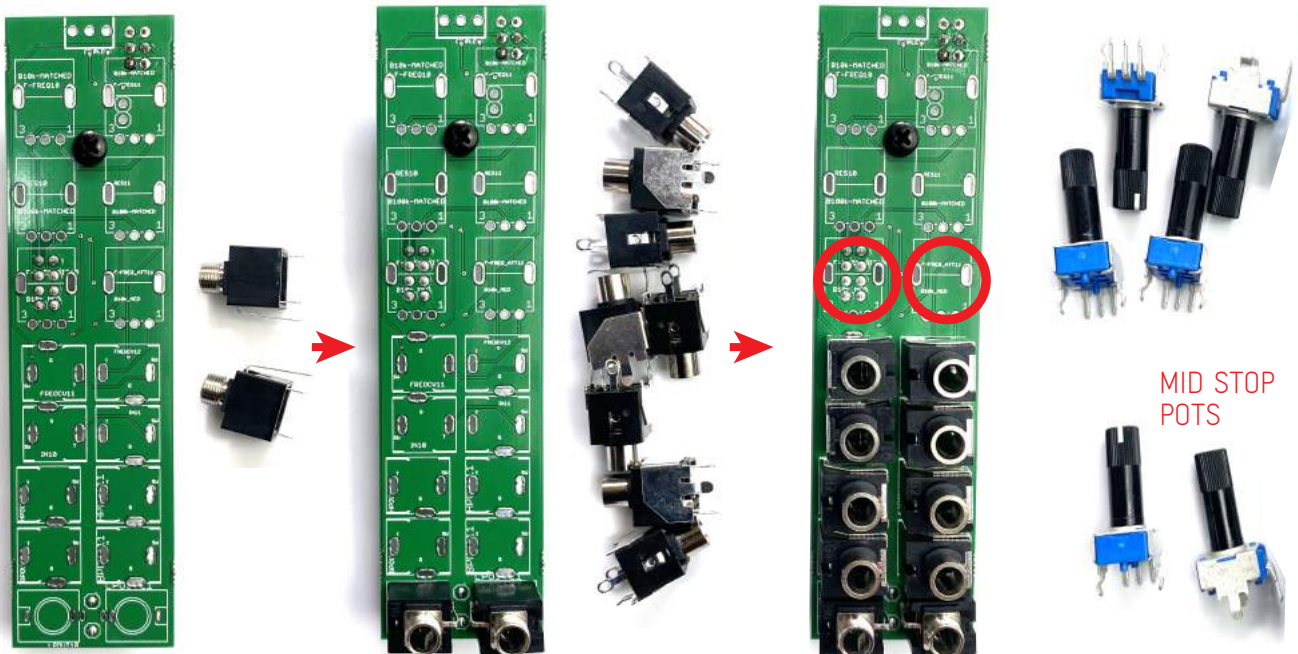


STEP 7:

Next place all parts in the pcb.

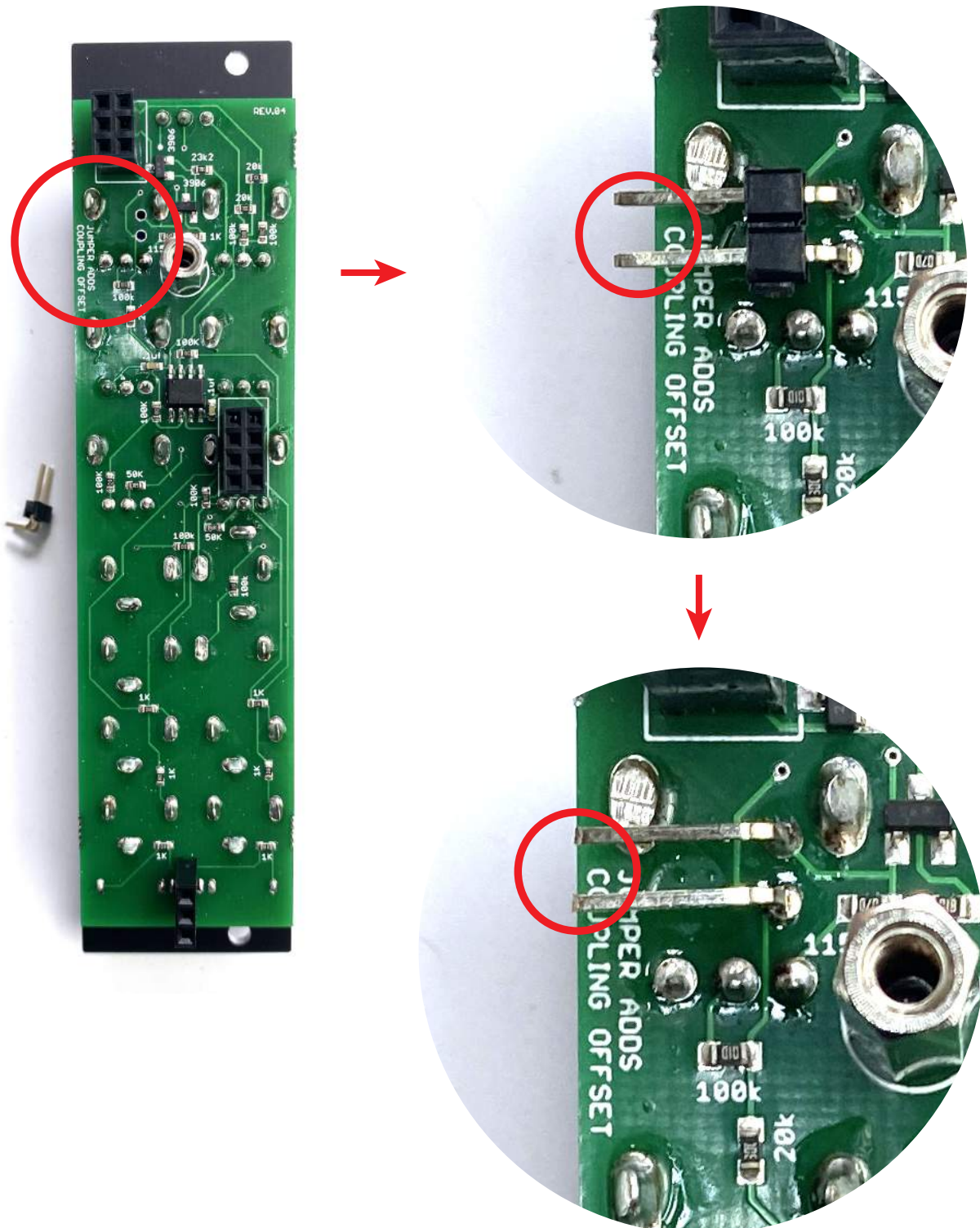
All pots are B103 but notice that 2 of them have the MID STOP indent.

Once all parts are in the pcb proceed to place the front panel, tighten the nuts and then solder all pads.



STEP 8:

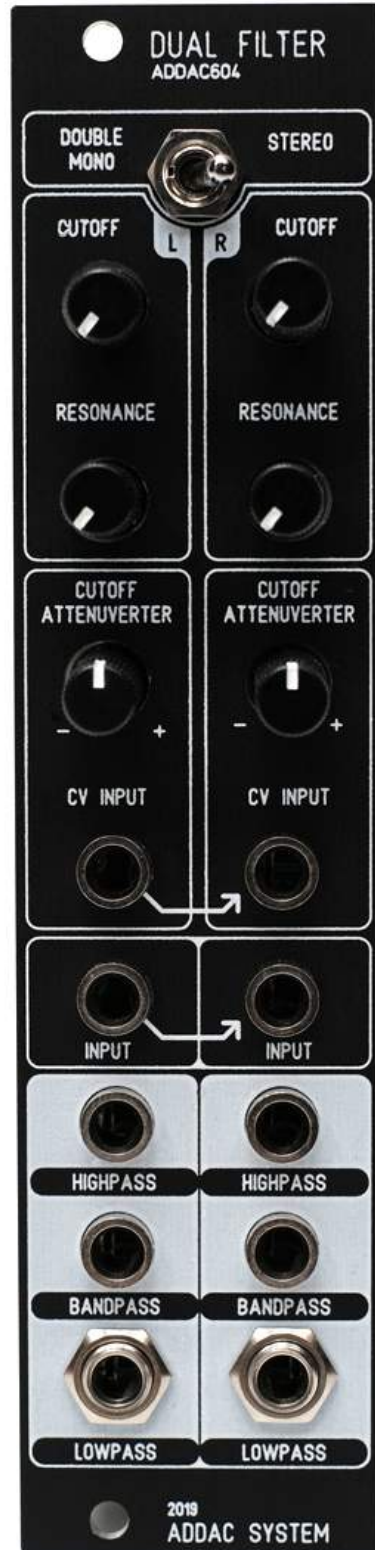
Next solder the jumper pinheader, start by trimming the pot pad with a cutter then solder the pinheader. finish by removing the black plastic and trim the excess pin length



STEP 9:
Place the bottom screw.



Congratulations you're all done!
Happy patching!



For feedback, comments or problems please contact us at:
addac@addacsystem.com