



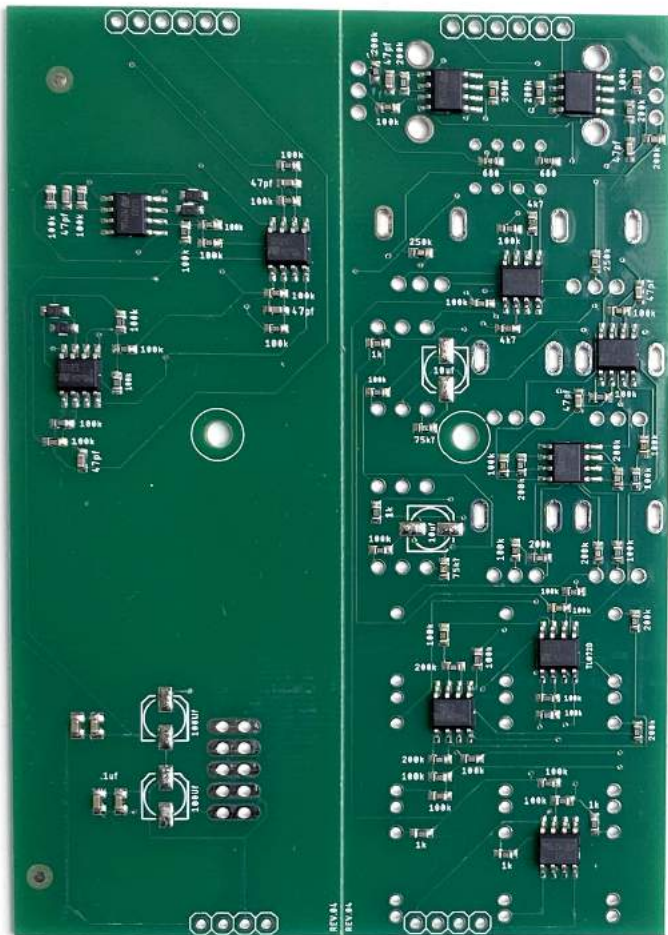
ADDAC216 SUM & DIFFERENCE  
ASSEMBLY GUIDE

Revision.01 March.2020

# ADDAC System

## ADDAC216 Assembly Guide

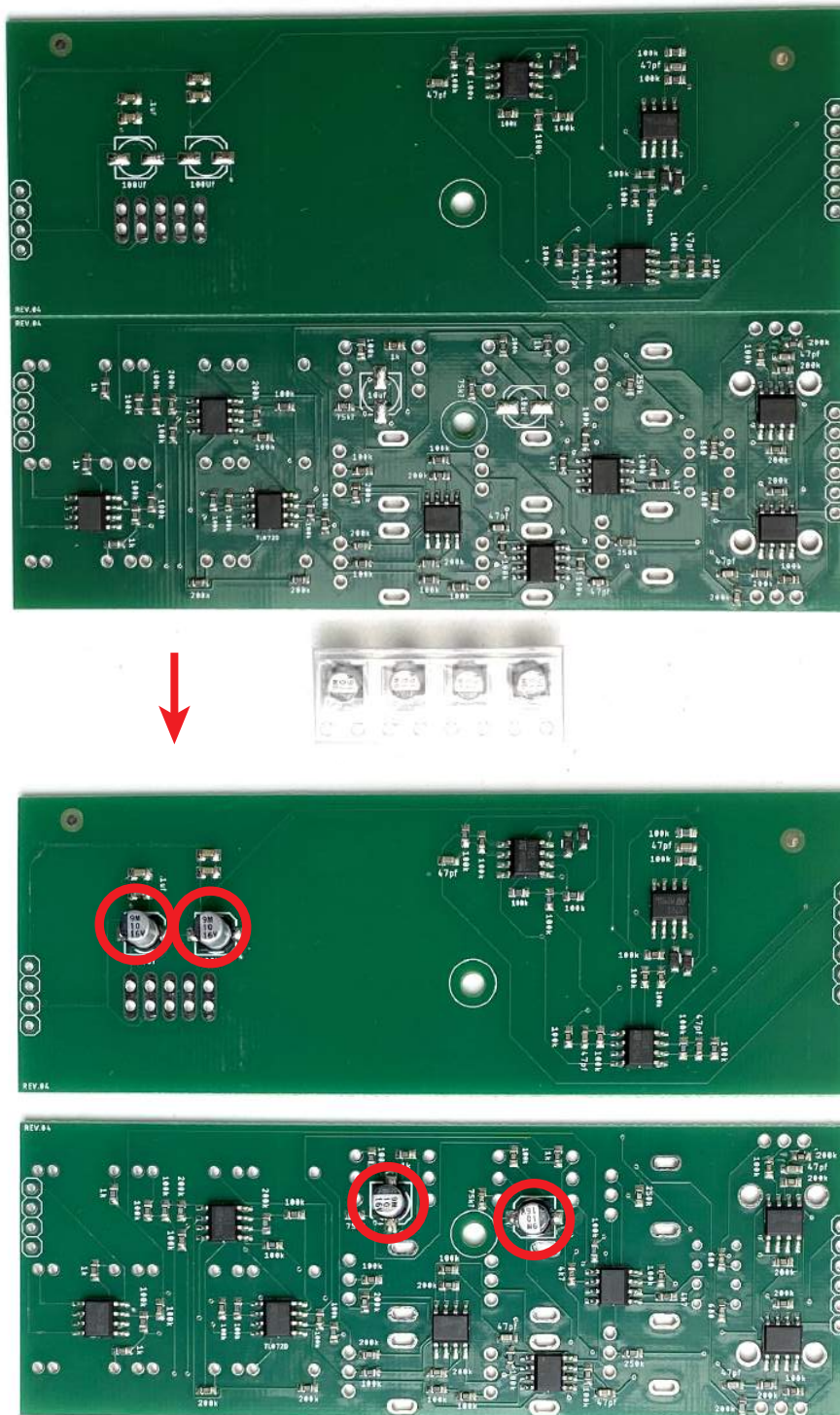
March.2020



STEP 1:

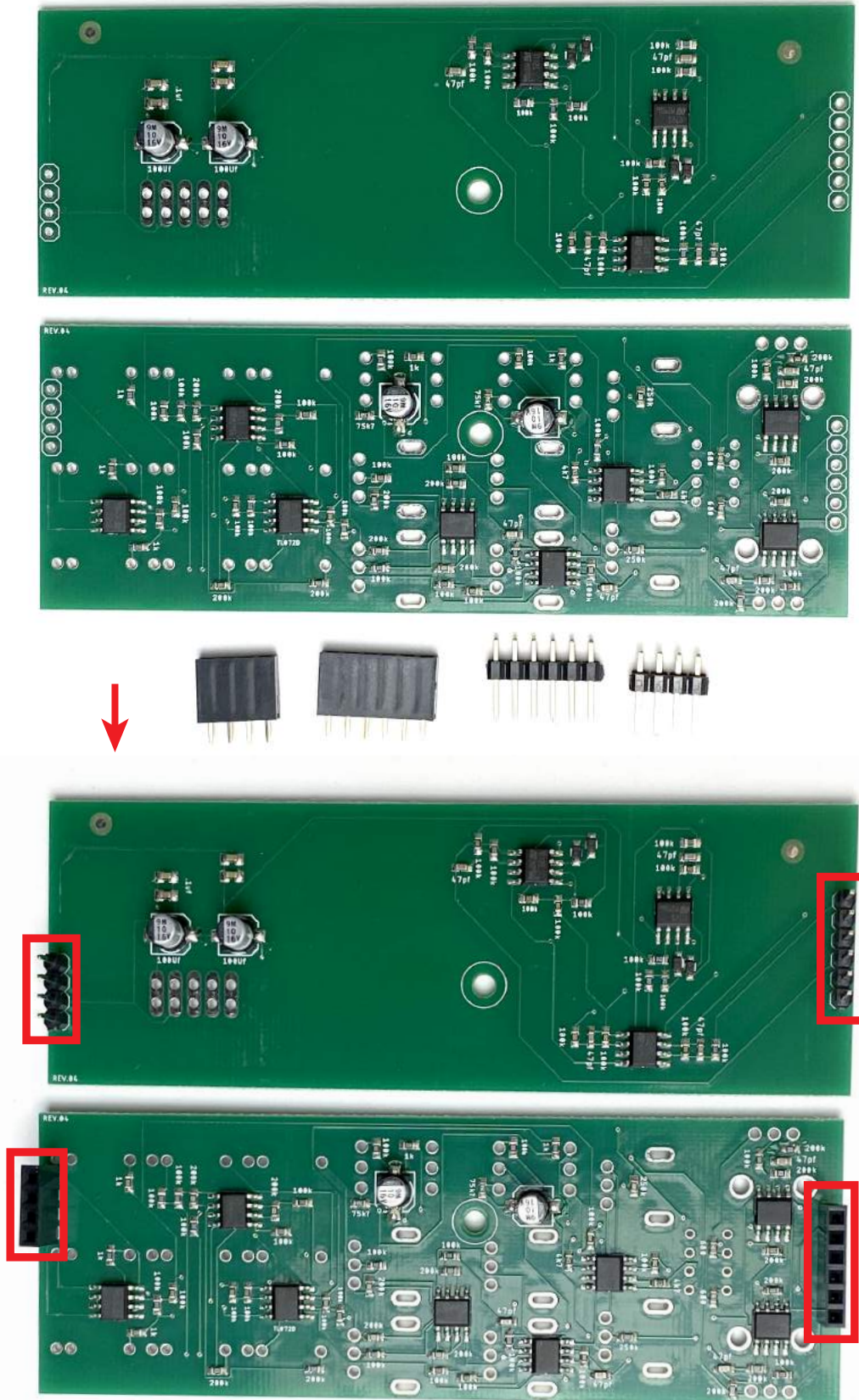
Start by locating all 4 capacitors, notice the orientation printed on the pcb.

Tip: soldering these caps is easy, just place a dab of solder on the pad on your right (left pad if you're left handed) and then, with the help of a tweezer, put the capacitor in place and reflow the pad to reflow the solder while pushing the capacitor down. Then solder the other pad.

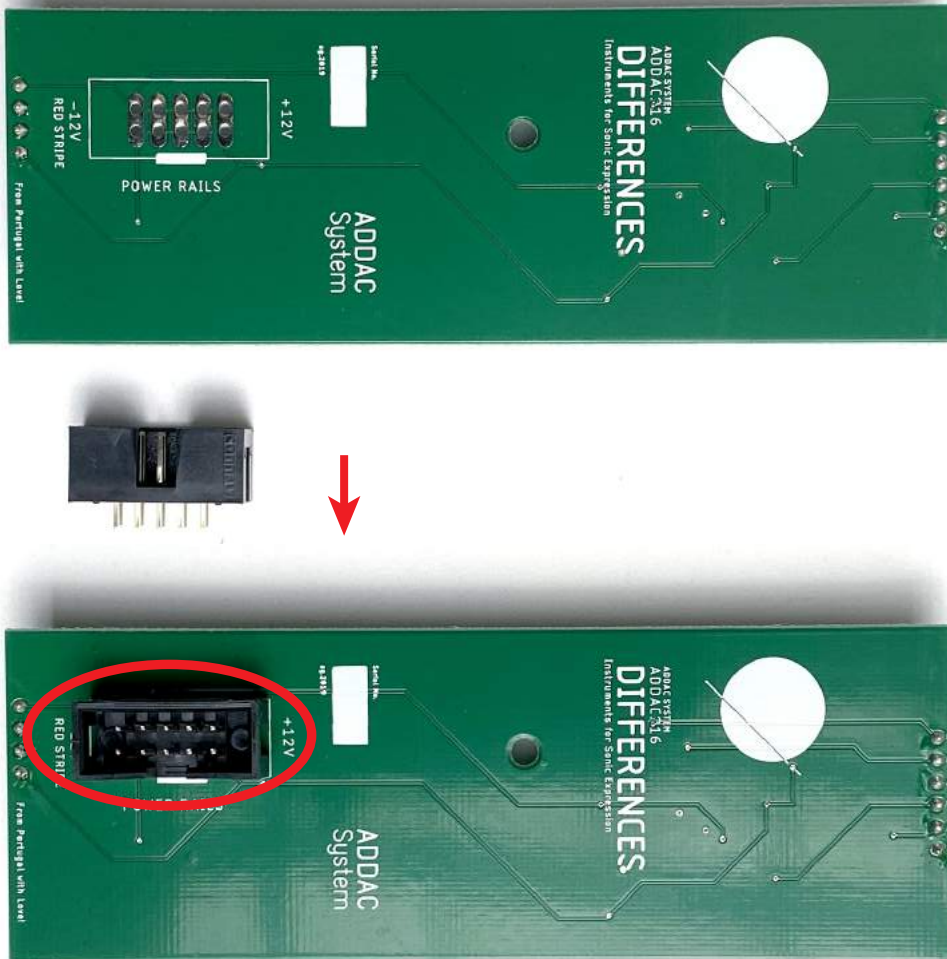


STEP 2:

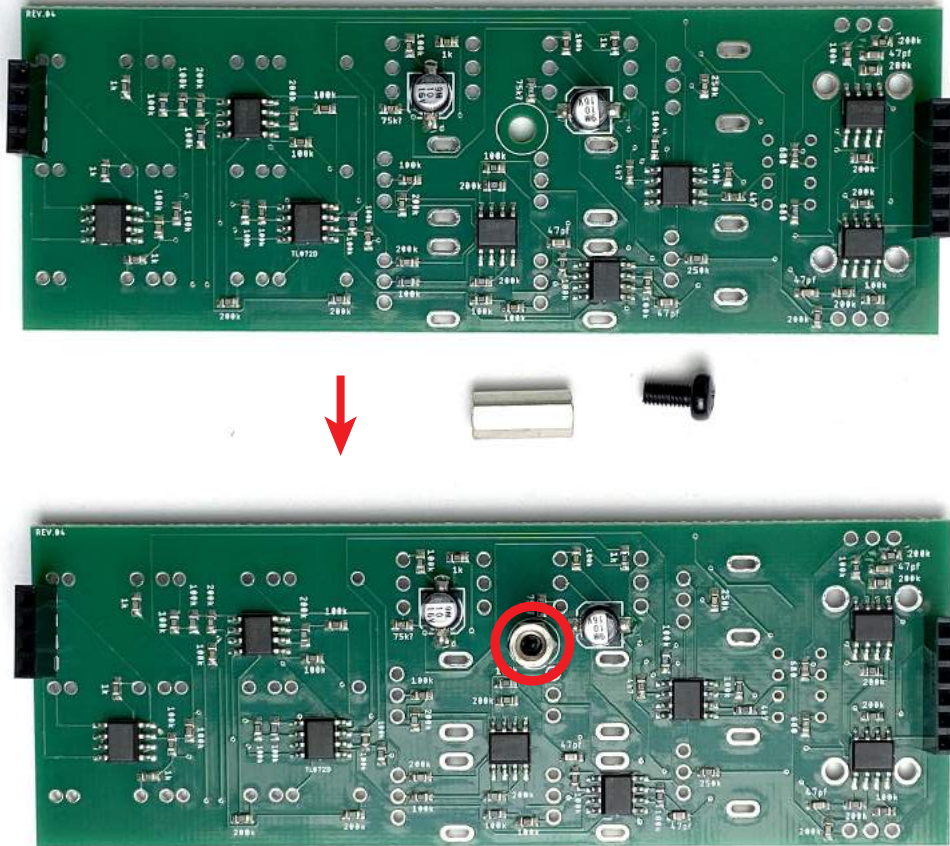
Next carefully break the 2 pcs apart and proceed to locate the male and female pinheaders and solder them like shown below.



STEP 3:  
Next locate and solder the 2x5 boxed pinheader like shown below.

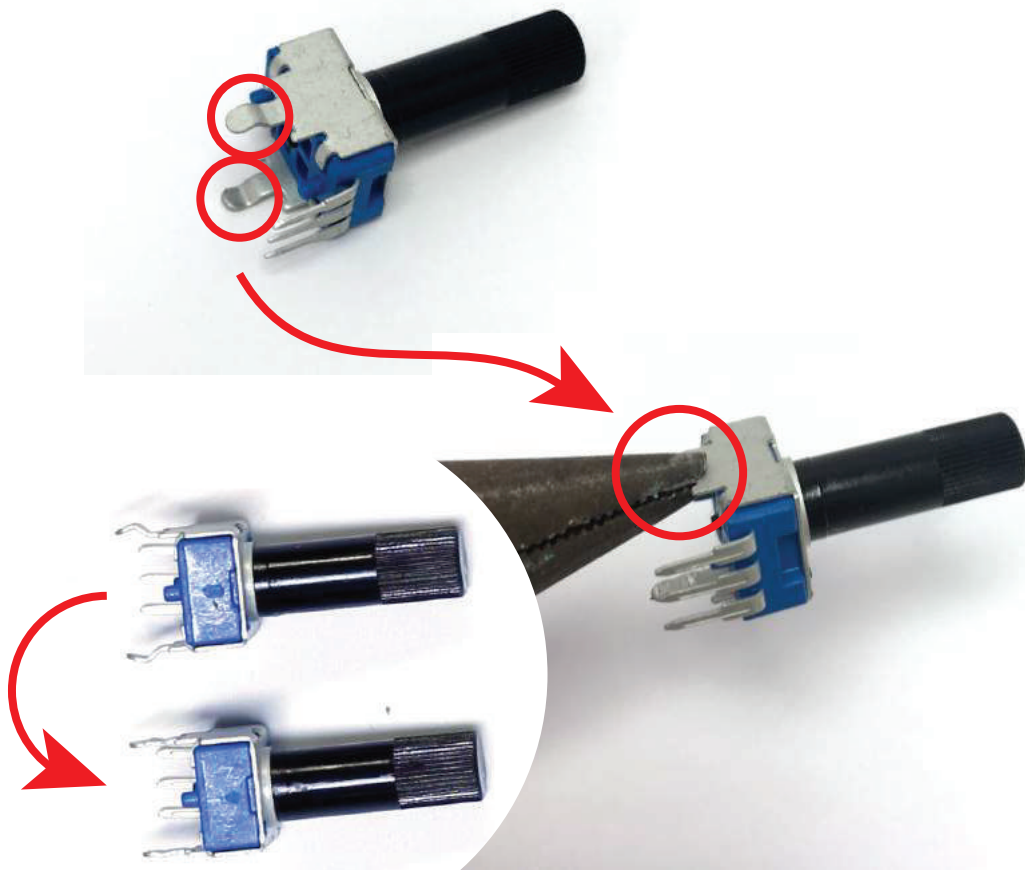


STEP 4:  
Next attach the spacer like shown below.

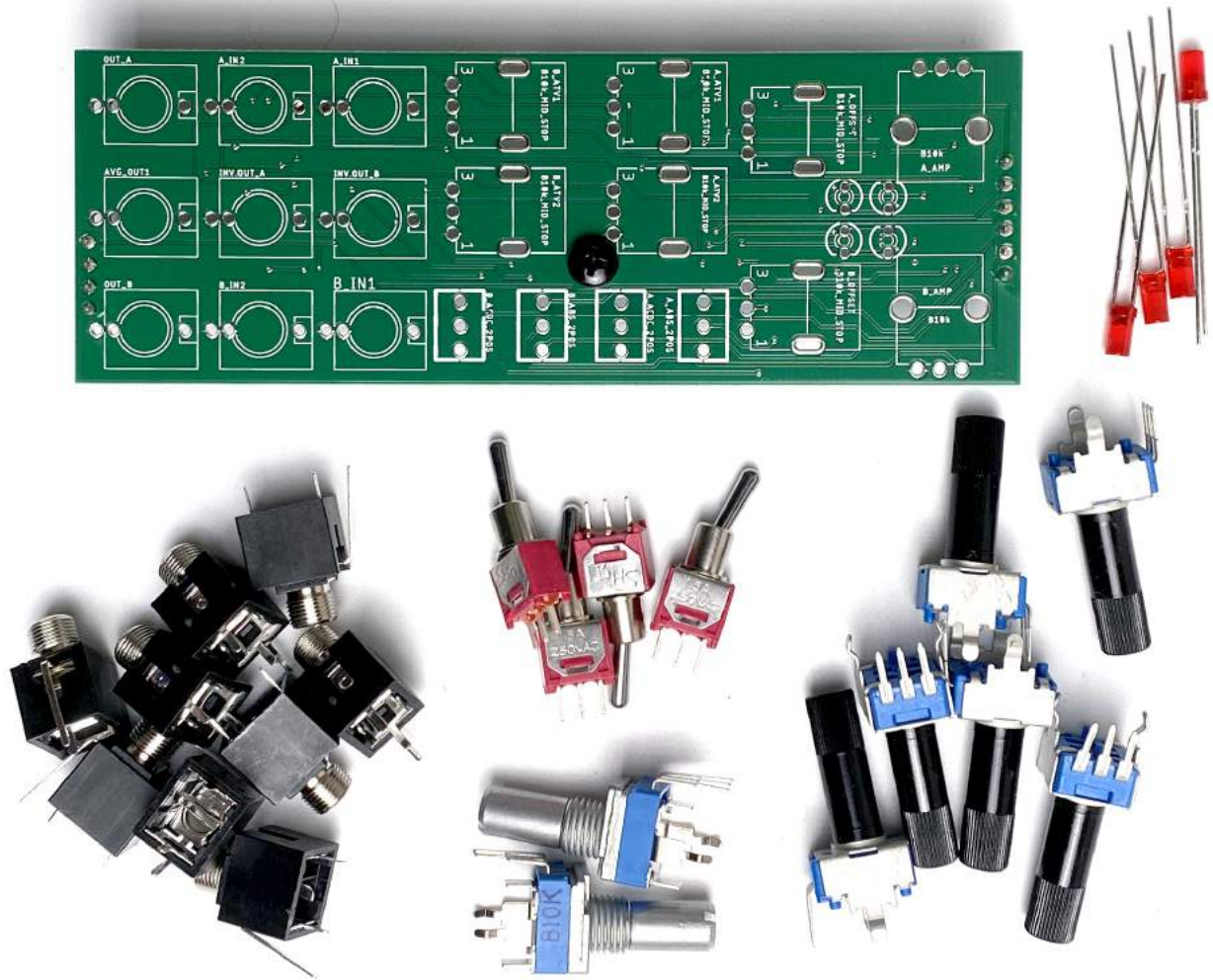


STEP 5:

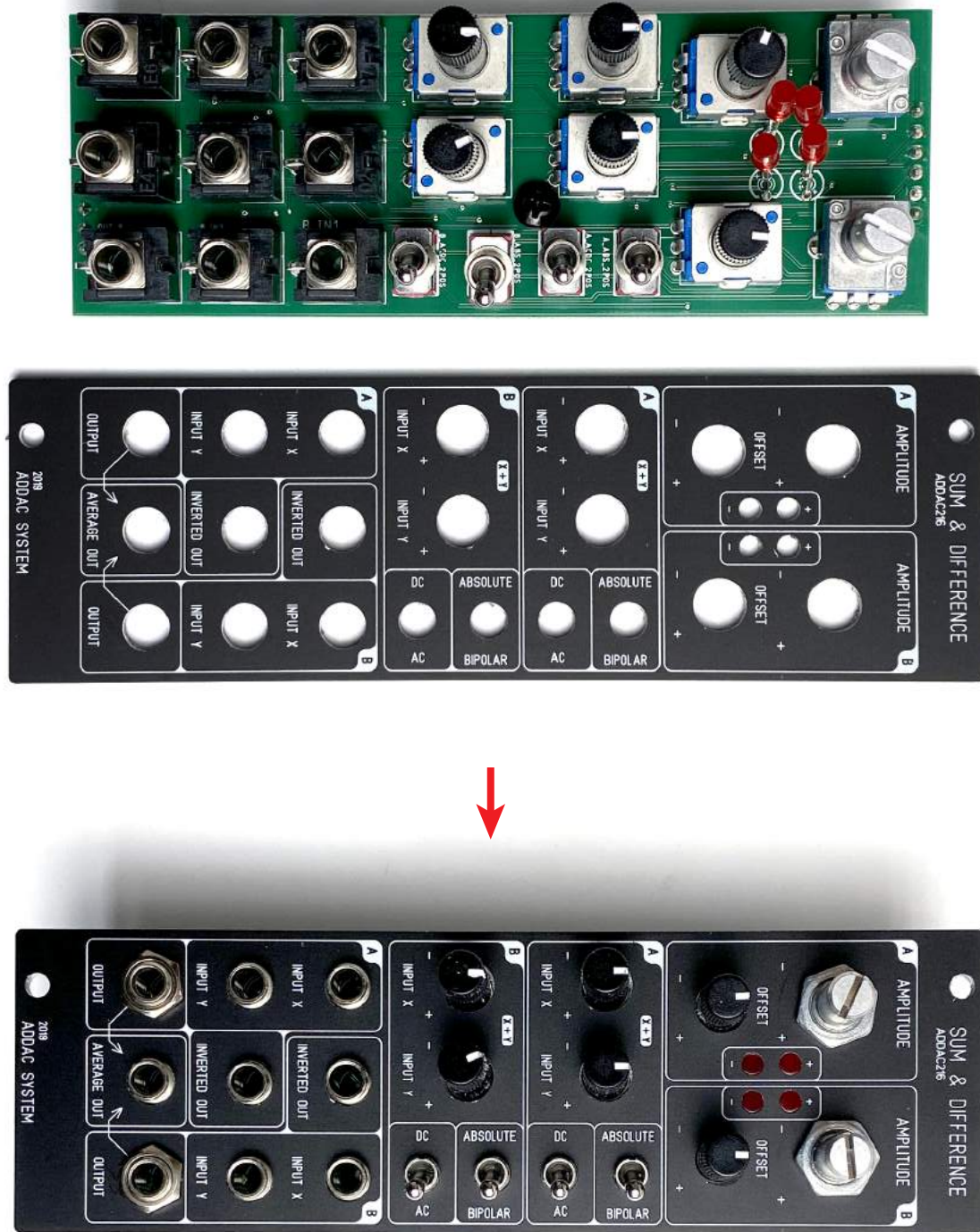
Next locate all trim pots and flatten out their legs with the help of some pliers, like shown below.



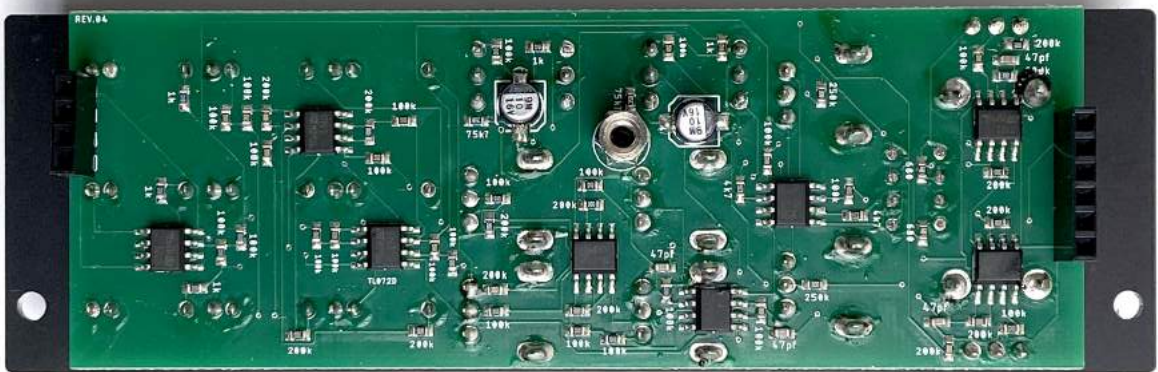
STEP 6:  
Next locate and place all front panel parts.



STEP 7:  
After all parts are in place, fit the frontpanel in and tighten all the nuts.



STEP 8:  
Next proceed by soldering all pads in the back.



STEP 9:  
For the last step attach the back pcb and place the bottom screw.



Place the top knobs and tighten all remaining nuts, then you're done!

Happy Patching!



For feedback, comments or problems please contact us at:  
[addac@addacsystem.com](mailto:addac@addacsystem.com)