



ADDAC System

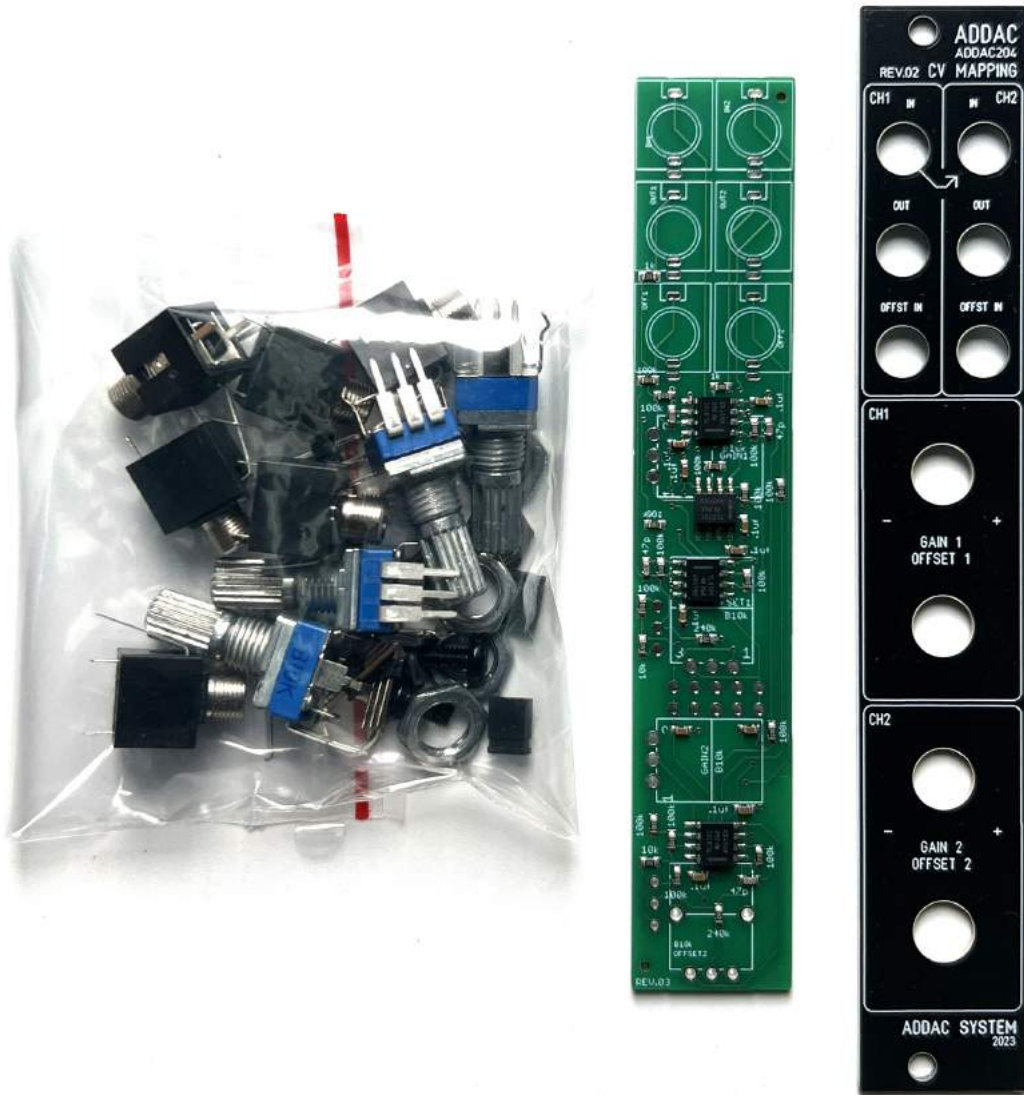
ADDAC203 CV MAPPING REV.02
ASSEMBLY GUIDE

Revision.01 June.2023

ADDAC System

ADDAC203 Assembly Guide

June.2023



ADDAC203 Assembly Guide

STEP 1:
Grab the pcb, and locate the male pinheaders.



STEP 2:
Place the pinheaders on the bottom of the pcb and solder them all



STEP 3:
Next we'll need to prepare the 4 pots before placing them to the front panel. Locate all pots and trim all metal standoffs, beside their legs, with the help of some pliers, like shown below.



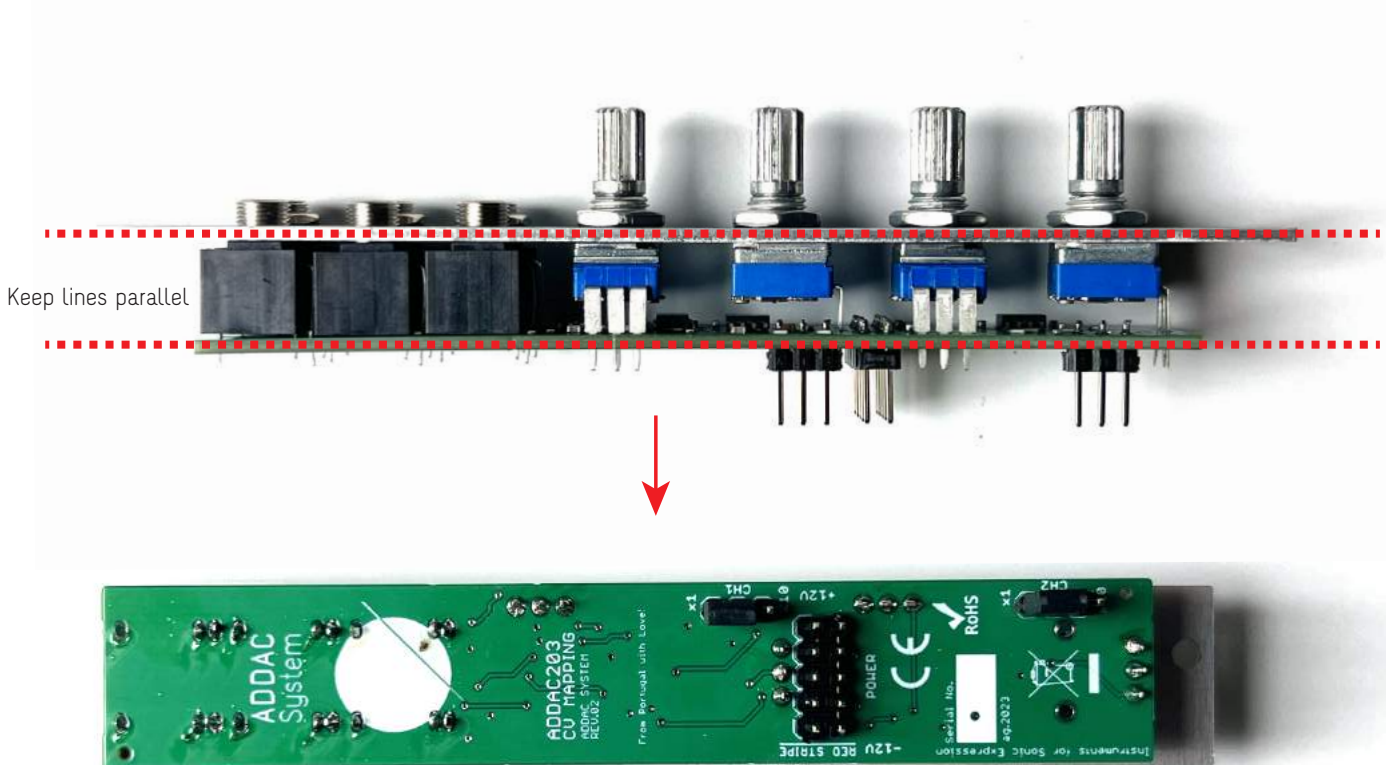
STEP 4:
Place all jacks and pots on the pcb, do not solder them yet.



STEP 5:
Place the frontpanel and tighten all nuts



STEP 6:
Adjust the height of the pcb keeping it parallel to the front panel and proceed to solder all parts.



Finish it by placing the knobs and you've finished the assembly process!

Happy Patching!



For feedback, comments or problems please contact us at:
addac@addacsystem.com

ADDAC203 REV.02 ASSEMBLY GUIDE

Revision.01 June.2023