



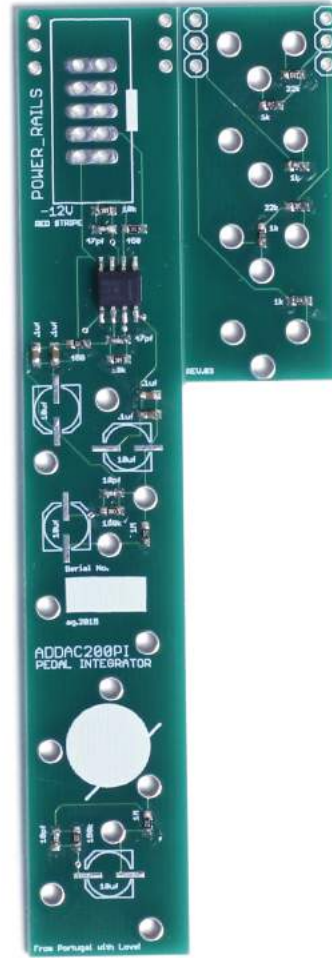
ADDAC200PI Pedal Integrator
ASSEMBLY GUIDE

Revision.01 July.2019

ADDAC System

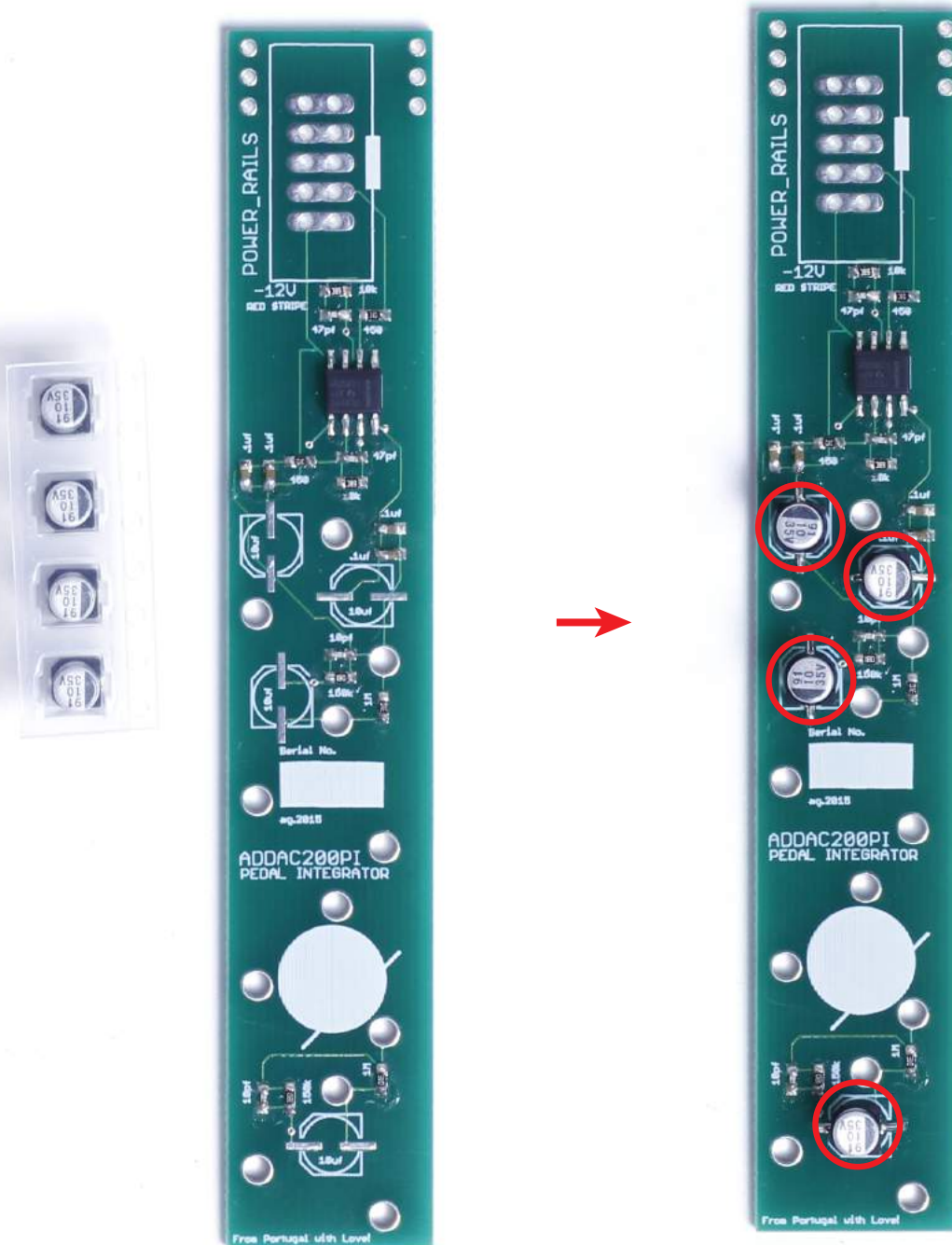
ADDAC200PI Assembly Guide

July.2019



ADDAC200PI Assembly Guide

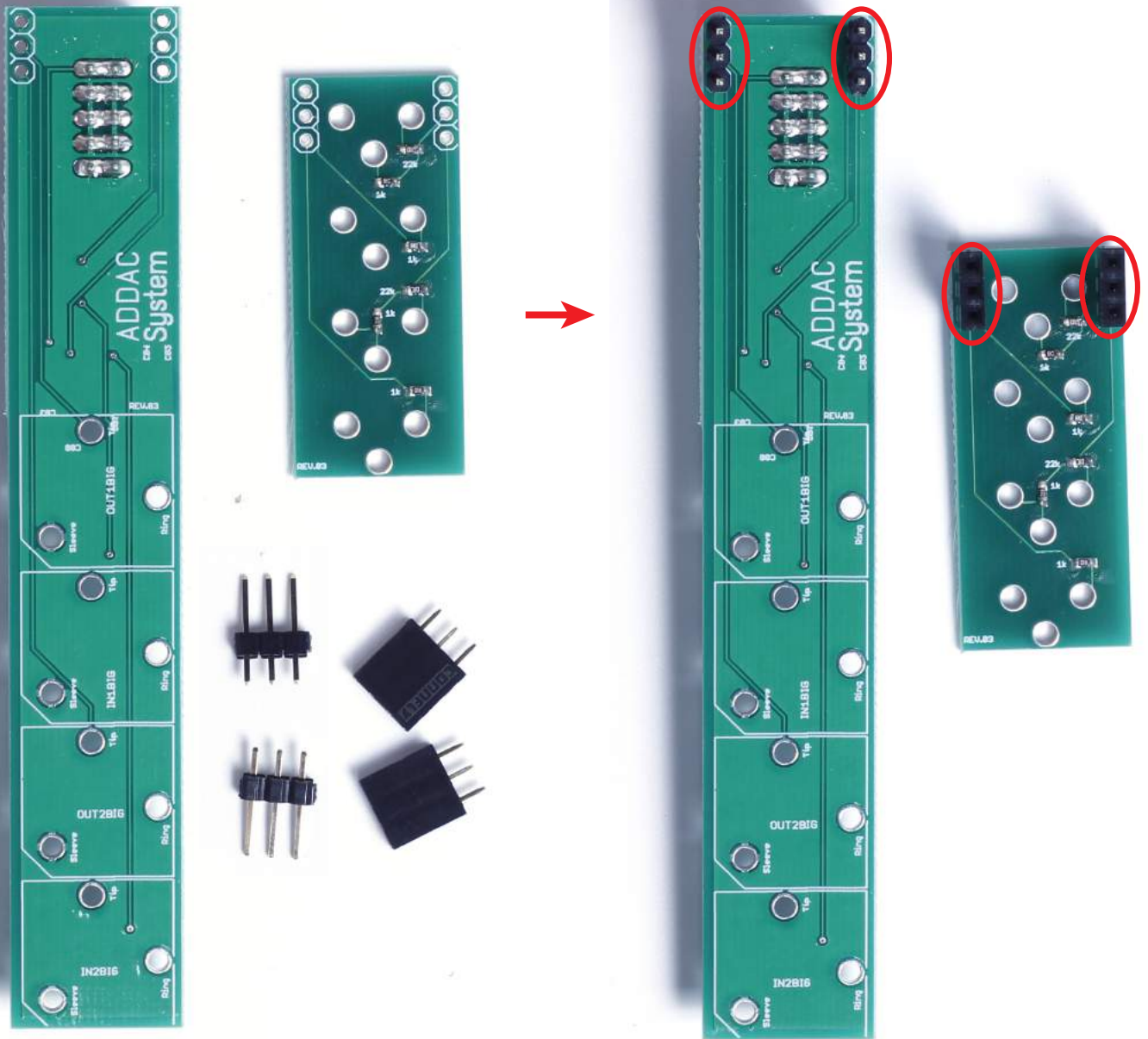
STEP 1:
Locate and solder the 4 capacitors like shown below.



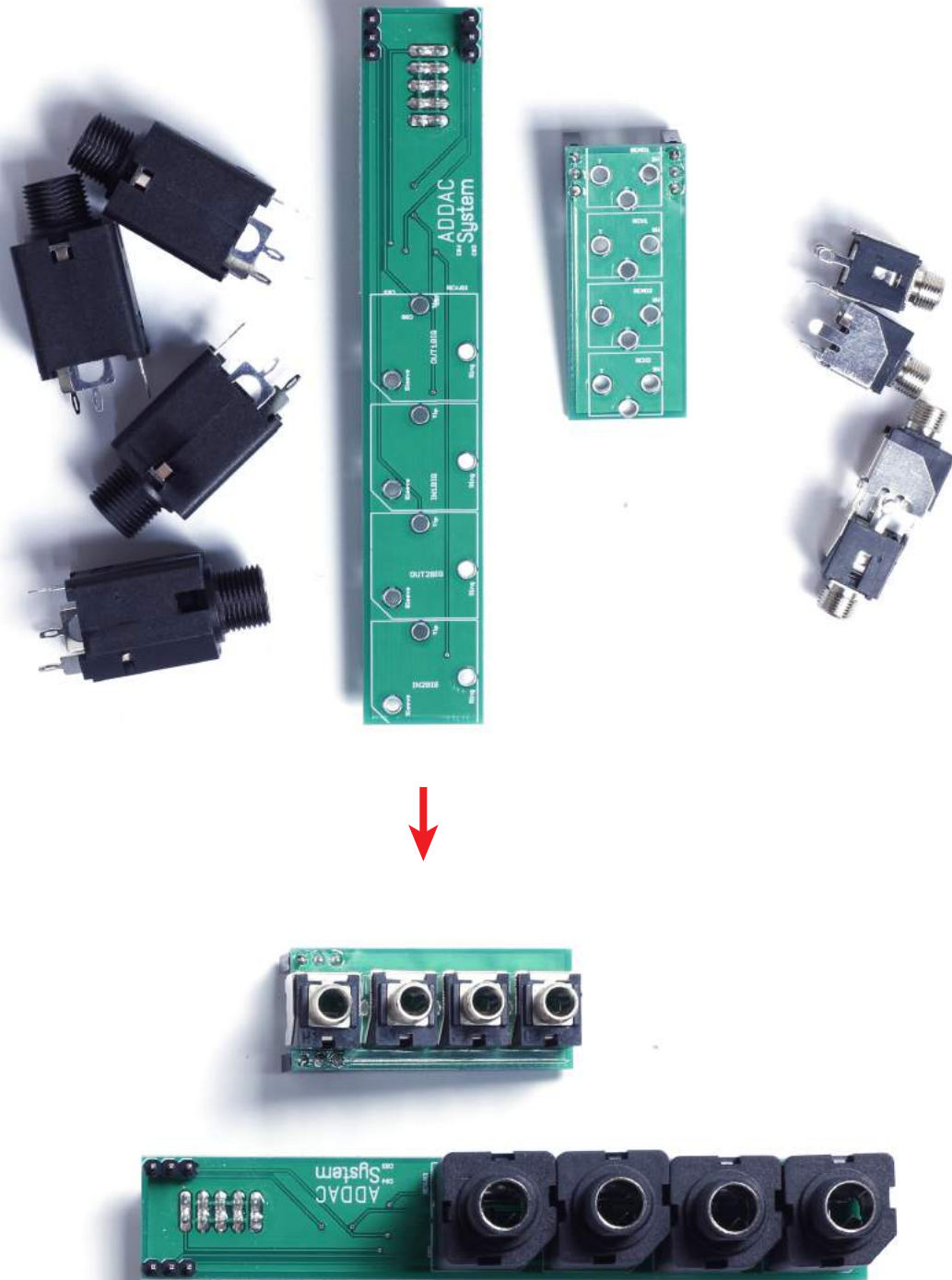
STEP 3:
Locate and solder the 2x5 boxed pinheader like shown below.



STEP 6:
Locate the remaining pinheaders, place and solder them like shown below.

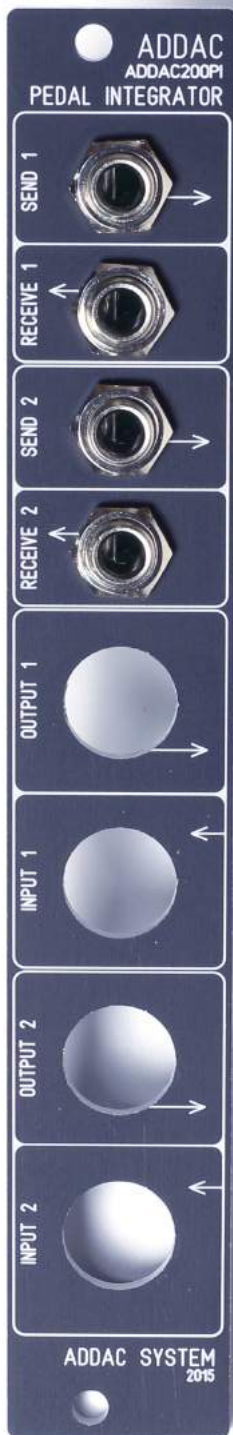


STEP 8:
Locate all jacks and place them like shown below.

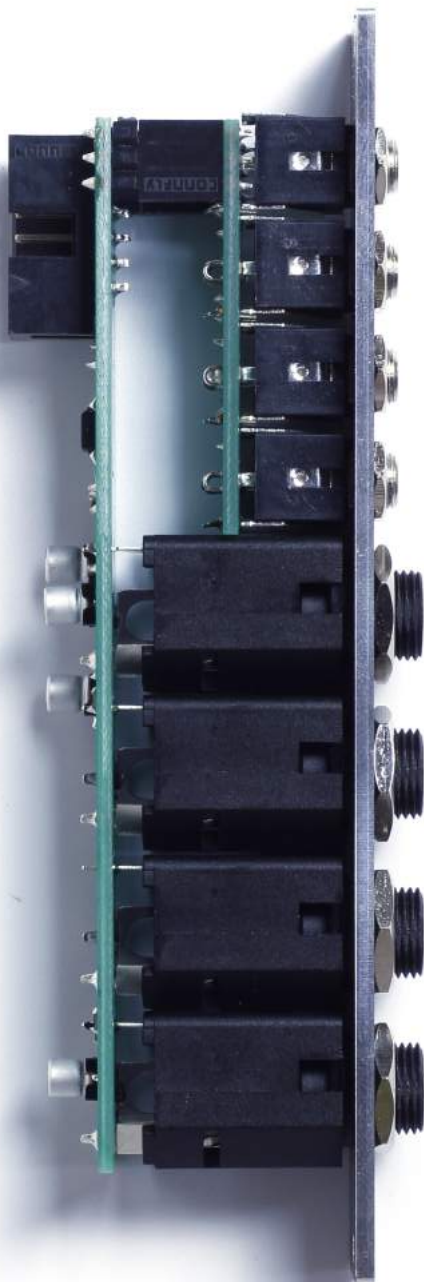


STEP 11:

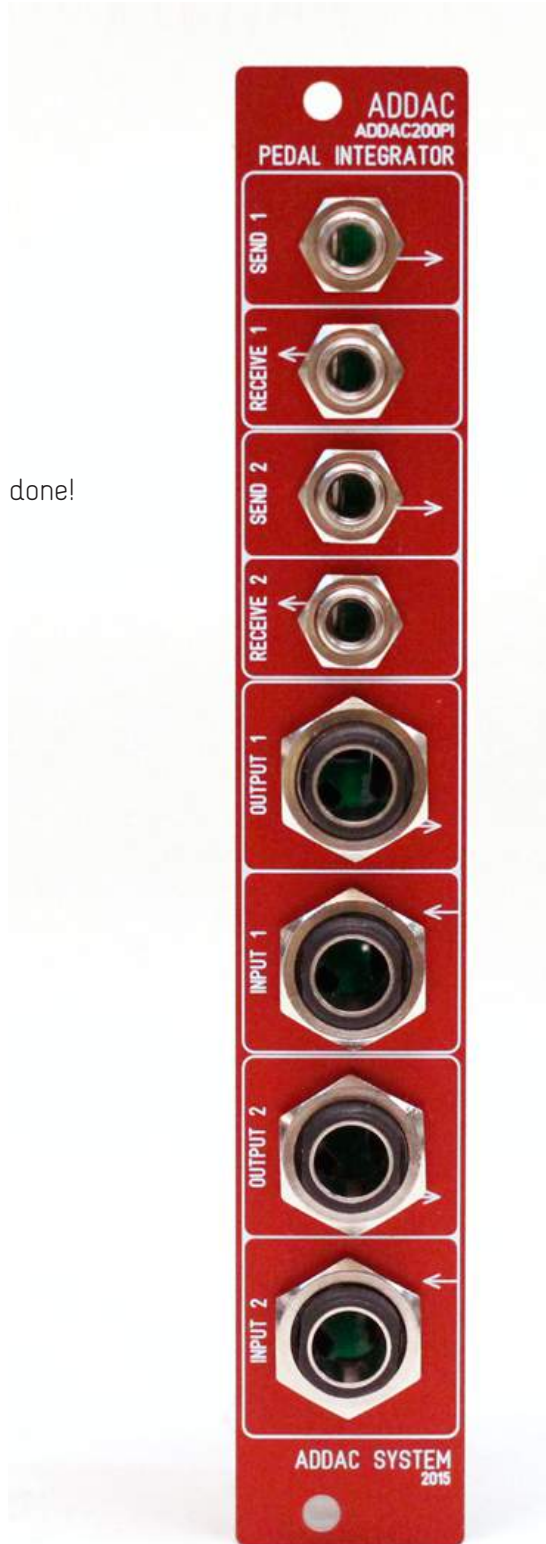
Place the smaller pcb on the panel, tighten the nuts and solder their pads.



STEP 13:
Attach the bigger pcb tighten the nuts and solder the last pads.



Congratulations you're done!
Happy Patching!!



For feedback, comments or problems please contact us at:
addac@addacsystem.com