



# ADDAC System

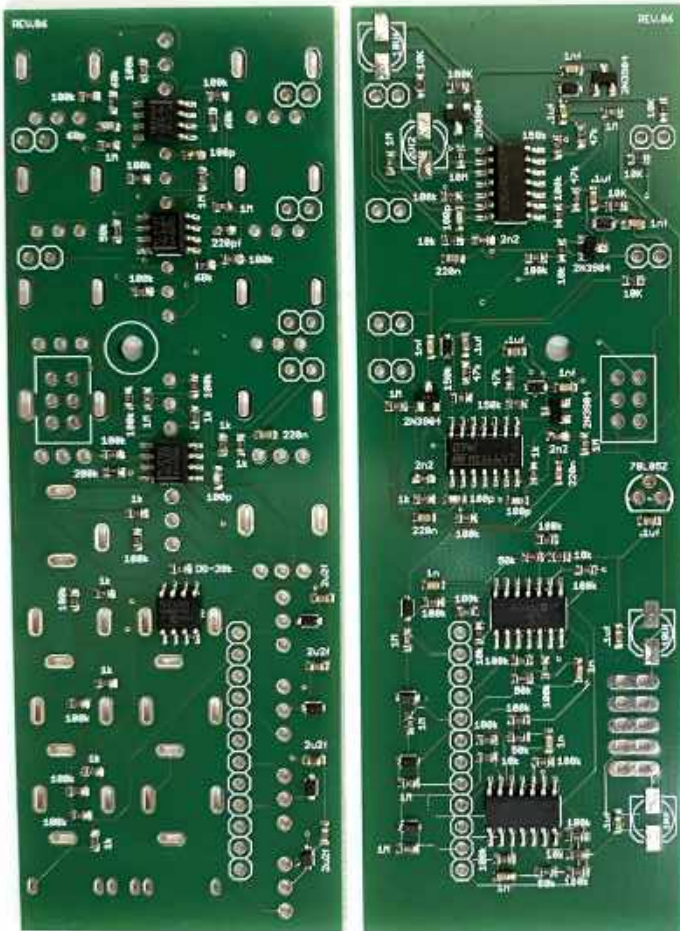
ADDAC106 T-NOISEWORKS  
ASSEMBLY GUIDE

Revision.01 July,2020

# ADDAC System

## ADDAC106 Assembly Guide

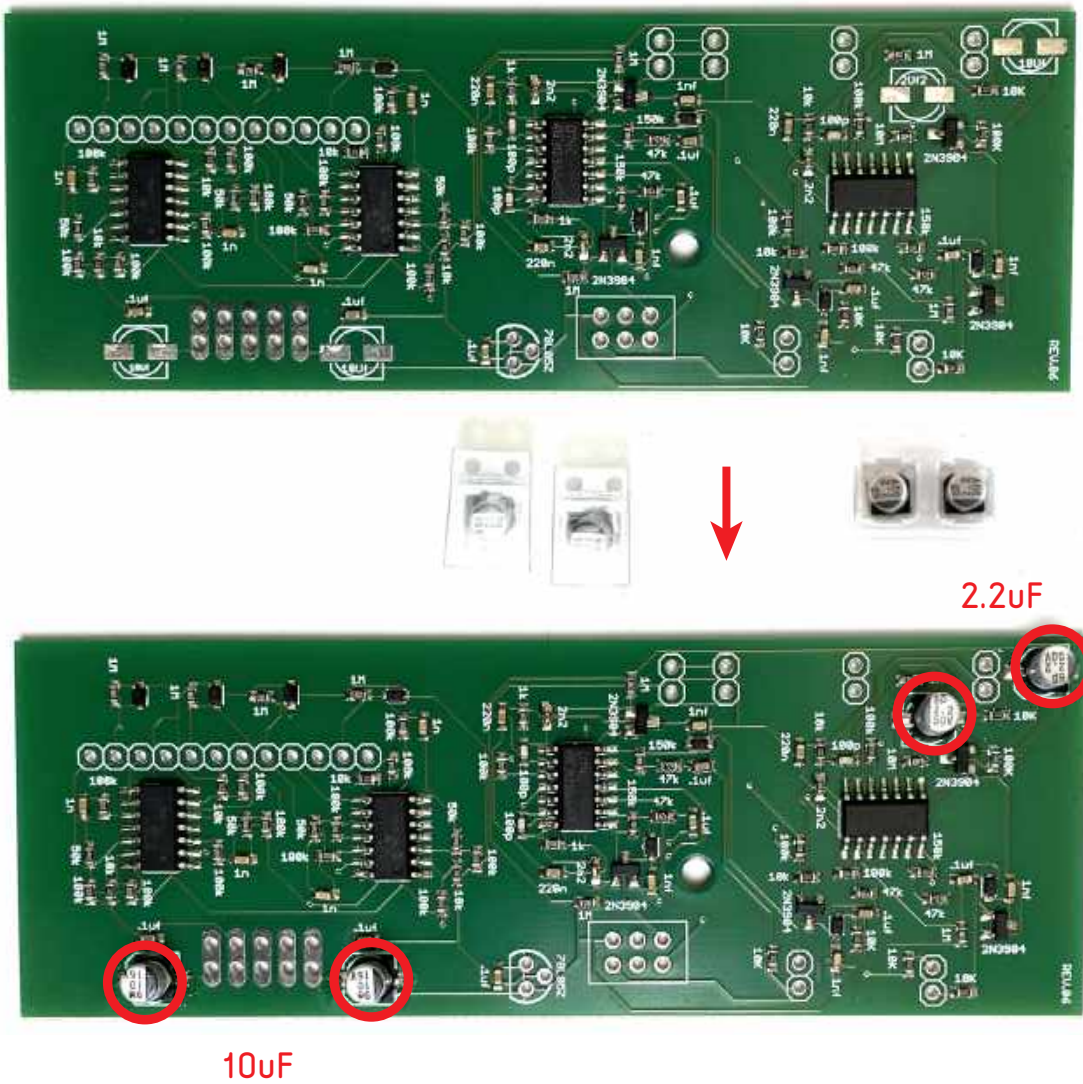
March.2020



STEP 1:

Next carefully break the 2 pcbs apart and proceed locating all 4 capacitors, notice the values and orientation printed on the pcb.

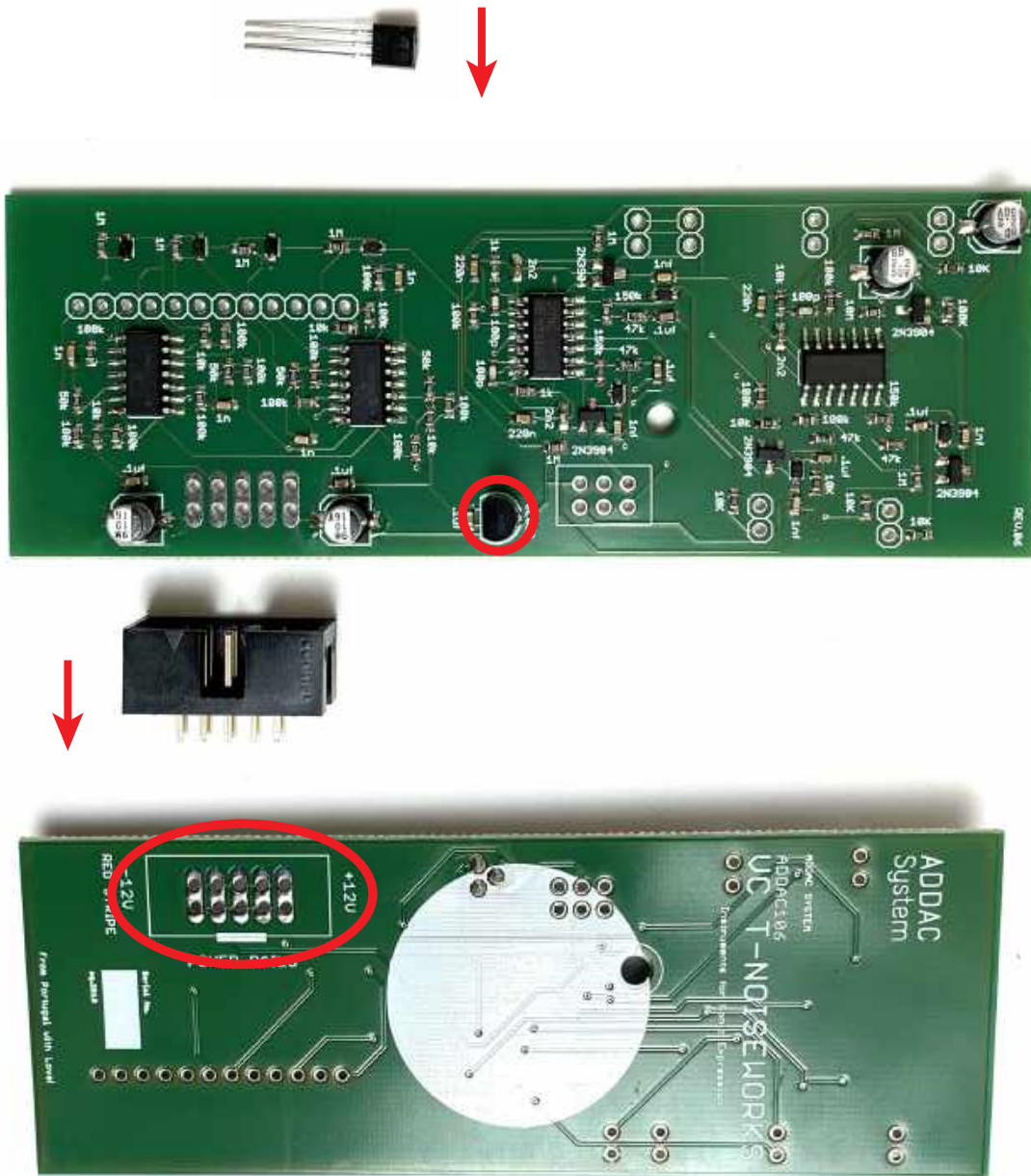
Tip: soldering these caps is easy, just place a dab of solder on the pad on your right (left pad if you're left handed) and then, with the help of a tweezer, put the capacitor in place and reflow the solder while pushing the capacitor down. Then solder the other pad.



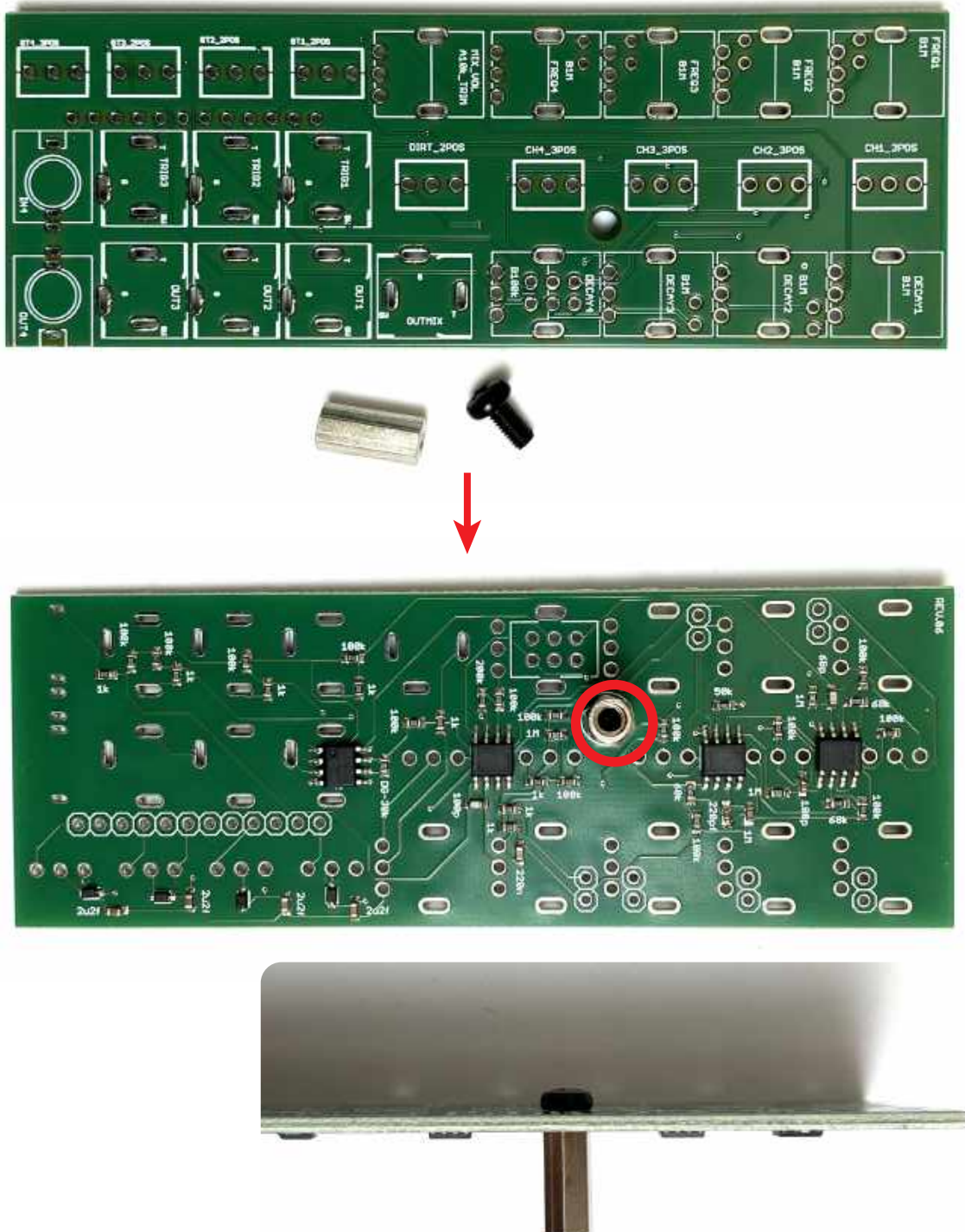
STEP 2:

Next place and solder the 78L05 voltage regulator, notice the orientation printed on the pcb.

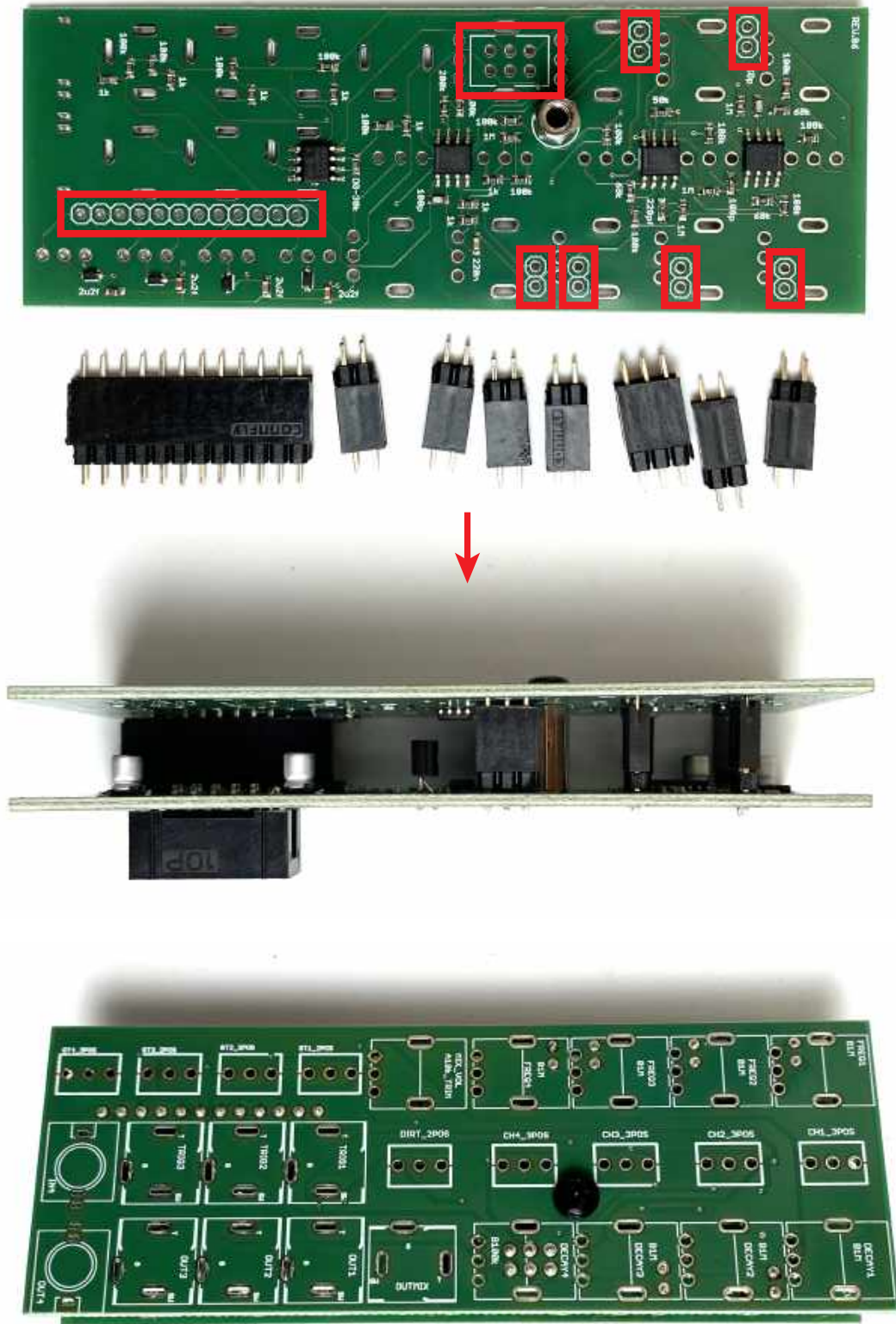
Then proceed to place and solder the IDC connector, also notice the orientation printed on the pcb.



STEP 3:  
Next place the spacer like shown below.

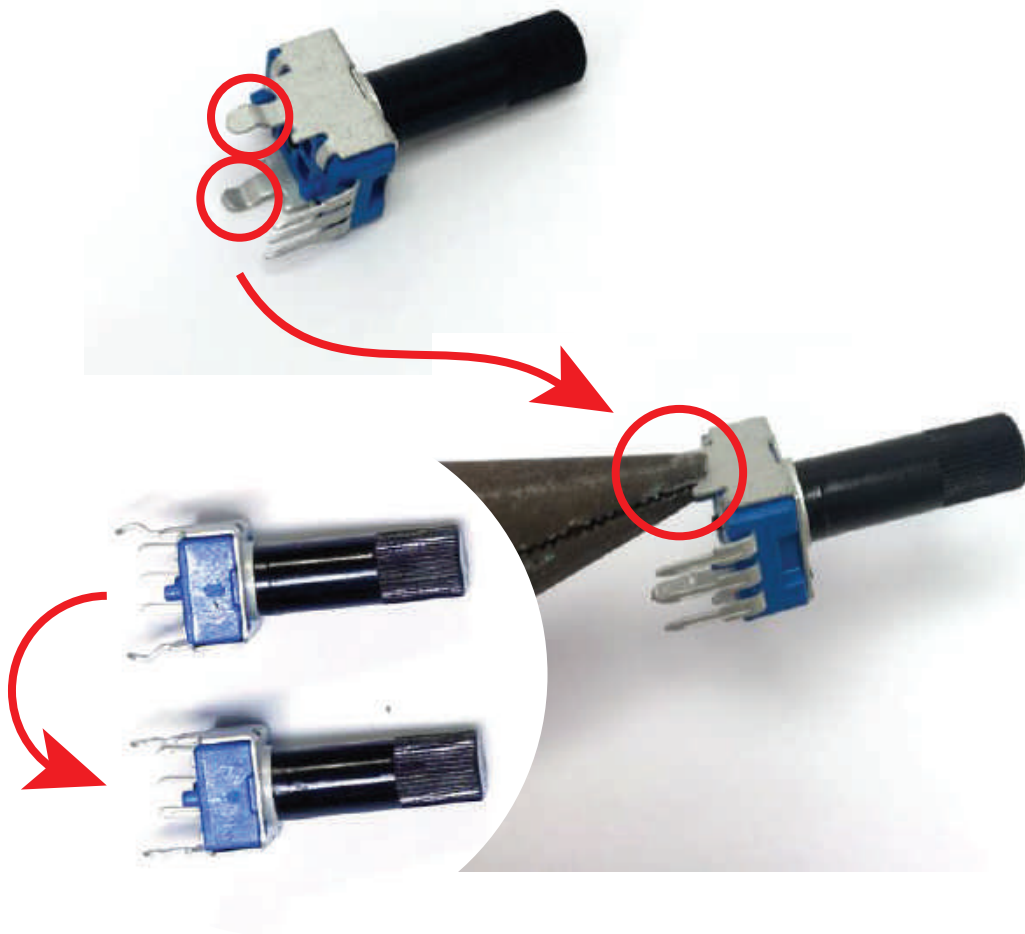


STEP 4:  
Next place and solder all pinheaders like shown below.



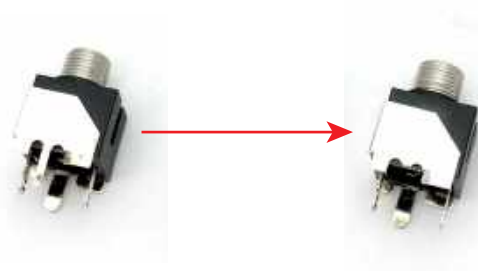
STEP 5:

Next we'll need to prepare some parts before adding them to the front panel.  
Locate all trim pots and flatten out their legs with the help of some pliers, like shown below.



STEP 6:

Locate the jacks and cut the smallest legs like shown below.

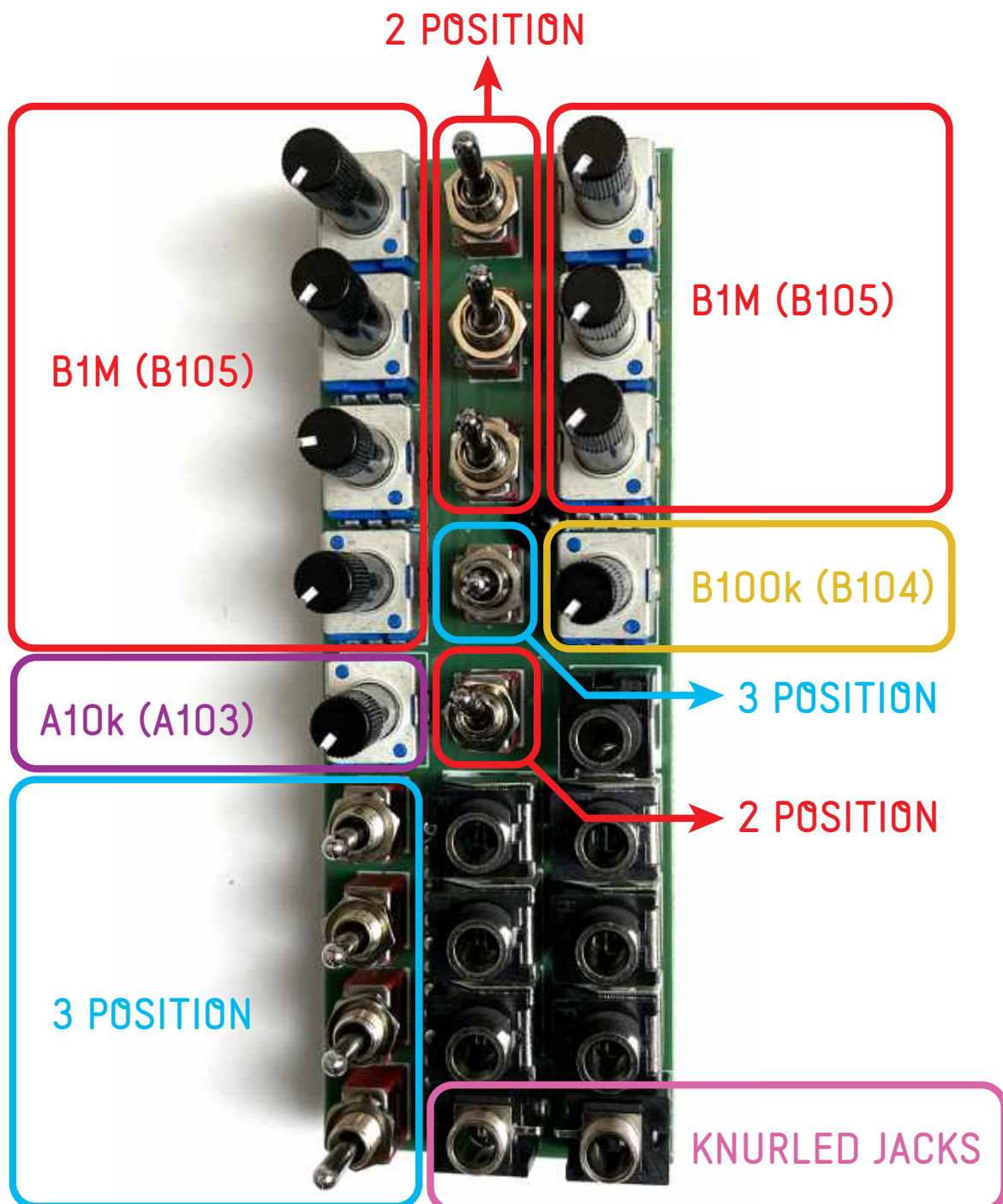


STEP 7:

Next locate and place all front panel parts.

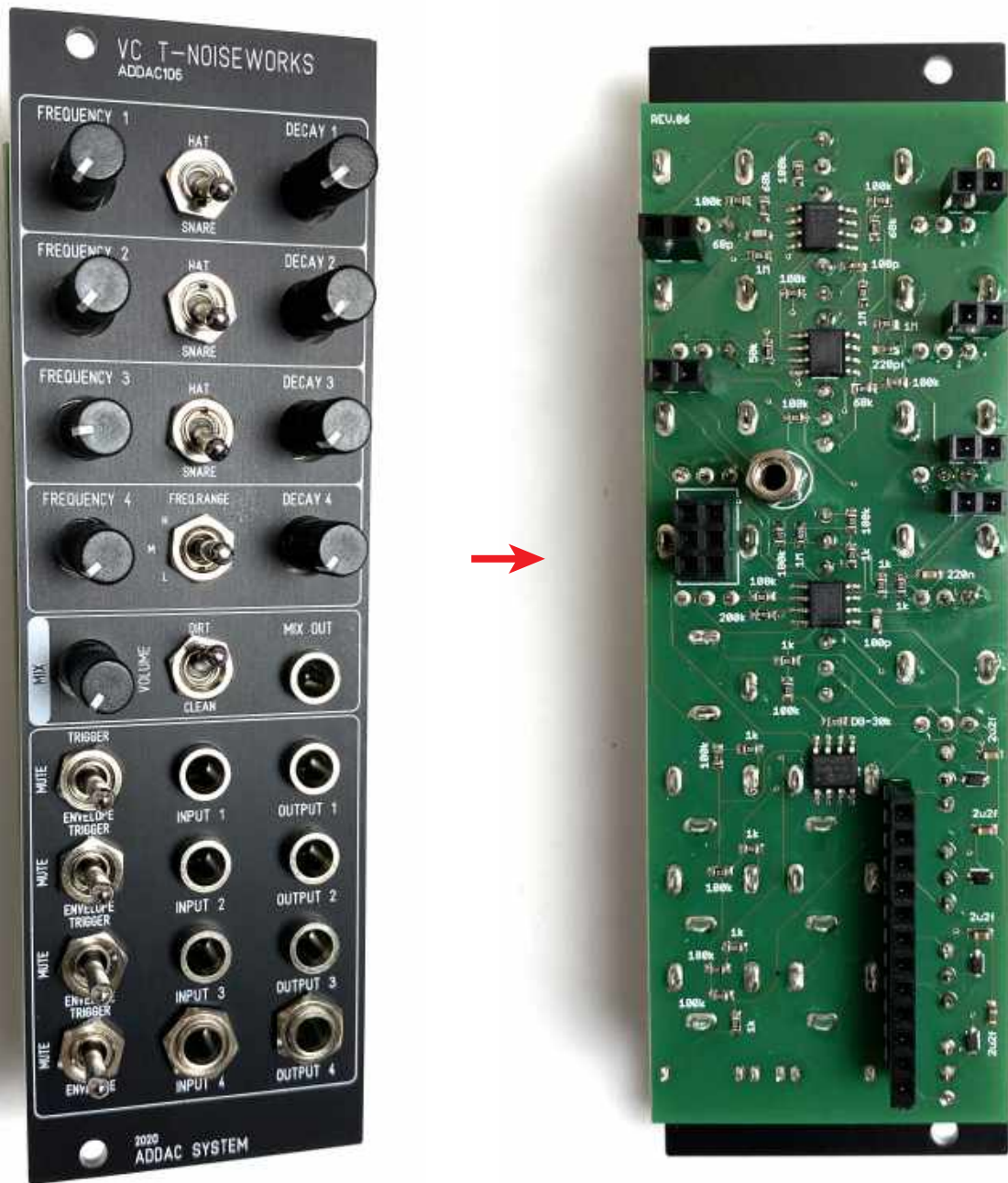
**Notice the values of all Pots and the 2 or 3 position switches locations.**

All switches should have a nut on, raised approx. 1mm from the lowest position.

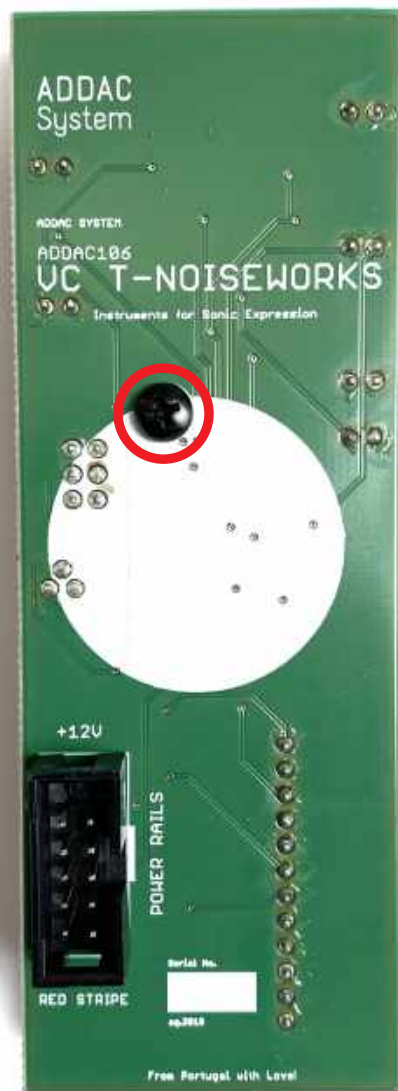




STEP 8:  
After all parts are in place, fit the frontpanel in and tighten all the nuts.  
Proceed by soldering all the pads in the back.



STEP 9:  
For the last step attach the back pcb and place the bottom screw.



Congratulations, you're done!  
Happy Patching!



For feedback, comments or problems please contact us at:  
[addac@addacsystem.com](mailto:addac@addacsystem.com)